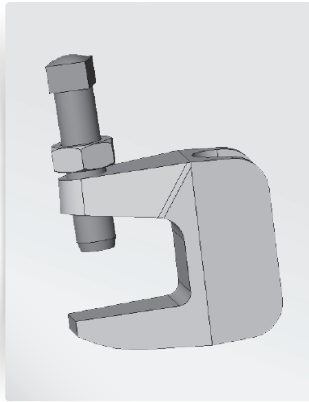


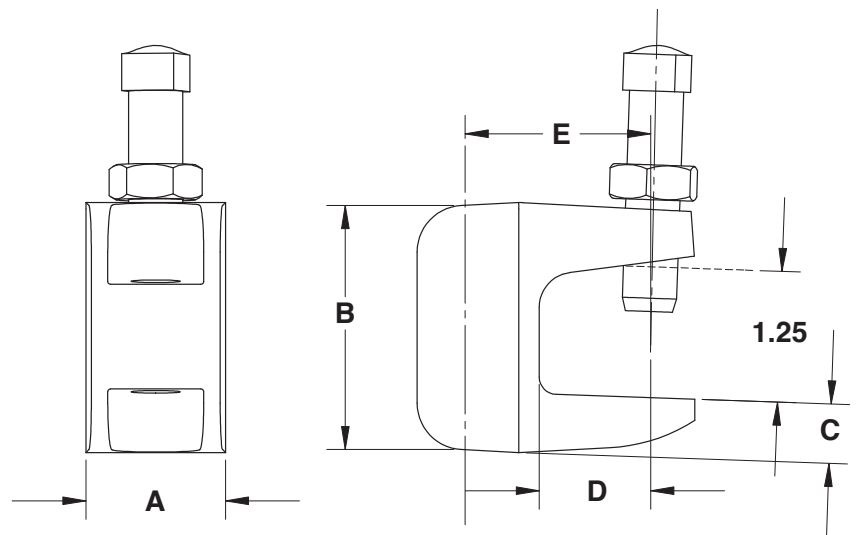
WIDE MOUTH BEAM CLAMPS



PART #	MODEL #	DESCRIPTION	INNER CARTON QTY	MASTER CARTON QTY	SELECT MODEL BELOW
PLAIN DUCTILE IRON WIDE MOUTH BEAM CLAMP					
H33103	HMRBCWM38B	3/8" Plain 1-1/4" Wide Mouth Beam Clamp	1	50	<input type="checkbox"/>
H33104	HMRBCWM12B	1/2" Plain 1-1/4" Wide Mouth Beam Clamp	1	50	<input type="checkbox"/>



- Complies with A-A-1192A (Type 19) and MSS SP-58 (Type 19)
- UL Listed applies to 3/8" & 1/2"
- FM Approved applies to 3/8" & 1/2"



WIDE MOUTH BEAM CLAMPS | Dimensions [IN.]

ROD SIZE	WEIGHT PER 100 PIECES	MAX REC. LOAD	A	B	C	D	E
3/8"	28	350#	.88	2.00	.31	.75	1.00
1/2"	34	470#	.88	2.00	.31	.75	1.00

SEE MSS SP-69 FOR PROPER SET SCREW RECOMMENDATIONS

FINISH: Plain Steel

MATERIAL: Ductile Iron

FEATURES: Complies with A-A-1192A (Type 19) and MSS SP-58 (Type 19).

JOB NAME:

JOB LOCATION:

CONTRACTOR:

DATE:

ITEM TAG:

ENGINEER APPROVAL:

DATE:

PART NUMBER: