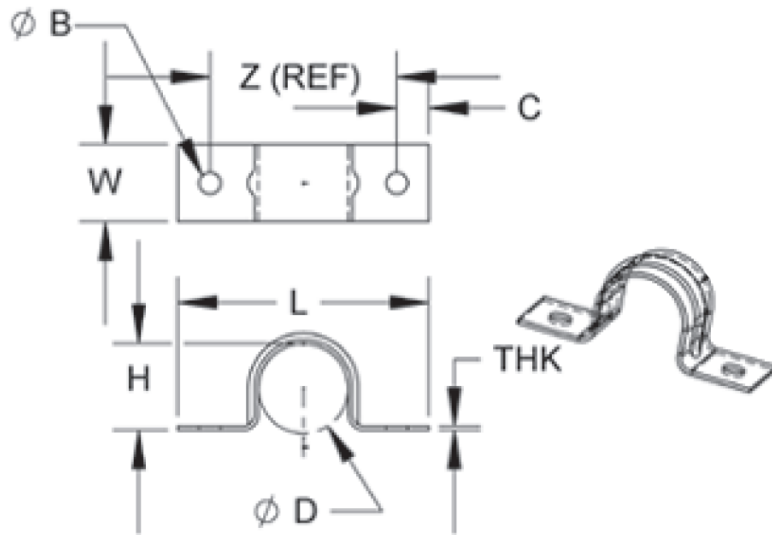


# TWO-HOLE IPS GALVANEAELED EMT PIPE STRAPS



Part #	Model #	Description (Size)	Inner Carton Qty	Master Carton Qty	Select Model Below
<b>TWO-HOLE IPS GALVANEAELED EMT PIPE STRAP</b>					
H19543	HMGPSEMT12	1/2" IPS GALVANEAELED 2-HOLE EMT PIPE STRAP	-	100	<input type="checkbox"/>
H19544	HMGPSEMT34	3/4" IPS GALVANEAELED 2-HOLE EMT PIPE STRAP	-	100	<input type="checkbox"/>

**MADE IN THE USA**



## MATERIAL / FINISH

- STEEL
- GALVANEAELED

## DIMENSION CHART

SIZE	D	H	THK	W	L	B	C	Z (ref)
<b>Tol.</b>	0.06	0.03	US GAGE	0.12	0.25	0.032	0.06	0.06
	-0.02	-0.06	MIN. THK.	-0.03	-0.12	-0.015	-0.03	-0.06
<b>1/2</b>	0.84	0.84	22 Ga. (.028)	0.75	2.62	0.200	0.38	1.80
<b>3/4</b>	1.05	1.05	22 Ga. (.028)	0.75	2.75	0.200	0.38	2.06

JOB NAME: \_\_\_\_\_

JOB LOCATION: \_\_\_\_\_

CONTRACTOR: \_\_\_\_\_ DATE: \_\_\_\_\_

ITEM TAG: \_\_\_\_\_

ENGINEER APPROVAL: \_\_\_\_\_ DATE: \_\_\_\_\_

PART NUMBER: \_\_\_\_\_