

TWO-HOLE COPPER CLAD PIPE STRAPS



Part #	Model #	Description (Size)	Inner Carton Qty	Master Carton Qty	Select Model Below
TWO-HOLE COPPER CLAD PIPE STRAPS (NORMAL TUBE STRAP)					
H19541	HMCCPS14	1/4" COPPER CLAD 2-HOLE PIPE STRAP	100	2000	<input type="checkbox"/>
H19720	HMCCPS38	3/8" COPPER CLAD 2-HOLE PIPE STRAP	100	2000	<input type="checkbox"/>
H19721	HMCCPS12	1/2" COPPER CLAD 2-HOLE PIPE STRAP	100	2000	<input type="checkbox"/>
H19722	HMCCPS34	3/4" COPPER CLAD 2-HOLE PIPE STRAP	100	1000	<input type="checkbox"/>
H19723	HMCCPS1	1" COPPER CLAD 2-HOLE PIPE STRAP	-	100	<input type="checkbox"/>
H19724	HMCCPS114	1-1/4" COPPER CLAD 2-HOLE PIPE STRAP	-	100	<input type="checkbox"/>
H19725	HMCCPS112	1-1/2" COPPER CLAD 2-HOLE PIPE STRAP	-	100	<input type="checkbox"/>
H19726	HMCCPS2	2" COPPER CLAD 2-HOLE PIPE STRAP	-	100	<input type="checkbox"/>

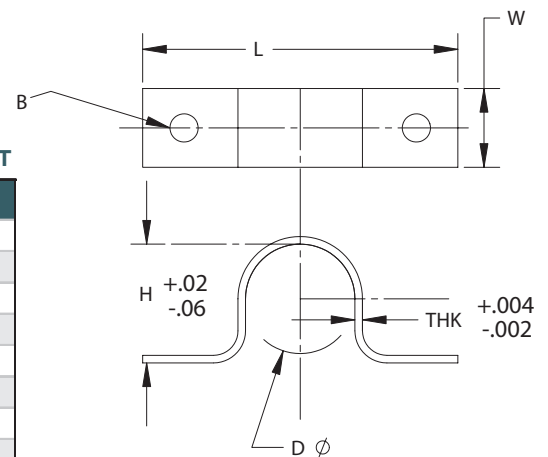
MADE IN THE USA

MATERIALS

- STEEL COPPER PLATED

DIMENSION CHART

SIZE	D	H	THK	W	L	B
1/4	.37	.38	.020	0.50	1-5/8	.180
3/8	.50	.50	.020	0.50	1-13/16	.180
1/2	.62	.62	.020	0.50	1-15/16	.180
3/4	.87	.88	.020	0.50	2-1/4	.180
1	1.12	1.12	.020	0.62	2-3/4	.180
1-1/4	1.37	1.38	.021	0.75	2-5/8	.180
1-1/2	1.62	1.62	.021	0.75	2-7/8	.180
2	2.12	2.12	.021	0.75	3-3/8	.180



JOB NAME:

JOB LOCATION:

CONTRACTOR:

DATE:

ITEM TAG:

ENGINEER APPROVAL:

DATE:

PART NUMBER: