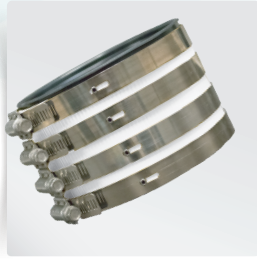


HEAVY DUTY NO-HUB COUPLING



Part #	Model #	Description (Size)	SS CLAMPS	Inner Carton Qty	Master Carton Qty	Select Model Below
HEAVY DUTY NO-HUB COUPLING						
H99919	HPNHCHD112	1-1/2" x 1-1/2" HEAVY DUTY NO-HUB COUPLING	4	1	75	<input type="checkbox"/>
H99920	HPNHCHD2	2" x 2" HEAVY DUTY NO-HUB COUPLING	4	1	75	<input type="checkbox"/>
H99921	HPNHCHD3	3" x 3" HEAVY DUTY NO-HUB COUPLING	4	1	48	<input type="checkbox"/>
H99922	HPNHCHD4	4" x 4" HEAVY DUTY NO-HUB COUPLING	4	1	48	<input type="checkbox"/>
H99923	HPNHCHD5	5" x 5" HEAVY DUTY NO-HUB COUPLING	6	1	15	<input type="checkbox"/>
H99924	HPNHCHD6	6" x 6" HEAVY DUTY NO-HUB COUPLING	6	1	15	<input type="checkbox"/>
H99925	HPNHCHD8	8" x 8" HEAVY DUTY NO-HUB COUPLING	6	1	15	<input type="checkbox"/>
H99926	HPNHCHD10	10" x 10" HEAVY DUTY NO-HUB COUPLING	6	1	10	<input type="checkbox"/>
H99927	HPNHCHD121	12" x 12" HEAVY DUTY NO-HUB COUPLING	6	1	8	<input type="checkbox"/>
H99928	HPNHCHD15	15" x 15" HEAVY DUTY NO-HUB COUPLING	6	1	4	<input type="checkbox"/>

SPECIFICATIONS MEET THE FOLLOWING STANDARDS:
 ASTM C1540
 NSF ASTM C1277 and CISPI 310

GENERAL USAGE AND INFORMATION:

Designed to connect cast iron no-hub soil pipe and no-hub fittings in above ground and underground residential and commercial applications requiring greater stability and rigidity. Heavy Duty No-Hub Couplings supply additional clamping and sealing forces than standard No-Hub Couplings.

Heavy Duty Coupling design utilizes additional band clamps along the entire length of the coupling, larger shields and longer gaskets, as compared to standard couplings.

Durable 28-gauge stainless steel shields are corrugated, permitting even gasket compression and reduced buckling at the overlap.

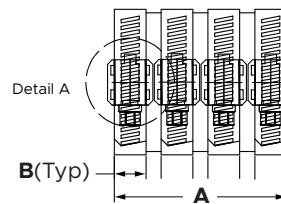
Full-pattern Neoprene rubber gasket is tear-resistant and internally beaded, to ensure a positive seal and mechanical joint, with greater pull-out resistance.

Note: All 5/16" hex-head worm-gear screws must be incrementally tightened to 80 in-lb with a calibrated torque wrench to assure even compression and sealing.

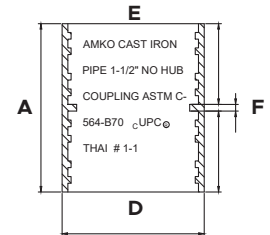
DIMENSIONS - INCHES

Size	# of band clamps	A	B	C	D	E	F
1-1/2"	4	3.00	0.55	10.47	1.94	1.53	0.12
2"	4	3.00	0.55	10.47	2.34	1.97	0.12
3"	4	3.00	0.55	13.50	3.34	2.97	0.12
4"	4	3.00	0.55	16.61	4.41	4.00	0.12
5"	6	4.00	0.55	20.51	5.34	4.97	0.12
6"	6	4.00	0.55	23.07	6.34	5.97	0.12
8"	6	4.00	0.55	29.76	8.34	7.97	0.12
12"	6	4.00	0.55	29.76	12.43	12.00	0.12
15"	6	4.00	0.55	29.76	15.65	15.20	0.12

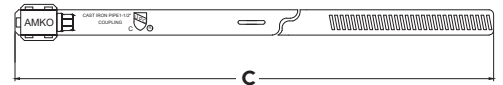
Pictured Below:
4" heavy-duty no hub, front view



Pictured Below:
4" heavy-duty no hub gasket, cut-away view



Pictured Below:
Heavy-duty band clamp detail



Detail A
Worm-gear cover

MATERIAL SPECIFICATION

PART	MATERIAL	SPECIFICATION
1 Shield	Stainless steel	AISI 300
2 Band clamp	Stainless steel	AISI 300
3 Worm gear screw -- 5/16" hex-head	Stainless steel	AISI 300
4 Worm gear cover	Stainless steel	AISI 300
5 Gasket	Neoprene rubber	ASTM C564-2014

JOB NAME:

JOB LOCATION:

CONTRACTOR:

DATE:

ITEM TAG:

ENGINEER APPROVAL:

DATE:

PART NUMBER: