

F1960 PEX BRASS BALL VALVES



PART #	MODEL #	DESCRIPTION (SIZE)	INNER CARTON QTY.	MASTER CARTON QTY.	SELECT MODEL BELOW
BRASS BALL VALVES (F1960 PEX x F1960 PEX)					
H50050	PXW400LF12	1/2" x 1/2" BRASS F1960 PEX BALL VALVE	10	100	<input type="checkbox"/>
H50051	PXW400LF34	3/4" X 3/4" BRASS F1960 PEX BALL VALVE	10	60	<input type="checkbox"/>
H50052	PXW400LF1	1" x 1" BRASS F1960 PEX BALL VALVE	8	40	<input type="checkbox"/>

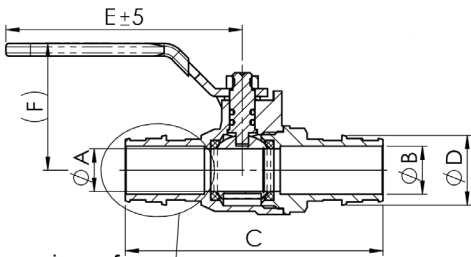
FEATURES & BENEFITS

- PEX Ball Valve • Brass Body • ASTM F1960 PEX • 400 WOG
- Chrome Plated Brass Ball • cUPC Certified and Lead-Free
- Complies with IAPMO / ANSI Z1157-2014e1
- Complies with NSF / ANSI 14-2010a

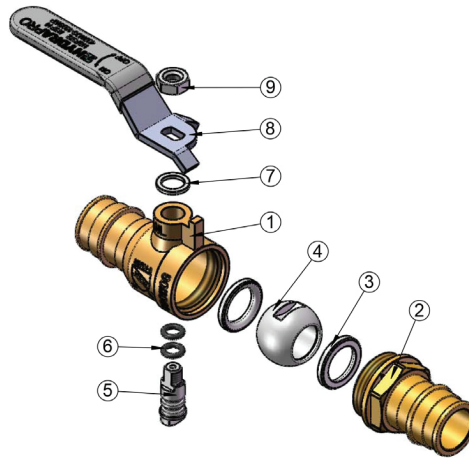
	A	B	C	D	E	F
1/2"	0.39	0.39	2.60	0.61	2.95	1.50
3/4"	0.53	0.60	3.21	0.87	3.17	1.57
1"	0.75	0.81	3.98	1.11	4.17	1.97

NO.	PART	MATERIAL
1	Body	C46500
2	Bonnet	C46500
3	Seat	PTFE
4	Ball	Stainless Steel
5	Stem	C46500

NO.	PART	MATERIAL
6	O-Ring	EPDM
7	Washer	PTFE
8	Handle	Q235
9	Hex-Nut	Q235



The dimensions of circled part meet the standard "ASTM F1960 - 2012"



JOB NAME:

JOB LOCATION:

CONTRACTOR:

ENGINEER APPROVAL:

DATE:

DATE:

ITEM TAG:

PART NUMBER: