

LIGHT-DUTY ELECTROPLATED CLEVIS HANGER



PART #	MODEL #	DESCRIPTION	MAX LOAD (LBS.)	INNER CARTON QTY	MASTER CARTON QTY	SELECT MODEL BELOW
LIGHT-DUTY ELECTROPLATED CLEVIS PIPE HANGERS						
H33147	HMLCL12E	1/2" Light Duty Plated Clevis Hanger	750	1	50	<input type="checkbox"/>
H33148	HMLCL34E	3/4" Light Duty Plated Clevis Hanger	750	1	50	<input type="checkbox"/>
H33149	HMLCL1E	1" Light Duty Plated Clevis Hanger	750	1	50	<input type="checkbox"/>
H33150	HMLCL114E	1-1/4" Light Duty Plated Clevis Hanger	750	1	50	<input type="checkbox"/>
H33151	HMLCL112E	1-1/2" Light Duty Plated Clevis Hanger	750	1	50	<input type="checkbox"/>
H33152	HMLCL2E	2" Light Duty Plated Clevis Hanger	750	1	50	<input type="checkbox"/>
H33153	HMLCL212E	2-1/2" Light Duty Plated Clevis Hanger	850	1	25	<input type="checkbox"/>
H33154	HMLCL3E	3" Light Duty Plated Clevis Hanger	1,050	1	25	<input type="checkbox"/>
H33156	HMLCL4E	4" Light Duty Plated Clevis Hanger	1,500	1	25	<input type="checkbox"/>

MATERIAL: Steel

FEATURES: • Complies with MSS SP-69 (Type 1) and WW-H-171 (Type 1)

Max Temp:
450° F

JOB NAME: _____

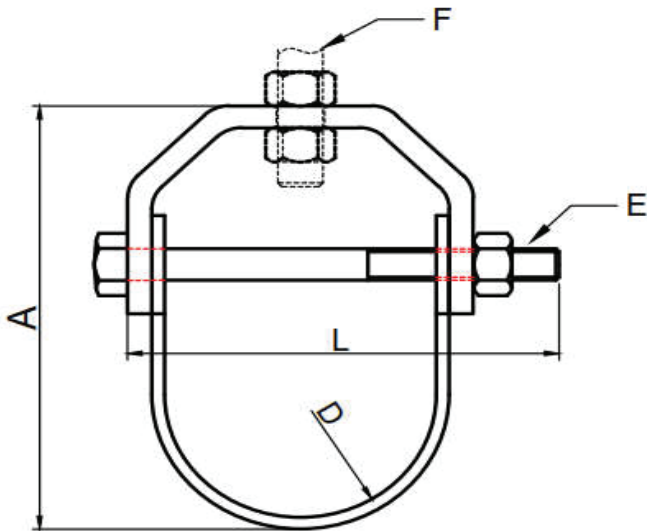
JOB LOCATION: _____

CONTRACTOR: _____ DATE: _____

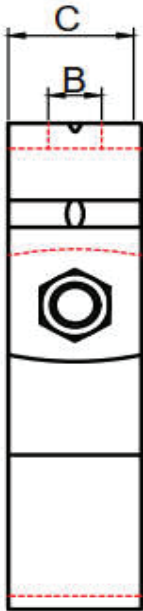
ITEM TAG: _____

ENGINEER APPROVAL: _____ DATE: _____

PART NUMBER: _____

LIGHT-DUTY ELECTROPLATED CLEVIS HANGER


ITEM NO.	SIZE	A	B	C	D	L	E	F
HMLCL12E	1/2"	2.23"	0.42"	0.75"	0.91" - 0.99"	1.69"	1/4"-20UNC	3/8"-16UNC
HMLCL34E	3/4"	2.42"	0.42"	0.75"	1.14" - 1.22"	1.89"	1/4"-20UNC	3/8"-16UNC
HMLCL1E	1"	2.78"	0.42"	0.75"	1.40" - 1.48"	2.17"	1/4"-20UNC	3/8"-16UNC
HMLCL114E	1-1/4"	3.86"	0.42"	0.98"	1.73" - 1.81"	2.56"	1/4"-20UNC	3/8"-16UNC
HMLCL112E	1-1/2"	3.90"	0.42"	0.98"	1.97" - 2.05"	2.76"	1/4"-20UNC	3/8"-16UNC
HMLCL2E	2"	4.49"	0.42"	1.02"	2.50" - 2.62"	3.35"	1/4"-20UNC	3/8"-16UNC
HMLCL212E	2-1/2"	5.16"	0.54"	1.18"	2.95" - 3.07"	4.13"	3/8"-16UNC	1/2"-13UNC
HMLCL3E	3"	6.00"	0.54"	1.18"	3.62" - 3.74"	4.72"	3/8"-16UNC	1/2"-13UNC
HMLCL312E	3-1/2"	6.41"	0.54"	1.18"	4.11" - 4.23"	5.32"	3/8"-16UNC	1/2"-13UNC
HMLCL4E	4"	7.64"	0.67"	1.18"	4.63" - 4.74"	5.91"	3/8"-16UNC	5/8"-11UNC


MATERIAL: Steel

FEATURES: • Complies with MSS SP-69 (Type 1) and WW-H-171 (Type 1)

Max Temp:
450° F
JOB NAME: _____

JOB LOCATION: _____

CONTRACTOR: _____

DATE: _____

ITEM TAG: _____

ENGINEER APPROVAL: _____

DATE: _____

PART NUMBER: _____