

ELECTROPLATED RISER CLAMPS



PART #	MODEL #	DESCRIPTION	INNER CARTON QTY	MASTER CARTON QTY	SELECT MODEL BELOW
ELECTROPLATED RISER CLAMPS					
H33517	HMRC12E	1/2" Plated Riser Clamp	1	25	<input type="checkbox"/>
H33518	HMRC34E	3/4" Plated Riser Clamp	1	25	<input type="checkbox"/>
H33519	HMRC1E	1" Plated Riser Clamp	1	25	<input type="checkbox"/>
H33520	HMRC114E	1-1/4" Plated Riser Clamp	1	25	<input type="checkbox"/>
H33521	HMRC112E	1-1/2" Plated Riser Clamp	1	25	<input type="checkbox"/>
H33522	HMRC2E	2" Plated Riser Clamp	1	25	<input type="checkbox"/>
H33523	HMRC212E	2-1/2" Plated Riser Clamp	1	25	<input type="checkbox"/>
H33524	HMRC3E	3" Plated Riser Clamp	1	25	<input type="checkbox"/>
H33525	HMRC4E	4" Plated Riser Clamp	1	25	<input type="checkbox"/>
H33526	HMRC5E	5" Plated Riser Clamp	1	25	<input type="checkbox"/>
H33527	HMRC6E	6" Plated Riser Clamp	1	25	<input type="checkbox"/>
H33528	HMRC8E	8" Plated Riser Clamp	1	EACH	<input type="checkbox"/>
H33529	HMRC10E	10" Plated Riser Clamp	1	EACH	<input type="checkbox"/>
H33530	HMRC-12E	12" Plated Riser Clamp	1	EACH	<input type="checkbox"/>

FINISH: CQ STEEL ZINC COATED

- FEATURES:**
- Complies with A-A-1192A (Type 8) and MSS SP-58 (Type 8)
 - UL Listed applies to 1/2" - 8"
 - FM Approved applies to 3/4" - 8"

JOB NAME: _____

JOB LOCATION: _____

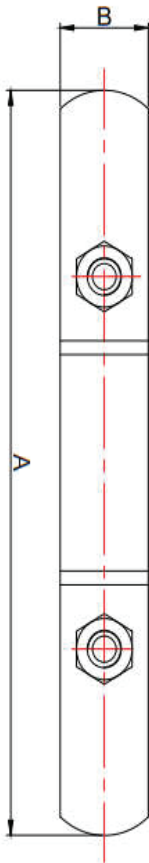
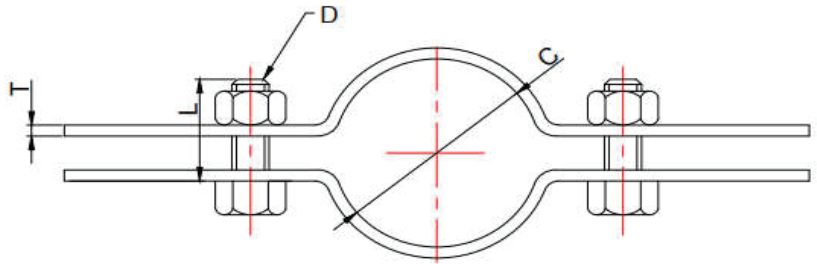
CONTRACTOR: _____ **DATE:** _____

ITEM TAG: _____

ENGINEER APPROVAL: _____ **DATE:** _____

PART NUMBER: _____

ELECTROPLATED RISER CLAMPS



ITEM NO.	SIZE	A	B	C	T	L	D
HMRC12E	1/2"	8.50"	1.02"	0.95"-1.02"	0.13"	1.18"	3/8"-16UNC
HMRC34E	3/4"	8.98"	1.02"	1.14"-1.22"	0.13"	1.18"	3/8"-16UNC
HMRC1E	1"	8.98"	1.02"	1.42"-1.50"	0.13"	1.18"	3/8"-16UNC
HMRC114E	1-1/4"	9.45"	1.02"	1.73"-1.81"	0.13"	1.18"	3/8"-16UNC
HMRC112E	1-1/2"	9.84"	1.02"	2.05"-2.13"	0.13"	1.18"	3/8"-16UNC
HMRC2E	2"	10.55"	1.02"	2.44"-2.52"	0.20"	1.57"	3/8"-16UNC
HMRC212E	2-1/2"	11.02"	1.18"	3.03"-3.11"	0.20"	1.57"	3/8"-16UNC
HMRC3E	3"	11.73"	1.18"	3.62"-3.70"	0.20"	1.57"	3/8"-16UNC
HMRC312E	3-1/2"	12.64"	1.18"	4.09"-4.17"	0.20"	1.57"	3/8"-16UNC
HMRC4E	4"	12.95"	1.49"	4.49"-4.57"	0.24"	1.77"	1/2"-13UNC
HMRC5E	5"	14.25"	1.49"	5.55"-5.63"	0.24"	1.77"	1/2"-13UNC
HMRC6E	6"	15.51"	1.49"	6.61"-6.69"	0.24"	1.77"	1/2"-13UNC
HMRC8E	8"	18.27"	1.96"	8.66"-8.78"	0.37"	2.17"	5/8"-11UNC
HMRC10E	10"	20.28"	1.96"	10.83"-10.94"	0.37"	2.17"	5/8"-11UNC
HMRC12E	12"	22.36"	1.96"	12.87"-12.99"	0.47"	2.36"	5/8"-11UNC

FINISH: CQ STEEL ZINC COATED

- FEATURES:**
- Complies with A-A-1192A (Type 8) and MSS SP-58 (Type 8)
 - UL Listed applies to 1/2" - 8"
 - FM Approved applies to 3/4" - 8"

JOB NAME: _____

JOB LOCATION: _____

CONTRACTOR: _____ **DATE:** _____

ITEM TAG: _____

ENGINEER APPROVAL: _____ **DATE:** _____

PART NUMBER: _____