

ELECTROPLATED CLEVIS HANGER



PART #	MODEL #	DESCRIPTION	MAX LOAD (LBS.)	INNER CARTON QTY	MASTER CARTON QTY	SELECT MODEL BELOW
STANDARD ELECTROPLATED CLEVIS HANGERS						
H33500	HMCL12E	1/2" Electroplated Clevis Hanger	750	1	50	<input type="checkbox"/>
H33501	HMCL34E	3/4" Electroplated Clevis Hanger	750	1	50	<input type="checkbox"/>
H33502	HMCL1E	1" Electroplated Clevis Hanger	750	1	50	<input type="checkbox"/>
H33503	HMCL114E	1-1/4" Electroplated Clevis Hanger	750	1	50	<input type="checkbox"/>
H33504	HMCL112E	1-1/2" Electroplated Clevis Hanger	750	1	50	<input type="checkbox"/>
H33505	HMCL2E	2" Electroplated Clevis Hanger	750	1	50	<input type="checkbox"/>
H33506	HMCL212E	2-1/2" Electroplated Clevis Hanger	850	1	25	<input type="checkbox"/>
H33507	HMCL3E	3" Electroplated Clevis Hanger	1,050	1	25	<input type="checkbox"/>
H33508	HMCL312E	3-1/2" Electroplated Clevis Hanger	1,250	1	25	<input type="checkbox"/>
H33509	HMCL4E	4" Electroplated Clevis Hanger	1,500	1	25	<input type="checkbox"/>
H33510	HMCL5E	5" Electroplated Clevis Hanger	2,000	1	25	<input type="checkbox"/>
H33511	HMCL6E	6" Electroplated Clevis Hanger	2,650	1	25	<input type="checkbox"/>
H33512	HMCL8E	8" Electroplated Clevis Hanger	4,050	1	25	<input type="checkbox"/>
H33513	HMCL10E	10" Electroplated Clevis Hanger	5,850	1	EACH	<input type="checkbox"/>
H33514	HMCL-12E	12" Electroplated Clevis Hanger	7,900	1	EACH	<input type="checkbox"/>
H33516	HMCL-14E	14" Electroplated Clevis Hanger	-	1	EACH	<input type="checkbox"/>
-	HMCL-16E	16" Electroplated Clevis Hanger	-	1	EACH	<input type="checkbox"/>
-	HMCL-18E	18" Electroplated Clevis Hanger	-	1	EACH	<input type="checkbox"/>

MATERIAL: Steel

FEATURES: • Complies with MSS SP-58 (Type 1) and WW-H-171 (Type 1)
• UL Listed applies to 1/2" - 8" • FM Approved applies to 3/4" - 6"

Max Temp:
450° F

JOB NAME: _____

JOB LOCATION: _____

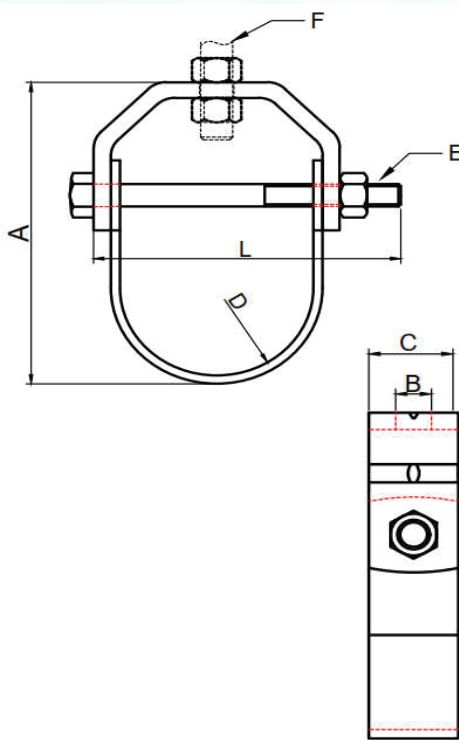
CONTRACTOR: _____ **DATE:** _____

ENGINEER APPROVAL: _____ **DATE:** _____

ITEM TAG: _____

PART NUMBER: _____

ELECTROPLATED CLEVIS HANGER



ITEM NO.	SIZE	A	B	C	D	L	E	F	REQUIRED LOAD (LBS)
HMCL12E	1/2"	2.23"	0.42"	0.75"	0.91" - 0.99"	1.69"	1/4"-20UNC	3/8"-16UNC	750
HMCL34E	3/4"	2.42"	0.42"	0.75"	1.14" - 1.22"	1.89"	1/4"-20UNC	3/8"-16UNC	750
HMCL1E	1"	2.78"	0.42"	0.75"	1.40" - 1.48"	2.17"	1/4"-20UNC	3/8"-16UNC	750
HMCL14E	1-1/4"	3.86"	0.42"	0.98"	1.73" - 1.81"	2.56"	1/4"-20UNC	3/8"-16UNC	750
HMCL12E	1-1/2"	3.90"	0.42"	0.98"	1.97" - 2.05"	2.76"	1/4"-20UNC	3/8"-16UNC	750
HMCL2E	2"	4.49"	0.42"	1.02"	2.50" - 2.62"	3.35"	1/4"-20UNC	3/8"-16UNC	750
HMCL212E	2-1/2"	5.16"	0.54"	1.18"	2.95" - 3.07"	4.13"	3/8"-16UNC	1/2"-13UNC	850
HMCL3E	3"	6.00"	0.54"	1.18"	3.62" - 3.74"	4.72"	3/8"-16UNC	1/2"-13UNC	1,050
HMCL312E	3-1/2"	6.41"	0.54"	1.18"	4.11" - 4.23"	5.32"	3/8"-16UNC	1/2"-13UNC	1,250
HMCL4E	4"	7.64"	0.67"	1.18"	4.63" - 4.74"	5.91"	3/8"-16UNC	5/8"-11UNC	1,500
HMCL5E	5"	9.34"	0.67"	1.18"	5.69" - 5.81"	7.09"	3/8"-16UNC	5/8"-11UNC	2,000
HMCL6E	6"	11.27"	0.83"	1.18"	6.82" - 6.98"	8.47"	1/2"-13UNC	3/4"-10UNC	2,650
HMCL8E	8"	13.78"	0.83"	1.18"	8.86" - 9.02"	11.02"	5/8"-11UNC	3/4"-10UNC	4,050
HMCL10E	10"	16.33"	0.98"	1.97"	10.98" - 11.18"	14.57"	3/4"-10UNC	7/8"-9UNC	5,850
HMCL-12E	12"	18.50"	0.98"	1.97"	13.03" - 13.27"	16.93"	3/4"-10UNC	7/8"-9UNC	7,900
HMCL-14E	14"	21.31"	1.14"	1.97"	14.31" - 14.55"	19.69"	1"-8UNC	1"-8UNC	-
HMCL-16E	16"	23.39"	1.14"	2.52"	16.61" - 16.85"	21.65"	1"-8UNC	1"-8UNC	-
HMCL-18E	18"	26.35"	1.26"	2.52"	18.78" - 19.02"	23.62"	1"-8UNC	1-1/8"-7UNC	-

MATERIAL: Steel

FEATURES: • Complies with MSS SP-58 (Type 1) and WW-H-171 (Type 1)
 • UL Listed applies to 1/2" - 8" • FM Approved applies to 3/4" - 6"

Max Temp:
450° F

JOB NAME: _____

JOB LOCATION: _____

CONTRACTOR: _____ **DATE:** _____

ENGINEER APPROVAL: _____ **DATE:** _____

ITEM TAG: _____

PART NUMBER: _____