

## STANDARD COPPER CLEVIS HANGER



PART #	MODEL #	DESCRIPTION	MAX LOAD (LBS.)	INNER CARTON QTY	MASTER CARTON QTY	SELECT MODEL BELOW
<b>STANDARD COPPER CLEVIS HANGERS</b>						
H33600	HMCL12C	1/2" Standard Copper Clevis Hanger	750	1	50	<input type="checkbox"/>
H33601	HMCL34C	3/4" Standard Copper Clevis Hanger	750	1	50	<input type="checkbox"/>
H33602	HMCL1C	1" Standard Copper Clevis Hanger	750	1	50	<input type="checkbox"/>
H33603	HMCL114C	1-1/4" Standard Copper Clevis Hanger	750	1	50	<input type="checkbox"/>
H33604	HMCL112C	1-1/2" Standard Copper Clevis Hanger	750	1	50	<input type="checkbox"/>
H33605	HMCL2C	2" Standard Copper Clevis Hanger	750	1	50	<input type="checkbox"/>
H33606	HMCL212C	2-1/2" Standard Copper Clevis Hanger	850	1	25	<input type="checkbox"/>
H33607	HMCL3C	3" Standard Copper Clevis Hanger	1,050	1	25	<input type="checkbox"/>
H33608	HMCL4C	4" Standard Copper Clevis Hanger	1,250	1	25	<input type="checkbox"/>

**MATERIAL:** Steel

**FEATURES:** • Complies with MSS SP-58 (Type 1) and WW-H-171 (Type 1)  
• Copper Colored Epoxy Finish

**JOB NAME:** \_\_\_\_\_

**JOB LOCATION:** \_\_\_\_\_

**CONTRACTOR:** \_\_\_\_\_

**DATE:** \_\_\_\_\_

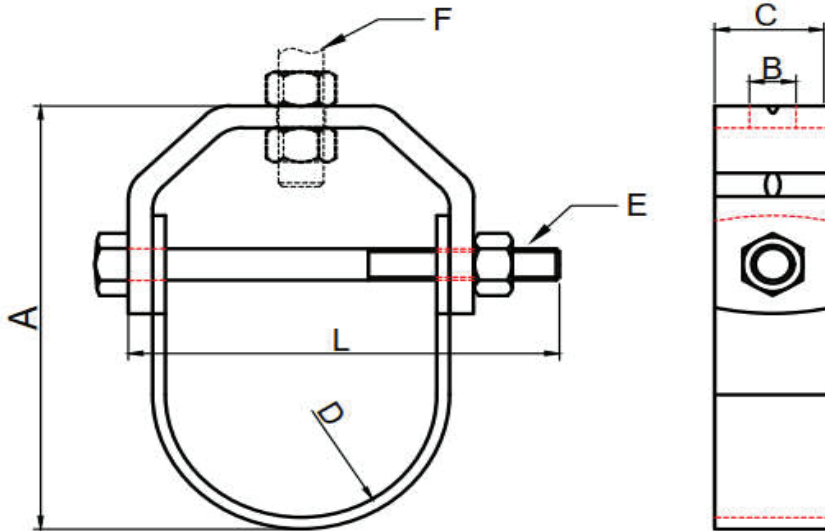
**ITEM TAG:** \_\_\_\_\_

**ENGINEER APPROVAL:** \_\_\_\_\_

**DATE:** \_\_\_\_\_

**PART NUMBER:** \_\_\_\_\_

**STANDARD COPPER CLEVIS HANGER**



UNIT: INCH

ITEM NO.	SIZE	A	B	C	D	L	E	F	REQUIRED LOAD (LBS)
HMCL12C	1/2"	2.04"	0.42"	0.75"	0.70"	1.38"	1/4"-20UNC	3/8"-16UNC	750
HMCL34C	3/4"	2.28"	0.42"	0.75"	0.99"	1.69"	1/4"-20UNC	3/8"-16UNC	750
HMCL1C	1"	2.61"	0.42"	0.75"	1.22"	1.89"	1/4"-20UNC	3/8"-16UNC	750
HMCL114C	1-1/4"	3.21"	0.42"	0.98"	1.49"	2.17"	1/4"-20UNC	3/8"-16UNC	750
HMCL112C	1-1/2"	2.73"	0.42"	0.98"	1.72"	2.56"	1/4"-20UNC	3/8"-16UNC	750
HMCL2C	2"	4.32"	0.42"	0.98"	2.29"	2.95"	1/4"-20UNC	3/8"-16UNC	750
HMCL212C	2-1/2"	4.96"	0.42"	1.18"	2.72"	3.74"	3/8"-16UNC	3/8"-16UNC	850
HMCL3C	3"	5.74"	0.42"	1.18"	3.27"	4.13"	3/8"-16UNC	3/8"-16UNC	1,050
HMCL4C	4"	7.33"	0.42"	1.18"	4.29"	5.31"	3/8"-16UNC	3/8"-16UNC	1,250

**MATERIAL:** Steel

**FEATURES:** • Complies with MSS SP-58 (Type 1) and WW-H-171 (Type 1)  
• Copper Colored Epoxy Finish

**JOB NAME:** \_\_\_\_\_

**JOB LOCATION:** \_\_\_\_\_

**CONTRACTOR:** \_\_\_\_\_ **DATE:** \_\_\_\_\_

**ITEM TAG:** \_\_\_\_\_

**ENGINEER APPROVAL:** \_\_\_\_\_ **DATE:** \_\_\_\_\_

**PART NUMBER:** \_\_\_\_\_