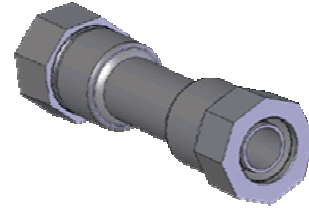


**PRODUCT SPECIFICATIONS SHEET****COMPRESSION MALE ADAPTER**

Available Sizes: .75" IPS; 1 IPS; 1.25" IPS;  
1.5" IPS; 2" IPS



---

Georg Fischer Central Plastics (GFCP) is proud to offer a line of high performance, high quality compression fittings that are safe and economical. Our line of compression fittings reflect over 50 years of common-sense engineering for the gas utility industry.

**Compression Body**

- Carbon Steel C12L14 Grade

**Compression Nut**

- Malleable Cast Iron per ASTM A197

**Cup Washer**

- Steel Coil Commercial Grade

**Compression Gasket**

- Rubber Compound, 70 Durometer per ASTM D2000 3AA 7i5 B13F17

**Stiffener**

- Carbon Steel C1010/1020 Grade

**Epoxy Coating (Option)**

- Epoxy Powder Coating – Gray – Lilly (Cooks) #720-A-115 or equivalent)

**Meets The Requirements of ASTM D2513**

**Recommended for use in connecting polyethylene natural gas pipes.**

---

**PRODUCT SPECIFICATIONS SHEET****COMPRESSION MALE ADAPTER**

Available Sizes: .5" MPT x .5" IPS

.75" MPT x .5" IPS

.75" MPT x .75" IPS

1" MPT x 1" CTS

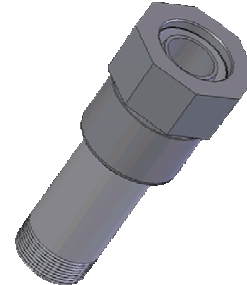
1" MPT x 1" IPS

1" MPT x 1.25" IPS

1.25" MPT x 1.25" IPS

1.5" MPT x 1.5" IPS

2" MPT x 2" IPS



---

Georg Fischer Central Plastics (GFCP) is proud to offer a line of high performance, high quality compression fittings that are safe and economical. Our line of compression fittings reflect over 50 years of common-sense engineering for the gas utility industry.

**Compression Body**

- Carbon Steel C12L14 Grade

**Compression Nut**

- Malleable Cast Iron per ASTM A197

**Cup Washer**

- Steel Coil Commercial Grade

**Compression Gasket**

- Rubber Compound, 70 Durometer per ASTM D2000 3AA 7i5 B13F17

**Stiffener**

- Carbon Steel C1010/1020 Grade

**Epoxy Coating (Option)**

- Epoxy Powder Coating – Gray – Lilly (Cooks) #720-A-115 or equivalent)

**Meets The Requirements of ASTM D2513**

**Recommended for use in connecting polyethylene natural gas pipes.**