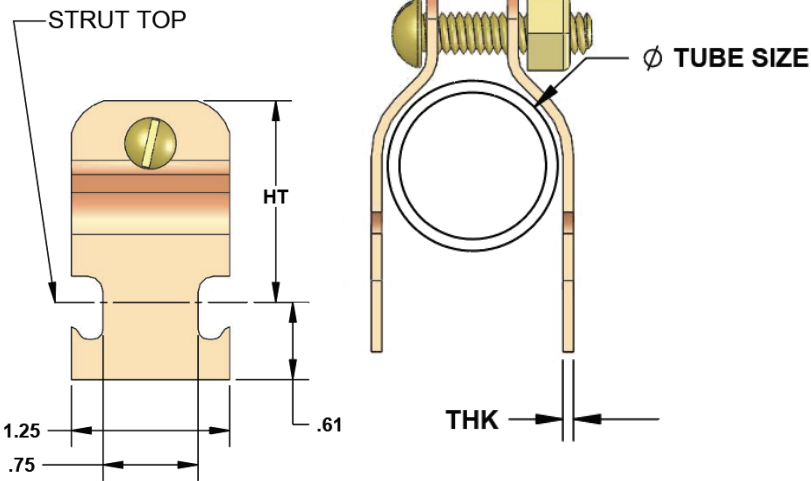
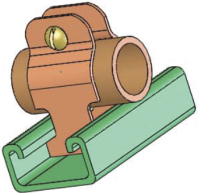


COPPER TUBE STRUT CLAMPS



PART #	MODEL #	DESCRIPTION	INNER CARTON QTY	MASTER CARTON QTY	SELECT MODEL BELOW
COPPER TUBING STRUT CLAMPS					
H33665	HMSC12C	1/2" Copper Tubing Strut Clamp	50	200	<input type="checkbox"/>
H33666	HMSC34C	3/4" Copper Tubing Strut Clamp	50	200	<input type="checkbox"/>
H33667	HMSC1C	1" Copper Tubing Strut Clamp	50	200	<input type="checkbox"/>
H33668	HMSC114C	1-1/4" Copper Tubing Strut Clamp	50	200	<input type="checkbox"/>
H33669	HMSC112C	1-1/2" Copper Tubing Strut Clamp	50	200	<input type="checkbox"/>
H33670	HMSC2C	2" Copper Tubing Strut Clamp	50	200	<input type="checkbox"/>
H33671	HMSC212C	2-1/2" Copper Tubing Strut Clamp	25	100	<input type="checkbox"/>
H33672	HMSC3C	3" Copper Tubing Strut Clamp	25	100	<input type="checkbox"/>
H33673	HMSC4C	4" Copper Tubing Strut Clamp	25	100	<input type="checkbox"/>



PIPE SIZE	THK	HT	BOLT & NUT
1/2"	16 GA	1.4"	1/4" x 1"
3/4"	16 GA	1.6"	1/4" x 1"
1"	16 GA	1.8"	1/4" x 1"
1-1/4"	16 GA	2.4"	1/4" x 1"
1-1/2"	14 GA	2.5"	1/4" x 1"
2"	14 GA	3.0"	1/4" x 1"
2-1/2"	12 GA	3.7"	5/16" x 1-1/4"
3"	12 GA	4.4"	5/16" x 1-1/4"
3-1/2"	11 GA	4.9"	5/16" x 1-1/4"
4"	11 GA	5.4"	5/16" x 1-1/4"

FINISH: Copper Plated

MATERIAL: Steel

JOB NAME: _____

JOB LOCATION: _____

CONTRACTOR: _____

DATE: _____

ITEM TAG: _____

ENGINEER APPROVAL: _____

DATE: _____

PART NUMBER: _____