

## PRICE LIST

MULTIPLIER (x)

FUSION TOOLS MULTIPLIER (FUST):



## GAS FUSION TOOLS

PRICE SHEET: H01.GFT.0323

EFFECTIVE: **03.06.2023**



## SOCKET FUSION WELDING TOOLS



MODEL #	DESCRIPTION (SIZE)	INNER CARTON QTY.	LIST PRICE
<b>HAND HELD SOCKET FUSION TOOL</b>			
WHM32C110KP-1	WIDOS WELD IT (1/2"-2" IPS) with STEEL CARRYING CASE	1	\$ 1,148.85

Hand held Socket fusion tool with an electronic temperature control for the use of anti-stick coated heating spigots and sockets from OD 20 – OD 63 mm (1/2 - 2" IPS). Equipped with control lamps, a digital display, and buttons to set the temperature. For support on the building site or in the workshop, one free standing table support holding device and a vise style holding device is included with the heating tool. Everything is packed in the steel carrying case.

**SOCKETS & SPIGOTS MUST BE PURCHASED SEPERATELY**

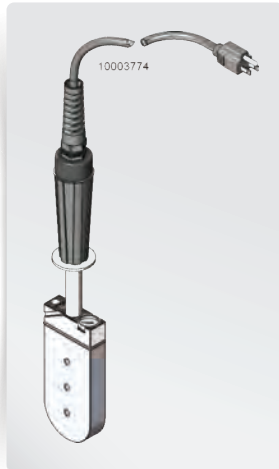


MODEL #	DESCRIPTION (SIZE)	INNER CARTON QTY.	LIST PRICE
<b>SOCKET &amp; SPIGOT TOOLS WITH SCREW</b>			
WHD012AF	1/2" IPS SOCKET & SPIGOT ASTM F1056 SILVERSTONE	1	\$ 123.50
WHD034AF	3/4" IPS SOCKET & SPIGOT ASTM F1056 SILVERSTONE	1	\$ 256.10
WHD100AF	1" IPS SOCKET & SPIGOT ASTM F1056 SILVERSTONE	1	\$ 347.80
WHD114AF	1-1/4" IPS SOCKET & SPIGOT ASTM F1056 SILVERSTONE	1	\$ 391.00
WHD112AF	1-1/2" IPS SOCKET & SPIGOT ASTM F1056 SILVERSTONE	1	\$ 436.58
WHD200AF	2" IPS SOCKET & SPIGOT ASTM F1056 SILVERSTONE	1	\$ 538.30
WHD400AF	4" IPS SOCKET & SPIGOT ASTM F1056 SILVERSTONE	1	\$ 1,494.00

IPS Non-Stick Socket & Spigot **connects to WIDOS heating tool** to melt the internal surface of the fitting and external surface of the pipe ASTM F1056.



### SOCKET FUSION HEATING TOOLS



MODEL #	DESCRIPTION (SIZE)	INNER CARTON QTY.	LIST PRICE
<b>HEATING TOOLS</b>			
360001626	MODEL 3 SF HEATING TOOL FUSION TOOL -- SOCKET FUSION ONLY	1	\$ 1,484.64

Socket Fusion Heating Tool used to heat the fittings and pipe sidewalls



SCREWS INCLUDED

MODEL #	DESCRIPTION (SIZE)	INNER CARTON QTY.	LIST PRICE
<b>PLUG &amp; SOCKET TOOLS</b>			
360002231	1/2" CTS SOCKET PLUG AND SOCKET	1	\$ 421.11
360002222	1/2" IPS STANDARD PLUG AND SOCKET	1	\$ 421.11
360002225	3/4" IPS STANDARD PLUG AND SOCKET	1	\$ 421.11
360002229	1" CTS SOCKET PLUG AND SOCKET	1	\$ 421.11
360002220	1" IPS STANDARD PLUG AND SOCKET	1	\$ 421.11
360002218	1-1/4" IPS STANDARD PLUG AND SOCKET	1	\$ 421.11
360002217	1-1/2" IPS STANDARD PLUG AND SOCKET	1	\$ 421.11
360002223	2" IPS STANDARD PLUG AND SOCKET	1	\$ 421.11
360002224	3" IPS STANDARD PLUG AND SOCKET	1	\$ 604.00
360002226	4" IPS STANDARD PLUG AND SOCKET	1	\$ 620.90

Plug & Socket Face Set that connect to Model 3 heater to heat pipe and fitting



### SOCKET FUSION LOCKING PLIERS



MODEL #	DESCRIPTION (SIZE)	INNER CARTON QTY.	LIST PRICE
<b>COLD RING SOCKET FUSION LOCKING PLIERS</b>			
360000698	1/2" CTS COLD RING SOCKET FUSION LOCKING PLIERS	1	\$ 296.74
360000699	1/2" IPS COLD RING SOCKET FUSION LOCKING PLIERS	1	\$ 356.16
360000701	3/4" IPS COLD RING SOCKET FUSION LOCKING PLIERS	1	\$ 296.74
360000697	1" IPS COLD RING SOCKET FUSION LOCKING PLIERS	1	\$ 296.74
360000695	1-1/4" IPS COLD RING SOCKET FUSION LOCKING PLIERS	1	\$ 477.64
360000694	1-1/2" IPS COLD RING SOCKET FUSION LOCKING PLIERS	1	\$ 477.64
360000700	2" IPS COLD RING SOCKET FUSION LOCKING PLIERS	1	\$ 477.64

Cold Ring Clamp is used to clamp the pipe at the proper depth, help insure that the pipe is round and hold the pipe to be fused.



MODEL #	DESCRIPTION (SIZE)	INNER CARTON QTY.	LIST PRICE
<b>COLD RING SOCKET FUSION CLAMP STYLE LOCKING PLIERS</b>			
360004354	3" IPS COLD RING SOCKET FUSION CLAMP STYLE	1	\$ 1,846.53
360000702	4" IPS COLD RING SOCKET FUSION CLAMP STYLE	1	\$ 2,043.90

Cold Ring Clamp is used to clamp the pipe at the proper depth, help insure that the pipe is round and hold the pipe to be fused.

## CHAMFER TOOLS & DEPTH GAUGES



GEORG FISCHER CENTRAL PLASTICS



MODEL #	DESCRIPTION (SIZE)	INNER CARTON QTY.	LIST PRICE
<b>CHAMFER TOOLS &amp; DEPTH GAUGES</b>			
360000673	1/2" CTS CHAMFER TOOL AND DEPTH GAUGE	1	\$ 275.58
360000674	1/2" IPS CHAMFER TOOL AND DEPTH GAUGE	1	\$ 275.58
360000675	3/4" IPS CHAMFER TOOL AND DEPTH GAUGE	1	\$ 275.58
360000677	1" IPS CHAMFER TOOL AND DEPTH GAUGE	1	\$ 275.58
360000678	1-1/4" IPS CHAMFER TOOL AND DEPTH GAUGE	1	\$ 275.58
360000679	1-1/2" IPS CHAMFER TOOL AND DEPTH GAUGE	1	\$ 275.58
360000680	2" IPS CHAMFER TOOL AND DEPTH GAUGE	1	\$ 275.58
360004348	3" IPS CHAMFER TOOL AND DEPTH GAUGE	1	\$ 926.95
360003335	4" IPS CHAMFER TOOL AND DEPTH GAUGE	1	\$ 926.95
360000724	3" & 4" IPS DEPTH GAUGE SOCKET FUSION	1	\$ 941.85

For a proper fused connection you must chamfer the end of the pipe and measure the depth to stab in .

## BUTT FUSION EQUIPMENT & COMPONENTS



MODEL #	DESCRIPTION (SIZE)	INNER CARTON QTY.	LIST PRICE
<b>MAXIPLAST BF MACHINE</b>			
W45SVMAXUS	WIDOS MAXIPLAST BF MACHINE COMPLETE SET 50 - 160 MM	1	\$ 34,411.06

The MaxiPlast is ideal for field and bench fabrication using butt fusion on PE, PP and PVDF pipes and fittings up to 168mm (1 1/2"-6" IPS). This machine is detachable from the base unit, allowing on site welding in very small and confined spaces, such as above ceilings and below raised floors. The machine includes pipe supports, IPS or Metric Reducer Inserts. Power requirements (110v).

## BUTT FUSION EQUIPMENT & COMPONENTS



MODEL #	DESCRIPTION (SIZE)	INNER CARTON QTY.	LIST PRICE
<b>BUTT FUSION MACHINE</b>			
360000630	BS4 BUTT FUSION MACHINE 1" - 3" KIT	1	\$ 15,115.90

Butt Fusion kit that comes with 1" thru 3" (except for 1-1/2") and case. (Can do 4") Comes with BS4 machine, electric trimmer & heater, heater muff and rope, butt plate set, 1", 1-1/4", 2", and 3" liner sets and Pro Mobile Stanley Job Chest.



MODEL #	DESCRIPTION (SIZE)	INNER CARTON QTY.	LIST PRICE
<b>ELECTRIC HEATER FOR BUTT FUSION</b>			
360001623	MODEL 4SW ELEC HEATER ONLY with HI-TEMP HANDLE FOR BUTT FUSION	1	\$ 2,266.43

Heats the butt ends of the pipe & fittings.



## BUTT FUSION EQUIPMENT & COMPONENTS



GEORG FISCHER CENTRAL PLASTICS



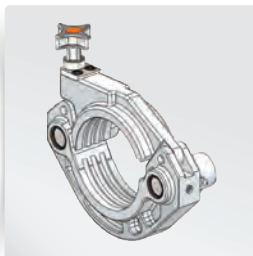
MODEL #	DESCRIPTION (SIZE)	INNER CARTON QTY.	LIST PRICE
<b>BUTT FUSION EQUIPMENT - ELECTRIC TRIMMER ASSEMBLY</b>			
360002656	ELECTRIC TRIMMER ASSEMBLY ONLY--120VAC	1	\$ 7,405.00

For use with BS4 Machine--Pipe must be trimmed before Butt Fusion Process begins for proper joint.



MODEL #	DESCRIPTION (SIZE)	INNER CARTON QTY.	LIST PRICE
<b>BUTT FUSION EQUIPMENT - CARRIAGE MACHINE</b>			
360000651	BS4 BUTT FUSION 1/2" - 4" CARRIAGE MACHINE ONLY	1	\$ 4,966.69

For use with BS4 Machine--Comes with two plates and a base. Holds the pipe in place and provides a holder for the liners.



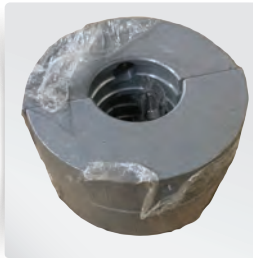
MODEL #	DESCRIPTION (SIZE)	INNER CARTON QTY.	LIST PRICE
<b>HEATER BUTT PLATE</b>			
360000650	HEATER BUTT PLATE SET MODEL 4SW, SET 2 PLATES	1	\$ 431.95

Set of 2 plates to use with BS4 Carriage Machine.

## BUTT FUSION EQUIPMENT & COMPONENTS



GEORG FISCHER CENTRAL PLASTICS



MODEL #	DESCRIPTION (SIZE)	INNER CARTON QTY.	LIST PRICE
<b>BUTT FUSION EQUIPMENT - IPS LINER FOR BS4 TOOL</b>			
360001744	1/2" IPS LINER SET FOR BUTT FUSION BS4 TOOL	1	\$ 512.95
360001746	3/4" IPS LINER SET FOR BUTT FUSION BS4 TOOL	1	\$ 512.95
360001743	1" IPS LINER SET FOR BUTT FUSION BS4 TOOL	1	\$ 512.95
360001741	1-1/4" IPS LINER SET FOR BUTT FUSION BS4 TOOL	1	\$ 512.95
360001740	1-1/2" IPS LINER SET FOR BUTT FUSION BS4 TOOL	1	\$ 512.95
360001745	2" IPS LINER SET FOR BUTT FUSION BS4 TOOL	1	\$ 512.95
360001750	3" IPS LINER SET FOR BUTT FUSION BS4 TOOL	1	\$ 512.95

Liners go inside the 4" Butt Plates for the specific size of pipe or fitting that you are Butt fusing.



MODEL #	DESCRIPTION (SIZE)	INNER CARTON QTY.	LIST PRICE
<b>BUTT FUSION EQUIPMENT - HEATER MUFF</b>			
360001624	HEATER MUFF WITH ROPE FUSION TOOL BAG	1	\$ 323.95

Insulated Bag keeps your fusion paddles from quickly losing heat and protected from job site dirt & debris.





## ELECTROFUSION EQUIPMENT



GEORG FISCHER CENTRAL PLASTICS



MODEL #	DESCRIPTION (SIZE)	INNER CARTON QTY.	LIST PRICE
<b>ELECTROFUSION EQUIPMENT - F PROCESSOR</b>			
360029067	ELECTROFUSION F PROCESSOR MSA 340 115V W/CASE, SCANNER KIT	1	\$ 13,960.64

Electrofusion Processors are specially designed computer-controlled equipment that subject the fitting being installed to a regulated amount of voltage for a designated amount of time.



MODEL #	DESCRIPTION (SIZE)	INNER CARTON QTY.	LIST PRICE
<b>ELECTROFUSION EQUIPMENT - ROTARY PEELER</b>			
360029223	1-1/4" IPS ROTARY PEELER ELECTROFUSION	1	\$ 2,260.37
360029224	1-1/2" IPS ROTARY PEELER ELECTROFUSION	1	\$ 2,297.53
360029225	2" IPS ROTARY PEELER ELECTROFUSION	1	\$ 2,297.53
360029226	3" IPS ROTARY PEELER ELECTROFUSION	1	\$ 2,472.85
360029227	4" IPS ROTARY PEELER ELECTROFUSION	1	\$ 2,535.74
360029228	6" IPS ROTARY PEELER ELECTROFUSION	1	\$ 3,017.00

The pipe surface must be prepared before the fusion process is initiated. Rotary Peelers are designed to remove calculated amounts of surface material from the pipe.

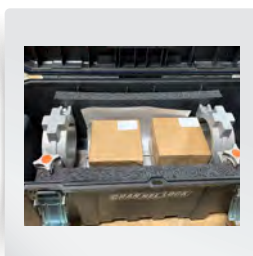


### ELECTROFUSION EQUIPMENT



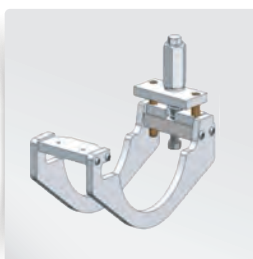
MODEL #	DESCRIPTION (SIZE)	INNER CARTON QTY.	LIST PRICE
<b>ELECTROFUSION EQUIPMENT - MINI CLAMP FULL LOCKING PLIERS</b>			
360001761	2" IPS MINI CLAMP FULL LOCKING PLIERS FOR ELECTROFUSION	1	\$ 688.95

Locking Pliers help re-round the pipe and stable the pipe for the fusion process.



MODEL #	DESCRIPTION (SIZE)	INNER CARTON QTY.	LIST PRICE
<b>ELECTROFUSION EQUIPMENT</b>			
360029222	2" IPS THRU 4,IPS,WITH 18 IN. BAR BASE MULTI CLAMP KIT W/ TOOL BOX FOR ELECTROFUSION	1	\$ 3,627.32

The clamp kit are clamps that hold the EF Coupling in place while it is fused. You can change out the liners (2" IPS and 3" IPS and 4" IPS is the jaws) and then place the pipe in the jaws while the coupling is held between while the fitting is being fused and then held for the required period of time.



MODEL #	DESCRIPTION (SIZE)	INNER CARTON QTY.	LIST PRICE
<b>ELECTROFUSION EQUIPMENT - SADDLE UNDER CLAMP</b>			
360002058	1-1/4" IPS SADDLE UNDER CLAMP ELECTROFUSION	1	\$ 681.69
360002060	2" IPS SADDLE UNDER CLAMP ELECTROFUSION	1	\$ 793.43
360002061	3" IPS SADDLE UNDER CLAMP ELECTROFUSION	1	\$ 959.32
360092229	4" IPS SADDLE UNDER CLAMP ELECTROFUSION	1	\$ 1,794.32
360092116	6" IPS SADDLE UNDER CLAMP ELECTROFUSION	1	\$ 1,847.11

Saddle Clamps hold the two pieces of pipe or the pipe with the Electrofusion fittings while fusing.

## ELECTROFUSION EQUIPMENT & MISC. PARTS

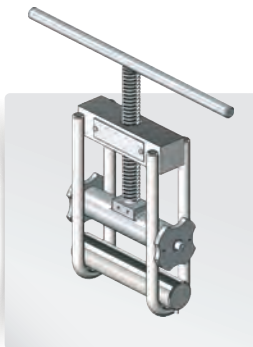


GEORG FISCHER CENTRAL PLASTICS



MODEL #	DESCRIPTION (SIZE)	INNER CARTON QTY.	LIST PRICE
<b>ELECTROFUSION EQUIPMENT - TOP LOAD CLAMP KIT</b>			
360029358	FSEQ TOP LOAD CLAMP KIT W/STRAP/FITTING ADAPTERS	1	\$ 3,158.85

8" IPS-16" DIPS FSEQ, Top Load Clamp Kit, includes Branch Saddles 1-1/4" IPS, 1-1/2" IPS, 2" IPS Butt Outlets. Top Load Clamp holds fitting onto pipe.



MODEL #	DESCRIPTION (SIZE)	INNER CARTON QTY.	LIST PRICE
<b>ELECTROFUSION EQUIPMENT - POLYSQUEEZE OFF TOOL</b>			
360002236	1/2" CTS - 2" IPS POLYSQUEEZE OFF TOOL	1	\$ 1,471.48

1/2" CTS-2" IPS Mechanical Polysqueez tool provides a quick emergency shutoff of polyethylene pipelines until permanent repairs can be made.



IMAGE NOT AVAILABLE

MODEL #	DESCRIPTION (SIZE)	INNER CARTON QTY.	LIST PRICE
<b>ELECTROFUSION EQUIPMENT - REPLACEMENT PARTS</b>			
360029252	REPLACEMENT BLADE KIT WITH SCREWS FOR ROTARY PEELER	1	\$ 382.53
CP10006631	SCREWS ONLY 2PC = 1SET FOR SF FACE PLATES	1	\$ 3.58

Face Plate Screws for Model BS 2 Heating Tool (includes 2 screws).