

PRICE LIST

MULTIPLIER (x)

Lead-Free Brass Ball Valve Multiplier (IBVL):

Gas Ball Valve Multiplier (GBV):

PVC SCH. 40 Ball Valve Multiplier (PBV):

CPVC Ball Valve Multiplier (CPVB):

Thermal Expansion Ball Valve (HPRO):

NEW **LOCKING**
HANDLE DESIGN
NOW AVAILABLE IN STOCK

T-HANDLE BALL
VALVE DESIGN
NOW AVAILABLE IN STOCK



BRASS / GAS / CPVC / PVC BALL VALVES

PRICE SHEET: **H06.BV.1221**

EFFECTIVE: **12.20.21**

REVISION: **07.21.23**

TABLE OF CONTENTS

LEAD-FREE BRASS BALL VALVES

PAGES 1 - 6

| | |
|--|--------|
| LEAD-FREE BRASS BALL VALVES (IPS x IPS) | PAGE 1 |
| LEAD-FREE BRASS BALL VALVES WITH LOCKING HANDLE (IPS x IPS)  | PAGE 1 |
| LEAD-FREE BRASS BALL VALVES (SWEAT x SWEAT) | PAGE 2 |
| LEAD-FREE BRASS BALL VALVES (MIP x PEX) | PAGE 2 |
| LEAD-FREE BRASS BALL VALVES (F1807 PEX x F1807 PEX) | PAGE 3 |
| LEAD-FREE BRASS BALL VALVES (F1960 PEX x F1960 PEX) | PAGE 3 |
| THERMAL EXPANSION BALL VALVE  | PAGE 3 |
| LEAD-FREE T-HANDLE BRASS BALL VALVES (IPS x IPS) | PAGE 4 |
| LEAD-FREE T-HANDLE BRASS BALL VALVES (SWEAT x SWEAT)  | PAGE 4 |
| LEAD-FREE T-HANDLE BRASS BALL VALVES (F1807 PEX)  | PAGE 4 |
| LEAD-FREE T-HANDLE BRASS BALL VALVES (F1960 PEX)  | PAGE 4 |
| LEAD-FREE T-HANDLE BRASS BALL VALVES (F1807 PEX x MIP)  | PAGE 5 |
| LEAD-FREE T-HANDLE BRASS BALL VALVES (F1960 PEX x MIP)  | PAGE 5 |
| BALL VALVE EXTENSION HANDLE | PAGE 5 |
| LOCKING HANDLE <u>ONLY</u> FOR IBVS600 & IBVT600 BRASS BALL VALVES  | PAGE 6 |
| BALL VALVE EXTENSION HANDLE  | PAGE 6 |

GAS BALL VALVES

PAGE 7

| | |
|---|--------|
| GAS BALL VALVES (IPS x IPS) | PAGE 7 |
| GAS BALL VALVES (FLARE O.D. x IPS) | PAGE 7 |
| GAS BALL VALVES (FLARE O.D. x FLARE O.D.) | PAGE 7 |
| GAS BALL VALVES (FIP x FIP) with SIDE TAP  | PAGE 7 |

PVC BALL VALVES

PAGES 8

| | |
|---------------------------------------|--------|
| THREADED PVC BALL VALVE (SCH. 40) | PAGE 8 |
| SOLVENT WELD PVC BALL VALVE (SCH. 40) | PAGE 8 |

CPVC BALL VALVES

PAGE 9

| | |
|------------------------------|--------|
| SOLVENT WELD CPVC BALL VALVE | PAGE 9 |
|------------------------------|--------|



FOR CALIFORNIA CONSUMERS WARNING:

This product can expose you to chemicals including lead compounds, which are known to the State of California to cause cancer and birth defects or other reproductive harm. **For more information go to www.P65Warnings.ca.gov**

www.hydrapro.biz | (877) 813-2333 | Fax (800) 642-2655

Atlanta (GA) • Dallas (TX) • Houston (TX) • Pompano Beach (FL) • Jackson (MI) • Columbus (OH)

MULTIPLIER (IBVL):

LEAD-FREE BRASS BALL VALVES

- Brass Construction
- Full Port
- Lead-Free
- 600 WOG Non-Shock on 1/2" - 2" Valves
- 400 WOG Non-Shock on 2- 1/2" - 4" Valves
- UPC Certified



| PART # | MODEL # | DESCRIPTION / SIZE | INNER CARTON QTY. | MASTER CARTON QTY. | LIST PRICE |
|--------------------------------------|--------------|-----------------------------|-------------------|--------------------|------------|
| BRASS BALL VALVES (IPS x IPS) | | | | | |
| H50018 | IBVT600LF14 | 1/4" BRASS IPS BALL VALVE | 20 | 120 | \$ 14.66 |
| H50019 | IBVT600LF38 | 3/8" BRASS IPS BALL VALVE | 20 | 120 | \$ 14.77 |
| H50020 | IBVT600LF12 | 1/2" BRASS IPS BALL VALVE | 20 | 100 | \$ 15.19 |
| H50021 | IBVT600LF34 | 3/4" BRASS IPS BALL VALVE | 10 | 60 | \$ 21.73 |
| H50022 | IBVT600LF1 | 1" BRASS IPS BALL VALVE | 8 | 40 | \$ 32.51 |
| H50023 | IBVT600LF114 | 1-1/4" BRASS IPS BALL VALVE | 4 | 24 | \$ 56.65 |
| H50024 | IBVT600LF112 | 1-1/2" BRASS IPS BALL VALVE | 3 | 18 | \$ 76.70 |
| H50025 | IBVT600LF2 | 2" BRASS IPS BALL VALVE | 2 | 12 | \$ 112.84 |
| H50026 | IBVT600LF212 | 2-1/2" BRASS IPS BALL VALVE | 2 | 4 | \$ 287.46 |
| H50027 | IBVT600LF3 | 3" BRASS IPS BALL VALVE | 2 | 4 | \$ 432.09 |
| H50028 | IBVT600LF4 | 4" BRASS IPS BALL VALVE | 1 | 2 | \$ 746.30 |

▶▶ NOW AVAILABLE IN STOCK

- Brass Construction
- Full Port
- Lead-Free
- 600 WOG Non-Shock
- Locking Handle
- UPC Certified



| PART # | MODEL # | DESCRIPTION / SIZE | INNER CARTON QTY. | MASTER CARTON QTY. | LIST PRICE |
|--|----------------|--|-------------------|--------------------|------------|
| BRASS BALL VALVES WITH LOCKING HANDLE (IPS x IPS) | | | | | |
| H52020 | IBVT600LF12LH | 1/2" BRASS LOCKING HANDLE BALL VALVE | 20 | 100 | \$ 16.11 |
| H52021 | IBVT600LF34LH | 3/4" BRASS LOCKING HANDLE BALL VALVE | 10 | 60 | \$ 23.00 |
| H52022 | IBVT600LF1LH | 1" BRASS LOCKING HANDLE BALL VALVE | 8 | 40 | \$ 34.44 |
| H52023 | IBVT600LF114LH | 1-1/4" BRASS LOCKING HANDLE BALL VALVE | 4 | 24 | \$ 56.67 |
| H52024 | IBVT600LF112LH | 1-1/2" BRASS LOCKING HANDLE BALL VALVE | 3 | 18 | \$ 76.67 |
| H52025 | IBVT600LF2LH | 2" BRASS LOCKING HANDLE BALL VALVE | 2 | 12 | \$ 112.78 |

▶▶ NOW AVAILABLE IN STOCK



MULTIPLIER (IBVL):

LEAD-FREE BRASS BALL VALVES

- Brass Construction
- Full Port
- Lead-Free
- 600 WOG Non-Shock on 1/2" - 2" Valves
- 400 WOG Non-Shock on 2- 1/2" - 4" Valves
- UPC Certified and Lead-Free



| PART # | MODEL # | DESCRIPTION / SIZE | INNER CARTON QTY. | MASTER CARTON QTY. | LIST PRICE |
|--|--------------|--|-------------------|--------------------|------------|
| BRASS BALL VALVES (SWEAT x SWEAT) | | | | | |
| H50000 | IBVS600LF12 | 1/2" x 1/2" BRASS SWEAT BALL VALVE | 20 | 100 | \$ 15.19 |
| H50001 | IBVS600LF34 | 3/4" x 3/4" BRASS SWEAT BALL VALVE | 10 | 60 | \$ 21.73 |
| H50002 | IBVS600LF1 | 1" x 1" BRASS SWEAT BALL VALVE | 8 | 40 | \$ 32.51 |
| H50003 | IBVS600LF114 | 1-1/4" x 1-1/4" BRASS SWEAT BALL VALVE | 4 | 24 | \$ 56.65 |
| H50004 | IBVS600LF112 | 1-1/2" x 1-1/2" BRASS SWEAT BALL VALVE | 3 | 18 | \$ 76.70 |
| H50005 | IBVS600LF2 | 2" x 2" BRASS SWEAT BALL VALVE | 2 | 12 | \$ 112.84 |
| H50006 | IBVS600LF212 | 2-1/2" x 2-1/2" BRASS SWEAT BALL VALVE | 2 | 4 | \$ 287.46 |
| H50007 | IBVS600LF3 | 3" x 3" BRASS SWEAT BALL VALVE | 2 | 4 | \$ 432.09 |
| H50008 | IBVS600LF4 | 4" x 4" BRASS SWEAT BALL VALVE | 1 | 2 | \$ 746.30 |



| PART # | MODEL # | DESCRIPTION / SIZE | INNER CARTON QTY. | MASTER CARTON QTY. | LIST PRICE |
|--------------------------------------|---------------|--|-------------------|--------------------|------------|
| BRASS BALL VALVES (MIP x PEX) | | | | | |
| H50075 | IBVMP600LF34 | 3/4" x 3/4" BRASS F1807 PEX BALL VALVE | 10 | 60 | \$ 18.05 |
| H50076 | IBVMWP600LF34 | 3/4" x 3/4" BRASS F1960 PEX BALL VALVE | 10 | 60 | \$ 19.88 |

MULTIPLIER (IBVL):

LEAD-FREE BRASS BALL VALVES

- Brass Body
- Full Port
- Lead-Free
- 400 WOG
- Chrome-Plated Brass Ball
- cUPC Certified



| PART # | MODEL # | DESCRIPTION / SIZE | INNER CARTON QTY. | MASTER CARTON QTY. | LIST PRICE |
|--|-------------|----------------------------------|-------------------|--------------------|------------|
| BRASS BALL VALVES (F1807 PEX x F1807 PEX) | | | | | |
| H50038 | PXCP400LF12 | 1/2" x 1/2" BRASS PEX BALL VALVE | 20 | 100 | \$ 12.22 |
| H50039 | PXCP400LF34 | 3/4" x 3/4" BRASS PEX BALL VALVE | 10 | 60 | \$ 18.14 |
| H50040 | PXCP400LF1 | 1" x 1" BRASS PEX BALL VALVE | 8 | 40 | \$ 38.88 |



| PART # | MODEL # | DESCRIPTION / SIZE | INNER CARTON QTY. | MASTER CARTON QTY. | LIST PRICE |
|--|------------|--|-------------------|--------------------|------------|
| BRASS BALL VALVES (F1960 PEX x F1960 PEX) | | | | | |
| H50050 | PXW400LF12 | 1/2" x 1/2" BRASS F1960 PEX BALL VALVE | 10 | 100 | \$ 27.05 |
| H50051 | PXW400LF34 | 3/4" x 3/4" BRASS F1960 PEX BALL VALVE | 10 | 60 | \$ 35.88 |
| H50052 | PXW400LF1 | 1" x 1" BRASS F1960 PEX BALL VALVE | 8 | 40 | \$ 61.38 |

MULTIPLIER (HPRO):

- Forged Brass Body
- Thread conforms to ANSI B1.20.1
- Blow out Proof Stem Design
- Packing Nut
- Handle With Vinyl Grip

RELIEF CONNECTION DETAIL:

- Each Valve Includes 1/2" Pex, 3/8" Barb, and 3/8" Compression Fittings for the Relief Outlet
- Relief Pressure is Factory Set at 125 PSI



| PART # | MODEL # | DESCRIPTION / SIZE | INNER CARTON QTY. | MASTER CARTON QTY. | LIST PRICE |
|-------------------------------------|----------|--------------------------------------|-------------------|--------------------|------------|
| THERMAL EXPANSION BALL VALVE | | | | | |
| H50054 | HPTEBV34 | 3/4" THERMAL EXPANSION LF BALL VALVE | 1 | 12 | \$ 80.35 |

AVAILABLE IN STOCK: Q2 2023



MULTIPLIER (IBVL):

LEAD-FREE BRASS BALL VALVES

- Brass Construction
- Full Port
- Lead-Free
- 600 WOG
- T-Handle Design
- UPC Certified



| PART # | MODEL # | DESCRIPTION / SIZE | INNER CARTON QTY. | MASTER CARTON QTY. | LIST PRICE |
|---|---------------|------------------------------------|-------------------|--------------------|------------|
| BRASS T-HANDLE BALL VALVES (IPS x IPS) | | | | | |
| H50031 | IBVT600LF12TH | 1/2" BRASS IPS T-HANDLE BALL VALVE | 20 | 100 | \$ 14.21 |
| H50032 | IBVT600LF34TH | 3/4" BRASS IPS T-HANDLE BALL VALVE | 10 | 60 | \$ 20.33 |
| H50033 | IBVT600LF1TH | 1" BRASS IPS T-HANDLE BALL VALVE | 8 | 40 | \$ 30.42 |

▶▶▶ NOW AVAILABLE IN STOCK



| PART # | MODEL # | DESCRIPTION / SIZE | INNER CARTON QTY. | MASTER CARTON QTY. | LIST PRICE |
|---|---------------|--------------------------------------|-------------------|--------------------|------------|
| BRASS T-HANDLE BALL VALVES (SWEAT x SWEAT) | | | | | |
| H50011 | IBVS600LF12TH | 1/2" BRASS SWEAT T-HANDLE BALL VALVE | 20 | 100 | \$ 14.21 |
| H50012 | IBVS600LF34TH | 3/4" BRASS SWEAT T-HANDLE BALL VALVE | 10 | 60 | \$ 20.33 |
| H50013 | IBVS600LF1TH | 1" BRASS SWEAT T-HANDLE BALL VALVE | 8 | 40 | \$ 30.42 |

▶▶▶ NOW AVAILABLE IN STOCK

- 400 WOG
- T-Handle Design
- UPC Certified



| PART # | MODEL # | DESCRIPTION / SIZE | INNER CARTON QTY. | MASTER CARTON QTY. | LIST PRICE |
|---|---------------|------------------------------------|-------------------|--------------------|------------|
| BRASS T-HANDLE BALL VALVES (F1807 PEX x F1807 PEX) | | | | | |
| H50045 | PXCP400LF12TH | 1/2" BRASS PEX T-HANDLE BALL VALVE | 20 | 100 | \$ 11.44 |
| H50046 | PXCP400LF34TH | 3/4" BRASS PEX T-HANDLE BALL VALVE | 10 | 60 | \$ 16.98 |
| H50047 | PXCP400LF1TH | 1" BRASS PEX T-HANDLE BALL VALVE | 8 | 40 | \$ 36.39 |

▶▶▶ NOW AVAILABLE IN STOCK

- 400 WOG
- T-Handle Design
- UPC Certified



| PART # | MODEL # | DESCRIPTION / SIZE | INNER CARTON QTY. | MASTER CARTON QTY. | LIST PRICE |
|---|--------------|------------------------------------|-------------------|--------------------|------------|
| BRASS T-HANDLE BALL VALVES (F1960 PEX x F1960 PEX) | | | | | |
| H50055 | PXW400LF12TH | 1/2" BRASS PEX T-HANDLE BALL VALVE | 20 | 100 | \$ 25.32 |
| H50056 | PXW400LF34TH | 3/4" BRASS PEX T-HANDLE BALL VALVE | 10 | 60 | \$ 33.58 |
| H50057 | PXW400LF1TH | 1" BRASS PEX T-HANDLE BALL VALVE | 8 | 40 | \$ 57.46 |

▶▶▶ NOW AVAILABLE IN STOCK

MULTIPLIER (IBVL):

LEAD-FREE BRASS BALL VALVES

- Brass Construction
- Full Port
- Lead-Free
- 600 WOG
- T-Handle Design
- UPC Certified



| PART # | MODEL # | DESCRIPTION / SIZE | INNER CARTON QTY. | MASTER CARTON QTY. | LIST PRICE |
|---|----------------|------------------------------------|-------------------|--------------------|------------|
| BRASS T-HANDLE BALL VALVES (F1807 PEX x MIP) | | | | | |
| H50048 | IBVMP600LF34TH | 3/4" BRASS PEX T-HANDLE BALL VALVE | 10 | 60 | \$ 16.89 |

▶▶▶ NOW AVAILABLE IN STOCK



| PART # | MODEL # | DESCRIPTION / SIZE | INNER CARTON QTY. | MASTER CARTON QTY. | LIST PRICE |
|---|-----------------|------------------------------------|-------------------|--------------------|------------|
| BRASS T-HANDLE BALL VALVES (F1960 PEX x MIP) | | | | | |
| H50058 | IBVMWP600LF34TH | 3/4" BRASS PEX T-HANDLE BALL VALVE | 10 | 60 | \$ 18.60 |

▶▶▶ NOW AVAILABLE IN STOCK

BALL VALVE EXTENSION HANDLES

- Fits HydraPro IBVT600 and IBVS600 Ball Valves
- Extension Only
- Handle Not Included. Must Use Original Handle.



| PART # | MODEL # | DESCRIPTION / SIZE | INNER CARTON QTY. | MASTER CARTON QTY. | LIST PRICE |
|--|---------|------------------------------------|-------------------|--------------------|------------|
| EXTENSION HANDLE FOR HYDRAPRO IBVT600 & IBVS600 BRASS BALL VALVES | | | | | |
| H50061 | HPBVEH1 | 1/2" BALL VALVE EXTENSION HANDLE | 10 | 100 | \$ 8.86 |
| H50062 | HPBVEH2 | 3/4" BALL VALVE EXTENSION HANDLE | 10 | 100 | \$ 9.57 |
| H50063 | HPBVEH3 | 1" BALL VALVE EXTENSION HANDLE | 5 | 50 | \$ 13.05 |
| H50064 | HPBVEH4 | 1-1/4" BALL VALVE EXTENSION HANDLE | 5 | 50 | \$ 12.17 |
| H50071 | HPBVEH5 | 1-1/2" BALL VALVE EXTENSION HANDLE | 5 | 20 | \$ 20.35 |
| H50072 | HPBVEH6 | 2" BALL VALVE EXTENSION HANDLE | 5 | 20 | \$ 20.69 |

SPECIAL NOTE: Must confirm packaging/date code to ensure fit on the correct generation of ball valves.

MULTIPLIER (IBVL):

BRASS BALL VALVES – HANDLE ONLY

- Fits HydraPro IBVT600 & IBVS600 Brass Ball Valves
- Rubber Handle • Lead Free • Locking Handle Design
- UPC Certified



| PART # | MODEL # | DESCRIPTION / SIZE | INNER CARTON QTY. | MASTER CARTON QTY. | LIST PRICE |
|---|-----------|---|-------------------|--------------------|------------|
| LOCKING HANDLE FOR BRASS BALL VALVES | | | | | |
| H52061 | HPFPBVLH1 | 1/2" LOCKING HANDLE FOR BRASS BALL VALVE | 10 | 100 | \$ 3.69 |
| H52062 | HPFPBVLH2 | 3/4" - 1" LOCKING HANDLE FOR BRASS BALL VALVE | 10 | 100 | \$ 5.21 |
| H52063 | HPFPBVLH3 | 1-1/4" - 2" LOCKING HANDLE FOR BRASS BALL VALVE | 5 | 20 | \$ 8.61 |
| H52064 | HPFPBVLH4 | 2-1/2" LOCKING HANDLE FOR BRASS BALL VALVE | 2 | 8 | \$ 17.25 |
| H52065 | HPFPBVLH5 | 3" LOCKING HANDLE FOR BRASS BALL VALVE | 2 | 8 | \$ 24.05 |
| H52066 | HPFPBVLH6 | 4" LOCKING HANDLE FOR BRASS BALL VALVE | 2 | 8 | \$ 41.73 |

SPECIAL NOTE: Must confirm packaging/date code to ensure fit on the correct generation of ball valves.

▶▶▶ NOW AVAILABLE IN STOCK

BALL VALVE EXTENSION HANDLES

- Fits HydraPro IBVT600 and IBVS600 Ball Valves



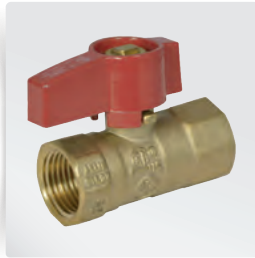
| PART # | MODEL # | DESCRIPTION / SIZE | INNER CARTON QTY. | MASTER CARTON QTY. | LIST PRICE |
|--|----------|---|-------------------|--------------------|------------|
| EXTENSION HANDLE FOR HYDRAPRO IBVT600 & IBVS600 BRASS BALL VALVES | | | | | |
| H51030 | HPBVEH11 | 1/2" & 3/4" BALL VALVE EXTENSION HANDLE | 10 | 100 | \$ 18.58 |
| H51031 | HPBVEH21 | 1" & 1-1/4" BALL VALVE EXTENSION HANDLE | 5 | 50 | \$ 20.74 |
| H51032 | HPBVEH31 | 1-1/2" - 2" BALL VALVE EXTENSION HANDLE | 5 | 20 | \$ 26.34 |

▶▶▶ NOW AVAILABLE IN STOCK

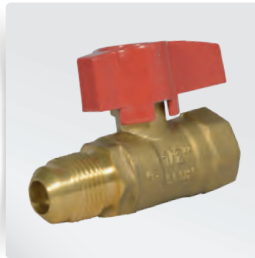
MULTIPLIER (GBV):

GAS BALL VALVES

- CSA and UL Approved • 125 psig
- Two-Piece Construction
- 1/2 psi for Indoor Appliance Connectors per ANSI Z21.15 and CSA 9.1
- 5 PSI for Indoor Shutoff per CGA 91-002 and ASME B16.44



| PART # | MODEL # | DESCRIPTION / SIZE | INNER CARTON QTY. | MASTER CARTON QTY. | LIST PRICE |
|------------------------------------|---------|----------------------------|-------------------|--------------------|------------|
| GAS BALL VALVES (IPS x IPS) | | | | | |
| H50080 | GBV12PP | 1/2" x 1/2" GAS BALL VALVE | 10 | 100 | \$ 7.88 |
| H50084 | GBV34PP | 3/4" x 3/4" GAS BALL VALVE | 10 | 100 | \$ 12.58 |
| H50081 | GBV1PP | 1" x 1" GAS BALL VALVE | 6 | 60 | \$ 21.23 |



| PART # | MODEL # | DESCRIPTION / SIZE | INNER CARTON QTY. | MASTER CARTON QTY. | LIST PRICE |
|---|---------|----------------------------|-------------------|--------------------|------------|
| GAS BALL VALVES (FLARE O.D. x IPS) | | | | | |
| H50083 | GBV32FP | 3/8" x 1/2" GAS BALL VALVE | 10 | 100 | \$ 9.46 |
| H50082 | GBV22FP | 1/2" x 1/2" GAS BALL VALVE | 10 | 100 | \$ 9.53 |



| PART # | MODEL # | DESCRIPTION / SIZE | INNER CARTON QTY. | MASTER CARTON QTY. | LIST PRICE |
|--|---------|----------------------------|-------------------|--------------------|------------|
| GAS BALL VALVES (FLARE O.D. x FLARE O.D.) | | | | | |
| H50085 | GBV33FF | 3/8" x 3/8" GAS BALL VALVE | 10 | 100 | \$ 10.36 |
| H50086 | GBV22FF | 1/2" x 1/2" GAS BALL VALVE | 10 | 100 | \$ 10.49 |



| PART # | MODEL # | DESCRIPTION / SIZE | INNER CARTON QTY. | MASTER CARTON QTY. | LIST PRICE |
|--|------------|-----------------------------------|-------------------|--------------------|------------|
| GAS BALL VALVES with SIDE TAP (FIP x FIP) | | | | | |
| H50078 | GBV12PPTAP | 1/2" GAS BALL VALVE with SIDE TAP | 10 | 100 | \$ 10.78 |
| H50079 | GBV34PPTAP | 3/4" GAS BALL VALVE with SIDE TAP | 10 | 100 | \$ 16.46 |

MULTIPLIER (PBV):

PVC BALL VALVES

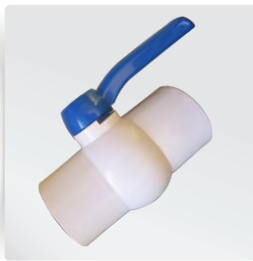
- SCH. 40
- EPDM Seats and O-Rings
- Impact Resistant
- Blue Handle
- **Working Pressure: 150 PSI**
- Valves **ARE NOT** NSF Approved



| PART # | MODEL # | DESCRIPTION / SIZE | INNER CARTON QTY. | MASTER CARTON QTY. | LIST PRICE |
|--|----------|---|-------------------|--------------------|------------|
| THREADED PVC BALL VALVE - SCH. 40 | | | | | |
| H51074 | THD4012 | 1/2" x 1/2" THREADED PVC BALL VALVE | 24 | 240 | \$ 4.94 |
| H51075 | THD4034 | 3/4" x 3/4" THREADED PVC BALL VALVE | 20 | 200 | \$ 5.96 |
| H51076 | THD401 | 1" x 1" THREADED PVC BALL VALVE | 10 | 100 | \$ 9.83 |
| H51078 | THD40112 | 1-1/2" x 1-1/2" THREADED PVC BALL VALVE | 5 | 40 | \$ 17.93 |
| H51079 | THD402 | 2" x 2" THREADED PVC BALL VALVE | 3 | 24 | \$ 25.69 |



| PART # | MODEL # | DESCRIPTION / SIZE | INNER CARTON QTY. | MASTER CARTON QTY. | LIST PRICE |
|--|---------|---|-------------------|--------------------|------------|
| SOLVENT WELD PVC BALL VALVE - SCH. 40 | | | | | |
| H51065 | SW4012 | 1/2" x 1/2" SOLVENT WELD BALL VALVE | 24 | 240 | \$ 3.96 |
| H51066 | SW4034 | 3/4" x 3/4" SOLVENT WELD BALL VALVE | 20 | 200 | \$ 5.10 |
| H51067 | SW401 | 1" x 1" SOLVENT WELD BALL VALVE | 10 | 100 | \$ 7.24 |
| H51068 | SW40114 | 1-1/4" x 1-1/4" SOLVENT WELD BALL VALVE | 8 | 64 | \$ 10.67 |
| H51069 | SW40112 | 1-1/2" x 1-1/2" SOLVENT WELD BALL VALVE | 5 | 40 | \$ 14.80 |
| H51070 | SW402 | 2" x 2" SOLVENT WELD BALL VALVE | 3 | 24 | \$ 18.69 |
| H51071 | SW40212 | 2-1/2" x 2-1/2" SOLVENT WELD BALL VALVE | 1 | 12 | \$ 63.15 |
| H51072 | SW403 | 3" x 3" SOLVENT WELD BALL VALVE | 1 | 9 | \$ 91.86 |
| H51073 | SW404 | 4" x 4" SOLVENT WELD BALL VALVE | 1 | 6 | \$ 163.05 |



MULTIPLIER (CPVB):

CPVC BALL VALVES

- CPVC CTS Ball Valves
- Full Port
- Blue Handle
- **Max Working Pressure: 100 PSI @ 180° F**



| PART # | MODEL # | DESCRIPTION / SIZE | INNER CARTON QTY. | MASTER CARTON QTY. | LIST PRICE |
|-------------------------------------|------------|---|-------------------------|--------------------------|---------------|
| SOLVENT WELD CPVC BALL VALVE | | | | | |
| H50065 | STDSW4712 | 1/2" x 1/2" SOLVENT WELD BALL VALVE | 1 | 100 | \$ 8.44 |
| H50066 | STDSW4734 | 3/4" x 3/4" SOLVENT WELD BALL VALVE | 1 | 100 | \$ 9.61 |
| H50067 | STDSW471 | 1" x 1" SOLVENT WELD BALL VALVE | 1 | 100 | \$ 14.39 |
| H50068 | STDSW47114 | 1-1/4" x 1-1/4" SOLVENT WELD BALL VALVE | 1 | 32 | \$ 41.23 |
| H50069 | STDSW47112 | 1-1/2" x 1-1/2" SOLVENT WELD BALL VALVE | 1 | 24 | \$ 51.82 |
| H50070 | STDSW472 | 2" x 2" SOLVENT WELD BALL VALVE | 1 | 16 | \$ 66.99 |