

PRICE LIST

MULTIPLIER (x)

STOP VALVE **MULTIPLIER (STOP):**

APPLIANCE CONNECTOR & SUPPLY LINES **MULTIPLIER (SWC):**

PEX RISER & SMALL DIAMETER TUBE **MULTIPLIER (PEXT):**

ESCUTCHEON **MULTIPLIER (ESCU):**

ADD-AN-OUTLET ADAPTER **MULTIPLIER (HPV):**



STOPS & SUPPLIES

PRICE SHEET: H05.SANDS.0522

EFFECTIVE: **05.02.22**

REVISION: **01.15.24**

TABLE OF CONTENTS

1/4 TURN ANGLE SUPPLY STOPS

PAGES 1 - 3

COMPRESSION INLET	PAGE 1
3-WAY COMPRESSION INLET	PAGE 1
CPVC INLET	PAGE 1
PEX INLET	PAGE 1
F1960 PEX INLET x COMPRESSION OUTLET	PAGE 2
IPS INLET	PAGE 2
SWEAT INLET	PAGE 2
PUSH FIT INLET	PAGE 2
PRESS INLET 	PAGE 3

1/4 TURN STRAIGHT SUPPLY STOPS

PAGES 4 - 5

COMPRESSION INLET	PAGE 4
CPVC INLET	PAGE 4
PEX INLET	PAGE 4
F1960 PEX INLET x COMPRESSION OUTLET	PAGE 4
IPS INLET	PAGE 5
PUSH FIT INLET	PAGE 5
PRESS INLET 	PAGE 5

MULTI TURN ANGLE STOP VALVES

PAGES 6 - 7

COMPRESSION INLET	PAGE 6
3-WAY DUAL HANDLE COMPRESSION INLET	PAGE 6
CPVC INLET	PAGE 6
PEX INLET	PAGE 7
IPS INLET	PAGE 7
SWEAT INLET	PAGE 7

MULTI TURN STRAIGHT STOP VALVES

PAGE 8

COMPRESSION INLET	PAGE 8
CPVC INLET	PAGE 8
PEX INLET	PAGE 8
IPS INLET	PAGE 8

ADD-AN-OUTLET ADAPTER

PAGE 9

ADD-AN-OUTLET ADAPTERS 	PAGE 9
--	--------

APPLIANCE CONNECTORS

PAGES 10 - 11

DISHWASHER CONNECTORS	PAGE 10
DISHWASHER ELBOWS	PAGE 10
ICEMAKER CONNECTOR	PAGE 11
WASHING MACHINE CONNECTOR	PAGE 11

STAINLESS STEEL FLEXIBLE SUPPLY LINES

PAGES 12 - 14

CLOSET SUPPLY LINE 7/8" BALLCOCK x 1/2" FIP	PAGE 12
CLOSET SUPPLY LINE with PLASTIC NUT	PAGE 12
LAVATORY SUPPLY LINE 3/8" COMP. x 3/8" COMP.	PAGE 13
LAVATORY SUPPLY LINE 1/2" FIP x 3/8" COMP.	PAGE 13
LAVATORY SUPPLY LINE 1/2" FIP x 1/2" FIP	PAGE 13
LAVATORY SUPPLY LINE DELTA STYLE	PAGE 13
LAVATORY RISER	PAGE 14
CLOSET RISER	PAGE 14
POLY FERRULE	PAGE 14
SMALL DIAMETER PEX TUBING	PAGE 14

ESCUTCHEONS

PAGES 15 - 20

CTS TUBULAR SIZE POLY. ESCUTCHEON (WHITE)	PAGE 15
IPS SIZE POLY. ESCUTCHEON (WHITE)	PAGE 15
NON-BREAKABLE CTS TUBULAR SIZE POLY. ESCUTCHEON (WHITE)	PAGE 15
NON-BREAKABLE IPS SIZE POLY. ESCUTCHEON (WHITE)	PAGE 15
CTS TUBULAR SIZE SURE GRIP STEEL ESCUTCHEON (CHROME)	PAGE 16
IPS SIZE SURE GRIP STEEL ESCUTCHEON (CHROME)	PAGE 16
NON-BREAKABLE CTS TUBULAR SIZE PLASTIC ESCUTCHEON (CHROME FINISH)	PAGE 17
IPS SIZE PLASTIC ESCUTCHEON (CHROME FINISH)	PAGE 17
CTS TUBULAR SIZE STEEL BOX ESCUTCHEON (CHROME PLATED)	PAGE 18
IPS SIZE PLASTIC STEEL BOX ESCUTCHEON (CHROME PLATED)	PAGE 18
CTS TUBULAR SIZE STEEL BELL ESCUTCHEON (CHROME PLATED)	PAGE 18
IPS SIZE PLASTIC STEEL BELL ESCUTCHEON (CHROME PLATED)	PAGE 18
CTS TUBULAR SIZE STEEL FLOOR & CEILING ESCUTCHEON PLATES (CHROME PLATED)	PAGE 19
IPS SIZE PLASTIC STEEL FLOOR & CEILING ESCUTCHEON PLATES (CHROME PLATED)	PAGE 19
HEAVY DUTY CTS TUBULAR SIZE STEEL FLOOR & CEILING ESCUTCHEON PLATES (CHROME PLATED)	PAGE 20
HEAVY DUTY IPS SIZE PLASTIC STEEL FLOOR & CEILING ESCUTCHEON PLATES (CHROME PLATED)	PAGE 20

TOILET

ACCESSORIES KITS

PAGES 21 - 25

Toilet Accessories Kits (COMP. CPVC, F1807 & F1960 PEX)	PAGE 21-25
---	------------



FOR CALIFORNIA CONSUMERS WARNING:

This product can expose you to chemicals including lead compounds, which are known to the State of California to cause cancer and birth defects or other reproductive harm. **For more information go to www.P65Warnings.ca.gov**

www.hydrapro.biz | (877) 813-2333 | Fax (800) 642-2655

Atlanta (GA) • Dallas (TX) • Houston (TX) • Pompano Beach (FL) • Jackson (MI) • Columbus (OH)

MULTIPLIER (STOP):

1/4 TURN ANGLE SUPPLY STOPS

- Chrome Plated Brass
- Internal Brass Ball
- Teflon Seats
- Individually Bagged and Barcoded
- cUPC Approved and Lead-Free



****COMPRESSION INLET VALVES ARE FOR COPPER TUBE USE ONLY****



PART #	MODEL #	DESCRIPTION (SIZE)	INNER CASE QUANTITY	MASTER CARTON QUANTITY	LIST PRICE
COMPRESSION INLET					
H49000	HPQTLFCOMPAS	5/8" OD x 3/8" OD	24	96	\$ 14.47



PART #	MODEL #	DESCRIPTION (SIZE)	INNER CASE QUANTITY	MASTER CARTON QUANTITY	LIST PRICE
3-WAY COMPRESSION INLET (INLET x OUTLET x OUTLET)					
H49017	HPQTLF583814AS	5/8" OD x 3/8" OD x 1/4" OD	24	96	\$ 35.37
H49010	HPQTLF583838AS	5/8" OD x 3/8" OD x 3/8" OD	24	96	\$ 35.37



PART #	MODEL #	DESCRIPTION (SIZE)	INNER CASE QUANTITY	MASTER CARTON QUANTITY	LIST PRICE
CPVC INLET					
H49002	HPQTLFCPVCAS	1/2" CPVC x 3/8" OD	24	96	\$ 17.95



PART #	MODEL #	DESCRIPTION (SIZE)	INNER CASE QUANTITY	MASTER CARTON QUANTITY	LIST PRICE
PEX INLET					
H49006	HPQTLFPEXAS	1/2" PEX x 3/8" OD	24	96	\$ 13.35

*Lead Free refers to the wetted surface of pipe, fittings and fixtures in potable water systems that have a weighted average lead content ≤ 0.25% per the Safe Drinking Water Act (Sec. 1417) amended 1-4-2011 and other equivalent state regulations.



MULTIPLIER (STOP):

1/4 TURN ANGLE SUPPLY STOPS

- Chrome Plated Brass
- Internal Brass Ball
- Teflon Seats
- Individually Bagged and Barcoded
- cUPC Approved and Lead-Free



****COMPRESSION INLET VALVES ARE FOR COPPER TUBE USE ONLY****



PART #	MODEL #	DESCRIPTION (SIZE)	INNER CASE QUANTITY	MASTER CARTON QUANTITY	LIST PRICE
F1960 PEX INLET x COMPRESSION OUTLET					
H49008	HPQTLF1960AS	1/2" PEX x 3/8" OD	24	96	\$ 20.35



PART #	MODEL #	DESCRIPTION (SIZE)	INNER CASE QUANTITY	MASTER CARTON QUANTITY	LIST PRICE
IPS INLET					
H49011	HPQTLFIPSAS	1/2" FIP x 3/8" OD	24	96	\$ 14.02



PART #	MODEL #	DESCRIPTION (SIZE)	INNER CASE QUANTITY	MASTER CARTON QUANTITY	LIST PRICE
SWEAT INLET					
H49016	HPQTLFSWEATAS	1/2" SWEAT x 3/8" OD	24	96	\$ 14.88



PART #	MODEL #	DESCRIPTION (SIZE)	INNER CASE QUANTITY	MASTER CARTON QUANTITY	LIST PRICE
PUSH FIT INLET					
H49013	HPQTLFPFAS1214	1/2" PUSH FIT x 1/4" OD	24	96	\$ 15.16
H49014	HPQTLFPFAS1238	1/2" PUSH FIT x 3/8" OD	24	96	\$ 16.10

*Lead Free refers to the wetted surface of pipe, fittings and fixtures in potable water systems that have a weighted average lead content ≤ 0.25% per the Safe Drinking Water Act (Sec. 1417) amended 1-4-2011 and other equivalent state regulations.

MULTIPLIER (STOP):

1/4 TURN ANGLE SUPPLY STOPS

- Chrome Plated Brass
- Internal Brass Ball
- Teflon Seats
- Individually Bagged and Barcoded
- cUPC Approved and Lead-Free



NEW!



PART #	MODEL #	DESCRIPTION (SIZE)	INNER CASE QUANTITY	MASTER CARTON QUANTITY	LIST PRICE
PRESS INLET					
H49019	HPQTLFPRESSAS	1/2" PRESS x 3/8" OD ANGLE STOP VALVE	24	96	\$ 15.70

NOW AVAILABLE IN STOCK

MULTIPLIER (STOP):

1/4 TURN STRAIGHT SUPPLY STOPS

- Chrome Plated Brass
- Internal Brass Ball
- Teflon Seats
- Individually Bagged and Barcoded
- cUPC Approved and Lead-Free



****COMPRESSION INLET VALVES ARE FOR COPPER TUBE USE ONLY****



PART #	MODEL #	DESCRIPTION (SIZE)	INNER CASE QUANTITY	MASTER CARTON QUANTITY	LIST PRICE
COMPRESSION INLET					
H49001	HPQTLFCOMPSS	5/8" OD x 3/8" OD	24	96	\$ 14.47



PART #	MODEL #	DESCRIPTION (SIZE)	INNER CASE QUANTITY	MASTER CARTON QUANTITY	LIST PRICE
CPVC INLET					
H49003	HPQTLFCPVCSS	1/2" CPVC x 3/8" OD	24	96	\$ 17.95



PART #	MODEL #	DESCRIPTION (SIZE)	INNER CASE QUANTITY	MASTER CARTON QUANTITY	LIST PRICE
PEX INLET					
H49007	HPQTLFPEXSS	1/2" PEX x 3/8" OD	24	96	\$ 13.35

*Lead Free refers to the wetted surface of pipe, fittings and fixtures in potable water systems that have a weighted average lead content ≤ 0.25% per the Safe Drinking Water Act (Sec. 1417) amended 1-4-2011 and other equivalent state regulations.



PART #	MODEL #	DESCRIPTION (SIZE)	INNER CASE QUANTITY	MASTER CARTON QUANTITY	LIST PRICE
F1960 PEX INLET x COMPRESSION OUTLET					
H49009	HPQTLF1960SS	1/2" PEX x 3/8" OD	24	96	\$ 20.35

MULTIPLIER (STOP):

1/4 TURN STRAIGHT SUPPLY STOPS

- Chrome Plated Brass
- Internal Brass Ball
- Teflon Seats
- Individually Bagged and Barcoded
- cUPC Approved and Lead-Free



****COMPRESSION INLET VALVES ARE FOR COPPER TUBE USE ONLY****



PART #	MODEL #	DESCRIPTION (SIZE)	INNER CASE QUANTITY	MASTER CARTON QUANTITY	LIST PRICE
IPS INLET					
H49012	HPQTLFIPSSS	1/2" FIP x 3/8" OD	24	96	\$ 14.02



PART #	MODEL #	DESCRIPTION (SIZE)	INNER CASE QUANTITY	MASTER CARTON QUANTITY	LIST PRICE
PUSH FIT INLET					
H49018	HPQTLFPFSS1214	1/2" PUSH FIT x 1/4" OD	24	96	\$ 15.16
H49015	HPQTLFPFSS1238	1/2" PUSH FIT x 3/8" OD	24	96	\$ 16.10



PART #	MODEL #	DESCRIPTION (SIZE)	INNER CASE QUANTITY	MASTER CARTON QUANTITY	LIST PRICE
PRESS INLET					
H49020	HPQTLFPRESSSS	1/2" PRESS x 3/8" OD STRAIGHT STOP VALVE	24	96	\$ 15.81

NOW AVAILABLE IN STOCK

MULTIPLIER (STOP):

MULTI-TURN ANGLE STOP VALVES

- Chrome Plated Brass
- EPDM Rubber Seal
- Individually Bagged and Barcoded
- cUPC Approved and Lead-Free



****COMPRESSION INLET VALVES ARE FOR COPPER TUBE USE ONLY****



PART #	MODEL #	DESCRIPTION (SIZE)	INNER CASE QUANTITY	MASTER CARTON QUANTITY	LIST PRICE
COMPRESSION INLET					
H48000	HPMTLFCOMPAS	5/8" OD x 3/8" OD	24	96	\$ 10.81
H48011	HPMTLFCOMPASRB	5/8" OD x 3/8" OD ROUGH BRASS FINISH	24	96	\$ 10.95



PART #	MODEL #	DESCRIPTION (SIZE)	INNER CASE QUANTITY	MASTER CARTON QUANTITY	LIST PRICE
3-WAY DUAL HANDLE COMPRESSION INLET (INLET x OUTLET x OUTLET)					
H48004	HPMTLFDHCOMPASCP	5/8" OD x 3/8" OD x 3/8" OD	24	96	\$ 32.17
H48005	HPMTLFDHCOMPASRB	5/8" OD x 3/8" OD x 3/8" OD ROUGH BRASS FINISH	24	96	\$ 30.02



PART #	MODEL #	DESCRIPTION (SIZE)	INNER CASE QUANTITY	MASTER CARTON QUANTITY	LIST PRICE
CPVC INLET					
H48002	HPMTLFCPVCAS	1/2" CPVC x 3/8" OD	24	96	\$ 16.99

MULTIPLIER (STOP):

MULTI-TURN ANGLE STOP VALVES

- Chrome Plated Brass
- EPDM Rubber Seal
- Individually Bagged and Barcoded
- cUPC Approved and Lead-Free



****COMPRESSION INLET VALVES ARE FOR COPPER TUBE USE ONLY****



PART #	MODEL #	DESCRIPTION (SIZE)	INNER CASE QUANTITY	MASTER CARTON QUANTITY	LIST PRICE
PEX INLET					
H48006	HPMTLFPEXAS	1/2" PEX x 3/8" OD	24	96	\$ 11.06



PART #	MODEL #	DESCRIPTION (SIZE)	INNER CASE QUANTITY	MASTER CARTON QUANTITY	LIST PRICE
IPS INLET					
H48008	HPMTLFIPSAS	1/2" FIP x 3/8" OD	24	96	\$ 10.36



PART #	MODEL #	DESCRIPTION (SIZE)	INNER CASE QUANTITY	MASTER CARTON QUANTITY	LIST PRICE
SWEAT INLET					
H48010	HPMTLFSWTAS	1/2" SWEAT x 3/8" OD	24	96	\$ 11.40

MULTIPLIER (STOP):

MULTI-TURN STRAIGHT STOP VALVES

- Chrome Plated Brass
- EPDM Rubber Seal
- Individually Bagged and Barcoded
- cUPC Approved and Lead-Free



****COMPRESSION INLET VALVES ARE FOR COPPER TUBE USE ONLY****



PART #	MODEL #	DESCRIPTION (SIZE)	INNER CASE QUANTITY	MASTER CARTON QUANTITY	LIST PRICE
COMPRESSION INLET					
H48001	HPMTLFCOMPSS	5/8" OD x 3/8" OD	24	96	\$ 14.50



PART #	MODEL #	DESCRIPTION (SIZE)	INNER CASE QUANTITY	MASTER CARTON QUANTITY	LIST PRICE
CPVC INLET					
H48003	HPMTLFCPVCSS	1/2" CPVC x 3/8" OD	24	96	\$ 19.17



PART #	MODEL #	DESCRIPTION (SIZE)	INNER CASE QUANTITY	MASTER CARTON QUANTITY	LIST PRICE
PEX INLET					
H48007	HPMTLFPEXSS	1/2" PEX x 3/8" OD	24	96	\$ 14.52



PART #	MODEL #	DESCRIPTION (SIZE)	INNER CASE QUANTITY	MASTER CARTON QUANTITY	LIST PRICE
IPS INLET					
H48009	HPMTLFIPSSS	1/2" FIP x 3/8" OD	24	96	\$ 13.52

MULTIPLIER (STOP):

ADD-AN-OUTLET ADAPTERS

- Lead-Free Brass Construction
- Screws on existing angle or straight supply stop and converts it to a dual stop



PART #	MODEL #	DESCRIPTION (SIZE)	INNER CASE QUANTITY	MASTER CARTON QUANTITY	LIST PRICE
ADD-AN-OUTLET ADAPTER					
H49030	HPAA0A383814	3/8" OD x 3/8" OD x 1/4" OD	10	200	\$ 11.03

NOW IN STOCK



PART #	MODEL #	DESCRIPTION (SIZE)	INNER CASE QUANTITY	MASTER CARTON QUANTITY	LIST PRICE
ADD-AN-OUTLET ADAPTER					
H49040	HPAA0A38	3/8" OD x 3/8" OD x 3/8" OD	10	200	\$ 11.47

NOW IN STOCK

MULTIPLIER (SWC):



APPLIANCE CONNECTORS

- PVC Reinforced Inner Core Hose
- Braided Type 304 Stainless Steel
- Chrome Plated Brass Nut
- Stainless Steel Ferrule
- Universal fit: Includes 3/8" COMP. x 3/8" MIP and 3/8" COMP. x 3/4" FHT Elbows
- Individually Bagged and Barcoded



PART #	MODEL #	DESCRIPTION (SIZE)	INNER CASE QUANTITY	MASTER CARTON QUANTITY	LIST PRICE
DISHWASHER CONNECTOR					
H28010	M1D60	3/8" COMP. x 3/8" COMP. OR 3/4" FHT x 60"	1	12	\$ 20.48
H28030	M1D72	3/8" COMP. x 3/8" COMP. OR 3/4" FHT x 72"	1	12	\$ 22.33



DISHWASHER CONNECTOR WITH 3/4" FHT ELBOW ATTACHED					
H28011	M1D60W	3/8" COMP. x 3/4" FHT x 60"	1	12	\$ 15.37

*Lead Free refers to the wetted surface of pipe, fittings and fixtures in potable water systems that have a weighted average lead content ≤ 0.25% per the Safe Drinking Water Act (Sec. 1417) ammended 1-4-2011 and other equivalent state regulations.

DISHWASHER ELBOWS

- For Dishwashers with MHT Inlets
- 3/4" FHT x 3/8" OD Tube
- Swivel Hose Threads
- Lead-Free



PART #	MODEL #	DESCRIPTION (SIZE)	INNER CASE QUANTITY	MASTER CARTON QUANTITY	LIST PRICE
DISHWASHER ELBOW WITH NUT AND SLEEVE					
H20086	HPDWE3438	3/4" FHT x 3/8" COMP. DISHWASHER ELBOW	5	200	\$ 6.89

MULTIPLIER (SWC):



APPLIANCE CONNECTORS

- PVC Reinforced Inner Core Hose
- Braided Type 304 Stainless Steel
- Stainless Steel Ferrule
- Chrome Plated Brass Nut
- Individually Bagged and Barcoded



PART #	MODEL #	DESCRIPTION (SIZE)	INNER CASE QUANTITY	MASTER CARTON QUANTITY	LIST PRICE
ICEMAKER CONNECTOR					
H28012	M1M12	1/4" COMP. x 1/4" COMP. x 12" NEW!	1	12	\$ 6.45
H28016	M1M60	1/4" COMP. x 1/4" COMP. x 60"	1	12	\$ 16.06
H28017	M1M72	1/4" COMP. x 1/4" COMP. x 72"	1	12	\$ 17.64
H28015	M1M120	1/4" COMP. x 1/4" COMP. x 120"	1	12	\$ 21.93

- PVC Reinforced Inner Core Hose
- Braided Type 304 Stainless Steel
- Stainless Steel Ferrule
- Chrome Plated Brass Nuts
- Individually Labeled and Barcoded



PART #	MODEL #	DESCRIPTION (SIZE)	INNER CASE QUANTITY	MASTER CARTON QUANTITY	LIST PRICE
WASHING MACHINE CONNECTOR					
H28024	M1W48	3/4" FHT x 3/4" FHT x 48"	1	12	\$ 14.53
H28025	M1W60	3/4" FHT x 3/4" FHT x 60"	1	12	\$ 18.86
H28026	M1W72	3/4" FHT x 3/4" FHT x 72"	1	12	\$ 18.86

MULTIPLIER (SWC):

STAINLESS STEEL FLEXIBLE SUPPLY LINES

- PVC Reinforced Inner Core Hose
- Braided Type 304 Stainless Steel
- Stainless Steel Ferrule
- Chrome Plated Brass Wing Nut
- Lead-Free Brass Insert
- Individually Labeled and Barcoded



PART #	MODEL #	DESCRIPTION (SIZE)	INNER CASE QUANTITY	MASTER CARTON QUANTITY	LIST PRICE
CLOSET SUPPLY LINE 7/8" BALLCOCK x 1/2" FIP					
H28042	M3T12	12" CLOSET SUPPLY LINE (BALLCOCK x FIP)	25	100	\$ 7.56

*Lead Free refers to the wetted surface of pipe, fittings and fixtures in potable water systems that have a weighted average lead content $\leq 0.25\%$ per the Safe Drinking Water Act (Sec. 1417) ammended 1-4-2011 and other equivalent state regulations.

MULTIPLIER (SWC):

CLOSET SUPPLY LINES with PLASTIC NUT

- PVC Reinforced Inner Core Hose
- Braided Type 304 Stainless Steel
- Plastic Nut
- Stainless Steel Ferrule
- Lead-Free Brass Insert
- 7/8" Ballcock x 3/8" Comp.



PART #	MODEL #	DESCRIPTION (SIZE)	INNER CASE QUANTITY	MASTER CARTON QUANTITY	LIST PRICE
CLOSET SUPPLY CONNECTORS WITH PLASTIC NUT, 7/8" BALLCOCK X 3/8" COMP.					
H28049	M1T9P	9" CLOSET SUPPLY LINE (BALLCOCK x COMP.)	25	100	\$ 5.21
H28050	M1T12P	12" CLOSET SUPPLY LINE (BALLCOCK x COMP.)	25	100	\$ 6.38
H28051	M1T16P	16" CLOSET SUPPLY LINE (BALLCOCK x COMP.)	25	100	\$ 7.22
H28052	M1T20P	20" CLOSET SUPPLY LINE (BALLCOCK x COMP.)	25	100	\$ 8.22

MULTIPLIER (SWC):



STAINLESS STEEL FLEXIBLE SUPPLY LINES

- PVC Reinforced Inner Core Hose
- Braided Type 304 Stainless Steel
- Stainless Steel Ferrule
- Chrome Plated Brass Nut
- Lead-Free Brass Insert
- Individually Labeled and Barcoded



PART #	MODEL #	DESCRIPTION (SIZE)	INNER CASE QUANTITY	MASTER CARTON QUANTITY	LIST PRICE
LAVATORY SUPPLY LINE 3/8" COMP. x 3/8" COMP.					
H28018	M2F12	12" LAVATORY SUPPLY LINE (COMP. x COMP.)	25	100	\$ 5.20
H28019	M2F16	16" LAVATORY SUPPLY LINE (COMP. x COMP.)	25	100	\$ 5.89
H28020	M2F20	20" LAVATORY SUPPLY LINE (COMP. x COMP.)	25	100	\$ 6.23
H28021	M2F24	24" LAVATORY SUPPLY LINE (COMP. x COMP.)	25	100	\$ 6.89
H28022	M2F30	30" LAVATORY SUPPLY LINE (COMP. x COMP.)	25	100	\$ 8.60



LAVATORY SUPPLY LINE 1/2" FIP x 3/8" COMP.					
H28039	M1F9	9" LAVATORY SUPPLY LINE (FIP x COMP.)	25	100	\$ 6.09
H28031	M1F12	12" LAVATORY SUPPLY LINE (FIP x COMP.)	25	100	\$ 7.17
H28033	M1F16	16" LAVATORY SUPPLY LINE (FIP x COMP.)	25	100	\$ 7.84
H28034	M1F20	20" LAVATORY SUPPLY LINE (FIP x COMP.)	25	100	\$ 7.51
H28036	M1F24	24" LAVATORY SUPPLY LINE (FIP x COMP.)	25	100	\$ 8.37
H28037	M1F30	30" LAVATORY SUPPLY LINE (FIP x COMP.)	25	100	\$ 10.98
H28038	M1F36	36" LAVATORY SUPPLY LINE (FIP x COMP.)	25	100	\$ 9.83



LAVATORY SUPPLY LINE 1/2" FIP x 1/2" FIP					
H28041	M3F12	12" LAVATORY SUPPLY LINE (FIP x FIP)	25	100	\$ 5.53
H28040	M3F20	20" LAVATORY SUPPLY LINE (FIP x FIP)	25	100	\$ 9.67



LAVATORY SUPPLY LINE (DELTA STYLE) 3/8" OD x 3/8" COMP.					
H28032	M1F12D	12" LAVATORY SUPPLY LINE (DELTA STYLE)	25	100	\$ 6.52
H28035	M1F20D	20" LAVATORY SUPPLY LINE (DELTA STYLE)	25	100	\$ 7.72

*Lead Free refers to the wetted surface of pipe, fittings and fixtures in potable water systems that have a weighted average lead content $\leq 0.25\%$ per the Safe Drinking Water Act (Sec. 1417) ammended 1-4-2011 and other equivalent state regulations.

MULTIPLIER (PEXT):

PEX RISERS

- NSF Standard 61 & 14, ASTM F876-04 & F877-05 • Poly Ferrules are Included
- ASME Standard: Flexible Water Connectors - A112.18.6



PART #	MODEL #	DESCRIPTION (SIZE)	MASTER CARTON QUANTITY	LIST PRICE
LAVATORY RISER				
H28060	PEXLAV3812	3/8" x 12" LAVATORY RISER	100	\$ 1.75
H28061	PEXLAV3812W	3/8" x 12" LAVATORY RISER (WHITE)	100	\$ 1.78
H28062	PEXLAV3820	3/8" x 20" LAVATORY RISER	100	\$ 2.40
H28063	PEXLAV3820W	3/8" x 20" LAVATORY RISER (WHITE)	100	\$ 2.49
H28064	PEXLAV3830	3/8" x 30" LAVATORY RISER	100	\$ 3.14
H28065	PEXLAV3830W	3/8" x 30" LAVATORY RISER (WHITE)	100	\$ 3.40
H28066	PEXLAV3836	3/8" x 36" LAVATORY RISER	100	\$ 3.77
H28067	PEXLAV3836W	3/8" x 36" LAVATORY RISER (WHITE)	100	\$ 4.05
CLOSET RISER				
H28068	PEXCLO3812	3/8" x 12" CLOSET RISER	100	\$ 1.75
H28069	PEXCLO3812W	3/8" x 12" CLOSET RISER (WHITE)	100	\$ 1.87
H28070	PEXCLO3820	3/8" x 20" CLOSET RISER	100	\$ 2.40
H28071	PEXCLO3820W	3/8" x 20" CLOSET RISER (WHITE)	100	\$ 2.49
POLY FERRULE				
H28072	PEX82222	3/8" POLY FERRULE	100	\$ 0.18

* We Ship Master Carton Quantities Only

SMALL DIAMETER PEX TUBING

- NSF Standard 61 & 14, ASTM F876-04 & F877-05 • Poly Ferrule NOT Included
- ASME Standard: Flexible Water Connectors - A112.18.6



PART #	MODEL #	DESCRIPTION (SIZE)	MASTER CARTON QUANTITY	LIST PRICE
SMALL DIAMETER PEX TUBING				
H28073	PXC18100	1/8" ID (1/4" OD) ICEMAKER TUBING	100	\$ 0.60
H28074	PXC14100	1/4" ID (3/8" OD) RISER TUBING	100	\$ 0.83
H28075	PXC38100	3/8" ID (1/2" OD) MANIFOLD TUBING	100	\$ 0.94



MULTIPLIER (ESCU):

ESCUTCHEONS

- 100% Rust Proof
- Split for Pre-Piped Jobs
- Tough Durable Plastic
- White Polyethylene



PART #	MODEL #	DESCRIPTION (SIZE)	INNER SLEEVE QUANTITY	MASTER CARTON QUANTITY	LIST PRICE
CTS (TUBULAR SIZE)					
H22550	HP9202SW	5/8" OD	25	500	\$ 0.38
H22551	HP9203SW	7/8" OD	25	500	\$ 0.40
H22552	HP9204SW	1-1/8" OD	25	500	\$ 0.49
H22553	HP9206SW	1-5/8" OD	25	500	\$ 0.56
IPS SIZE					
H22543	HP9211SW	3/8" IPS	25	500	\$ 0.38
H22544	HP9212SW	1/2" IPS	25	500	\$ 0.40
H22545	HP9213SW	3/4" IPS	25	500	\$ 0.42
H22546	HP9214SW	1" IPS	25	500	\$ 0.53
H22547	HP9215SW	1-1/4" IPS	25	500	\$ 0.56
H22548	HP9216SW	1-1/2" IPS	25	500	\$ 0.59
H22549	HP9217SW	2" IPS	25	500	\$ 0.60



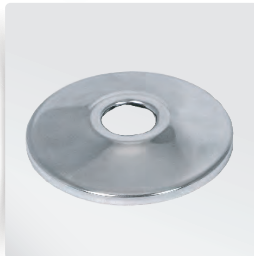
PART #	MODEL #	DESCRIPTION (SIZE)	INNER SLEEVE QUANTITY	MASTER CARTON QUANTITY	LIST PRICE
CTS (TUBULAR SIZE)					
H22508	HP9202W	5/8" OD	25	500	\$ 0.26
H22509	HP9203W	7/8" OD	25	500	\$ 0.28
IPS SIZE					
H22510	HP9216W	1-1/2" IPS	25	500	\$ 0.54
H22511	HP9217W	2" IPS	25	500	\$ 0.57

- 100% Rust Proof
- Non-Breakable
- Tough Durable Plastic
- White Polyethylene



ESCUTCHEONS

- Chrome Plated Steel
- Sure Grip



PART #	MODEL #	DESCRIPTION (SIZE)	INNER SLEEVE QUANTITY	MASTER CARTON QUANTITY	LIST PRICE
CTS (TUBULAR SIZE)					
H22512	HP9201CS	1/2" OD	25	500	\$ 0.35
H22503	HP9202CS	5/8" OD	25	500	\$ 0.35
H22504	HP9203CS	7/8" OD	25	500	\$ 0.35
H22513	HP9204CS	1-1/8" OD	25	500	\$ 0.59
H22520	HP9218CS	1-1/4" OD	25	500	\$ 0.35
H22514	HP9205CS	1-3/8" OD	25	500	\$ 0.63
H22521	HP9219CS	1-1/2" OD	25	500	\$ 0.51
H22515	HP9206CS	1-5/8" OD	25	500	\$ 0.65
H22522	HP9220CS	2" OD	25	500	\$ 0.96
IPS SIZE					
H22505	HP9208CS	3/8" IPS	25	500	\$ 0.35
H22506	HP9209CS	1/2" IPS	25	500	\$ 0.35
H22516	HP9213CS	3/4" IPS	25	500	\$ 0.36
H22517	HP9214CS	1" IPS	25	500	\$ 0.52
H22518	HP9215CS	1-1/4" IPS	25	500	\$ 0.60
H22507	HP9216CS	1-1/2" IPS	25	500	\$ 0.59
H22519	HP9217CS	2" IPS	25	500	\$ 0.89

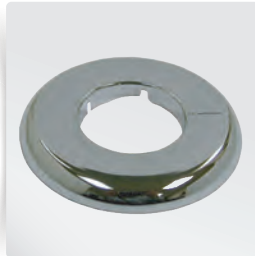
MULTIPLIER (ESCU):

ESCUTCHEONS

- 100% Rust Proof
- Split for Pre-Piped Jobs
- Tough Durable Plastic
- Chrome Finish
- Non-Breakable



PART #	MODEL #	DESCRIPTION (SIZE)	INNER SLEEVE QUANTITY	MASTER CARTON QUANTITY	LIST PRICE
CTS (TUBULAR SIZE)					
H22500	HP9202C	5/8" OD	25	500	\$ 0.98
H22501	HP9203C	7/8" OD	25	500	\$ 1.04
H22539	HP9204C	1-1/8" OD	25	500	\$ 1.06
H22540	HP9205C	1-3/8" OD	25	500	\$ 1.19
H22541	HP9206C	1-5/8" OD	25	500	\$ 1.42
H22542	HP9207C	2-1/8" OD	25	500	\$ 1.64
IPS SIZE					
H22535	HP9213C	3/4" IPS	25	500	\$ 0.91
H22536	HP9214C	1" IPS	25	500	\$ 1.10
H22537	HP9215C	1-1/4" IPS	25	500	\$ 1.42
H22502	HP9216C	1-1/2" IPS	25	500	\$ 1.46
H22538	HP9217C	2" IPS	25	500	\$ 1.64



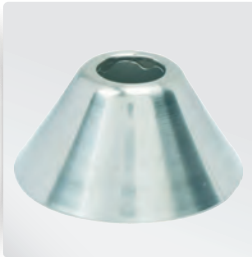
ESCUTCHEONS

- Chrome Plated Steel
- Box Escutcheons



PART #	MODEL #	DESCRIPTION (SIZE)	INNER SLEEVE QUANTITY	MASTER CARTON QUANTITY	LIST PRICE
CTS (TUBULAR SIZE)					
H22523	HP9218CBXP	1-1/4" OD	5	250	\$ 1.75
H22524	HP9220CBXP	1-1/2" OD	5	250	\$ 1.75
IPS SIZE					
H22525	HP9216CBXP	1-1/2" IPS	5	250	\$ 1.75

- Chrome Plated Steel
- Bell Escutcheons



PART #	MODEL #	DESCRIPTION (SIZE)	INNER SLEEVE QUANTITY	MASTER CARTON QUANTITY	LIST PRICE
CTS (TUBULAR SIZE)					
H22532	HP9202CBLP	5/8" OD	25	500	\$ 0.96
H22533	HP9218CBLP	1-1/4" OD	25	500	\$ 1.20
H22534	HP9220CBLP	1-1/2" OD	25	500	\$ 1.20
IPS SIZE					
H22526	HP9211CBLP	3/8" IPS	25	500	\$ 0.96
H22527	HP9212CBLP	1/2" IPS	25	500	\$ 0.96
H22528	HP9213CBLP	3/4" IPS	25	500	\$ 0.96
H22529	HP9214CBLP	1" IPS	25	500	\$ 1.20
H22530	HP9215CBLP	1-1/4" IPS	25	500	\$ 1.20
H22531	HP9216CBLP	1-1/2" IPS	25	500	\$ 1.32

MULTIPLIER (ESCU):

ESCUTCHEONS

- Chrome Plated Steel
- Floor & Ceiling Plates



PART #	MODEL #	DESCRIPTION (SIZE)	INNER SLEEVE QUANTITY	MASTER CARTON QUANTITY	LIST PRICE
CTS (TUBULAR SIZE)					
H22554	HP9202CFC	5/8" OD	25	500	\$ 1.15
H22555	HP9203CFC	7/8" OD	25	500	\$ 1.15
H22556	HP9204CFC	1-1/8" OD	25	500	\$ 1.15
H22557	HP9205CFC	1-3/8" OD	25	500	\$ 1.31
H22558	HP9206CFC	1-5/8" OD	25	500	\$ 1.31
IPS SIZE					
H22559	HP9211CFC	3/8" IPS	25	500	\$ 1.15
H22560	HP9212CFC	1/2" IPS	25	500	\$ 1.15
H22561	HP9213CFC	3/4" IPS	25	500	\$ 1.15
H22562	HP9214CFC	1" IPS	25	500	\$ 1.31
H22563	HP9215CFC	1-1/4" IPS	25	500	\$ 1.31
H22564	HP9216CFC	1-1/2" IPS	25	500	\$ 1.31
H22565	HP9217CFC	2" IPS	25	500	\$ 1.83

MULTIPLIER (ESCU):

ESCUTCHEONS

- Chrome Plated Steel
- Heavy Duty
- Floor & Ceiling Plates



PART #	MODEL #	DESCRIPTION (SIZE)	INNER SLEEVE QUANTITY	MASTER CARTON QUANTITY	LIST PRICE
CTS (TUBULAR SIZE)					
H22566	HP9201CFCHG	1/2" OD	12	480	\$ 2.74
H22567	HP9202CFCHG	5/8" OD	12	480	\$ 2.74
H22568	HP9203CFCHG	7/8" OD	12	480	\$ 2.74
H22569	HP9204CFCHG	1-1/8" OD	12	480	\$ 2.85
H22570	HP9205CFCHG	1-3/8" OD	12	240	\$ 3.07
H22571	HP9206CFCHG	1-5/8" OD	12	240	\$ 3.16
H22572	HP9207CFCHG	2-1/8" OD	12	240	\$ 3.94
IPS SIZE					
H22573	HP9211CFCHD	3/8" IPS	12	480	\$ 2.74
H22574	HP9212CFCHD	1/2" IPS	12	480	\$ 2.74
H22575	HP9213CFCHD	3/4" IPS	12	480	\$ 2.83
H22576	HP9214CFCHD	1" IPS	12	480	\$ 2.99
H22577	HP9215CFCHD	1-1/4" IPS	12	240	\$ 3.11
H22578	HP9216CFCHD	1-1/2" IPS	12	240	\$ 3.72
H22579	HP9217CFCHD	2" IPS	12	240	\$ 3.72

TOILET ACCESSORIES KITS



PART #	MODEL #	DESCRIPTION (SIZE)	INNER BAG QUANTITY	MASTER CASE QUANTITY	LIST PRICE
12" F1807 PEX TOILET INSTALL KIT with WHITE PLASTIC ESCUTCHEON (TOILET KIT # 1)					
H49061	HPTKPEX12WE	12" F1807 PEX TOILET INSTALL KIT (WHITE ESCUTCHEON)	1	25	\$ 20.50

KIT #1 INCLUDES:

PART #	MODEL #	ITEM DESCRIPTION
H49006	HPQTLFPEXAS	1/2" PEX x 3/8" OD Quarter-Turn Angle Stop - Pex Inlet
H22508	HP9202W	5/8" OD White Shallow Escutcheon
H28050	M1T12P	12" Closet Supply Line (7/8" BALLCOCK x 3/8" COMP.) Plastic Nut
H41008	HPCBP14214ENW	1/4" X 2-1/4" Brass-Plated Bolts with 4 Extra Nuts & Washers
82550	Wax Ring (82550)	Standard Wax Gasket



PART #	MODEL #	DESCRIPTION (SIZE)	INNER BAG QUANTITY	MASTER CASE QUANTITY	LIST PRICE
12" CPVC TOILET INSTALL KIT with WHITE PLASTIC ESCUTCHEON (TOILET KIT # 2)					
H49062	HPTKCPVC12WE	12" CPVC TOILET INSTALL KIT (WHITE ESCUTCHEON)	1	25	\$ 21.80

KIT #2 INCLUDES:

PART #	MODEL #	ITEM DESCRIPTION
H49002	HPQTLFCPVCAS	1/2" CPVC x 3/8" OD Quarter-Turn Angle Stop - CPVC Inlet
H22508	HP9202W	5/8" OD White Shallow Escutcheon
H28050	M1T12P	12" Closet Supply Line (7/8" BALLCOCK x 3/8" COMP.) Plastic Nut
H41008	HPCBP14214ENW	1/4" X 2-1/4" Brass-Plated Bolts with 4 Extra Nuts & Washers
82550	Wax Ring (82550)	Standard Wax Gasket

TOILET ACCESSORIES KITS



PART #	MODEL #	DESCRIPTION (SIZE)	INNER BAG QUANTITY	MASTER CASE QUANTITY	LIST PRICE
12" F1960 PEX TOILET INSTALL KIT with WHITE PLASTIC ESCUTCHEON (TOILET KIT # 3)					
H49063	HPTKPEX12WE	12" F1960 PEX TOILET INSTALL KIT (WHITE ESCUTCHEON)	1	25	\$ 21.28

KIT #3 INCLUDES:

PART #	MODEL #	ITEM DESCRIPTION
H49008	HPQTLFPEXAS	1/2" F1960 PEX x 3/8" OD Quarter-Turn Angle Stop F1960 Pex Inlet x Compression Outlet
H22508	HP9202W	5/8" OD White Shallow Escutcheon
H28050	M1T12P	12" Closet Supply Line (7/8" BALLCOCK x 3/8" COMP.) Plastic Nut
H41008	HPCBP14214ENW	1/4" X 2-1/4" Brass-Plated Bolts with 4 Extra Nuts & Washers
82550	Wax Ring (82550)	Standard Wax Gasket



PART #	MODEL #	DESCRIPTION (SIZE)	INNER BAG QUANTITY	MASTER CASE QUANTITY	LIST PRICE
12" COMP. TOILET INSTALL KIT with WHITE PLASTIC ESCUTCHEON (TOILET KIT # 4)					
H49064	HPTKCOMP12WE	12" COMP. TOILET INSTALL KIT (WHITE ESCUTCHEON)	1	25	\$ 21.54

KIT #4 INCLUDES:

PART #	MODEL #	ITEM DESCRIPTION
H49000	HPQTLFCOMPAS	5/8" OD x 3/8" OD Quarter-Turn Angle Stop - Comp Inlet
H22508	HP9202W	5/8" OD White Shallow Escutcheon
H28050	M1T12P	12" Closet Supply Line (7/8" BALLCOCK x 3/8" COMP.) Plastic Nut
H41008	HPCBP14214ENW	1/4" X 2-1/4" Brass-Plated Bolts with 4 Extra Nuts & Washers
82550	Wax Ring (82550)	Standard Wax Gasket

TOILET ACCESSORIES KITS



PART #	MODEL #	DESCRIPTION (SIZE)	INNER BAG QUANTITY	MASTER CASE QUANTITY	LIST PRICE
12" COMP. TOILET INSTALL KIT with CHROME ESCUTCHEON (TOILET KIT # 5)					
H49060	HPTKCOMP12CE	12" F1960 PEX TOILET INSTALL KIT (CHROME ESCUTCHEON)	1	25	\$ 21.70

KIT #5 INCLUDES:

PART #	MODEL #	ITEM DESCRIPTION
H49000	HPQTLFCOMPAS	5/8" OD x 3/8" OD Quarter-Turn Angle Stop - Comp Outlet
H22503	HP9202CS	5/8" OD Sure-Grip Chrome-Plated Escutcheon
H28050	M1T12P	12" Closet Supply Line (7/8" BALLCOCK x 3/8" COMP.) Plastic Nut
H41008	HPCBP14214ENW	1/4" X 2-1/4" Brass-Plated Bolts with 4 Extra Nuts & Washers
82550	Wax Ring (82550)	Standard Wax Gasket



PART #	MODEL #	DESCRIPTION (SIZE)	INNER BAG QUANTITY	MASTER CASE QUANTITY	LIST PRICE
16" F1807 PEX TOILET INSTALL KIT with CHROME ESCUTCHEON (TOILET KIT # 6)					
H49065	HPTKPEX16CEH	16" F1807 PEX TOILET INSTALL KIT (CHROME ESCUTCHEON)	1	25	\$ 21.95

KIT #6 INCLUDES:

PART #	MODEL #	ITEM DESCRIPTION
H49006	HPQTLFPEXAS	1/2" PEX x 3/8" OD Quarter-Turn Angle Stop - Pex Inlet
H22503	HP9202CS	5/8" OD Sure-Grip Chrome-Plated Escutcheon
H28051	M1T16P	16" Closet Supply Line (7/8" BALLCOCK x 3/8" COMP.) Plastic Nut
H41008	HPCBP14214ENW	1/4" X 2-1/4" Brass-Plated Bolts with 4 Extra Nuts & Washers
82555	82555	Wax Gasket with Plastic Horn

TOILET ACCESSORIES KITS



PART #	MODEL #	DESCRIPTION (SIZE)	INNER BAG QUANTITY	MASTER CASE QUANTITY	LIST PRICE
16" F1960 PEX TOILET INSTALL KIT with CHROME ESCUTCHEON (TOILET KIT # 7)					
H49066	HPTK196016CEH	16" F1960 PEX TOILET INSTALL KIT (CHROME ESCUTCHEON)	1	25	\$ 22.73

KIT #7 INCLUDES:

PART #	MODEL #	ITEM DESCRIPTION
H49008	HPQTLF1960AS	1/2" F1960 PEX x 3/8" OD Quarter-Turn Angle Stop F1960 Pex Inlet x Compression Outlet
H22503	HP9202CS	5/8" OD Sure-Grip Chrome-Plated Escutcheon
H28050	M1T16P	16" Closet Supply Line (7/8" BALLCOCK x 3/8" COMP.) Plastic Nut
H41008	HPCBP14214ENW	1/4" X 2-1/4" Brass-Plated Bolts with 4 Extra Nuts & Washers
82555	82555	Wax Gasket with Plastic Horn



PART #	MODEL #	DESCRIPTION (SIZE)	INNER BAG QUANTITY	MASTER CASE QUANTITY	LIST PRICE
16" COMP. TOILET INSTALL KIT with CHROME ESCUTCHEON (TOILET KIT # 8)					
H49067	HPTKCOMP16CEH	16" COMP. TOILET INSTALL KIT (CHROME ESCUTCHEON)	1	25	\$ 22.99

KIT #8 INCLUDES:

PART #	MODEL #	ITEM DESCRIPTION
H49000	HPQTLFCOMPAS	5/8" OD x 3/8" OD Quarter-Turn Angle Stop - Comp. Inlet
H22503	HP9202CS	5/8" OD Sure-Grip Chrome-Plated Escutcheon
H28051	M1T16P	16" Closet Supply Line (7/8" BALLCOCK x 3/8" COMP.) Plastic Nut
H41008	HPCBP14214ENW	1/4" X 2-1/4" Brass-Plated Bolts with 4 Extra Nuts & Washers
82555	82555	Wax Gasket with Plastic Horn

TOILET ACCESSORIES KITS



PART #	MODEL #	DESCRIPTION (SIZE)	INNER BAG QUANTITY	MASTER CASE QUANTITY	LIST PRICE
12" F1807 PEX TOILET INSTALL KIT with CHROME ESCUTCHEON (TOILET KIT # 9)					
H49068	HPTKPEX12CE	12" F1807 PEX TOILET INSTALL KIT (CHROME ESCUTCHEON)	1	25	\$ 20.61

KIT #9 INCLUDES:

PART #	MODEL #	ITEM DESCRIPTION
H49006	HPQTLFPEXAS	1/2" PEX x 3/8" OD Quarter-Turn Angle Stop - Pex Inlet
H22503	HP9202CS	5/8" OD Sure-Grip Chrome-Plated Escutcheon
H28050	M1T12P	12" Closet Supply Line (7/8" BALLCOCK x 3/8" COMP.) Plastic Nut
H41008	HPCBP14214ENW	1/4" X 2-1/4" Brass-Plated Bolts with 4 Extra Nuts & Washers
82550	Wax Ring (82550)	Standard Wax Gasket



PART #	MODEL #	DESCRIPTION (SIZE)	INNER BAG QUANTITY	MASTER CASE QUANTITY	LIST PRICE
12" F1960 PEX TOILET INSTALL KIT with CHROME ESCUTCHEON (TOILET KIT # 10)					
H49069	HPTK196012CE	12" F1960 PEX TOILET INSTALL KIT (CHROME ESCUTCHEON)	1	25	\$ 21.38

KIT #10 INCLUDES:

PART #	MODEL #	ITEM DESCRIPTION
H49008	HPQTLF1960AS	1/2" F1960 PEX x 3/8" OD Quarter-Turn Angle Stop F1960 Pex Inlet x Compression Outlet
H22503	HP9202CS	5/8" OD Sure-Grip Chrome-Plated Escutcheon
H28050	M1T12P	12" Closet Supply Line (7/8" BALLCOCK x 3/8" COMP.) Plastic Nut
H41008	HPCBP14214ENW	1/4" X 2-1/4" Brass-Plated Bolts with 4 Extra Nuts & Washers
82550	Wax Ring (82550)	Standard Wax Gasket