

PRICE LIST

MULTIPLIER (x)

**NORMANDY
PRODUCTS COMPANY**

PVC Sewer & Drain Fittings Multiplier (SDP):

Single Wall Corrugated Fittings Multiplier (SDC):



SEWER & DRAIN FITTINGS

- Solvent Weld White SDR 35
- Single Wall Black HDPE Corrugated

PRICE SHEET: **H06.PVCSD.0922**EFFECTIVE: **09.30.2022**REVISION: **06.10.2025**

TABLE OF CONTENTS



PRO TIP:
CLICK ON
PRODUCT SECTION
TO JUMP TO PAGE

PVC SEWER & DRAIN FITTINGS

PAGES 1 - 10

COUPLINGS	PAGE 1
REDUCING COUPLINGS	PAGE 1
REPAIR COUPLINGS	PAGE 1
90° SHORT TURN 1/4 BEND ELBOW	PAGE 1
90° 1/4 BEND STREET ELBOW	PAGE 2
90° 1/4 BEND LONG TURN ELBOW	PAGE 2
90° 1/4 BEND STREET LONG TURN ELBOW	PAGE 2
FEMALE ADAPTERS	PAGE 2
45° 1/8 BEND ELBOW	PAGE 3
45° 1/8 BEND STREET ELBOW	PAGE 3
22-1/2° 1/16 BEND ELBOW	PAGE 3
22-1/2° 1/16 BEND STREET ELBOW	PAGE 4
TEES	PAGE 4
45° WYES	PAGE 4
SANITARY TEES	PAGE 5
CLEANOUT TEE	PAGE 5
TWO-WAY CLEANOUT TEES	PAGE 5
CROSSES	PAGE 6
DOWNSPOUT ADAPTERS	PAGE 6
OFFSET FLUSH-FIT DOWNSPOUT ADAPTERS	PAGE 6
CAPS	PAGE 7
DRAIN GRATES	PAGE 7
FITTING CLEANOUTS	PAGE 7
PLUGS	PAGE 8
FITTING CLEANOUT WITH PLUGS	PAGE 8
COUNTERSUNK PLUGS	PAGE 8
ADAPTER PLUGS	PAGE 8
DWV ADAPTER SLEEVES	PAGE 9
REDUCER SLEEVES	PAGE 9
THREADED BUSHINGS	PAGE 9
EXTENDED BUSHINGS	PAGE 9
FLUSH BUSHINGS	PAGE 10
ECCENTRIC BUSHINGS	PAGE 10
ADAPTER BUSHINGS	PAGE 10

SINGLE WALL CORRUGATED FITTINGS

PAGES 11 - 14

HDPE CORRUGATED EXTERNAL SNAP COUPLINGS	PAGE 11
HDPE CORRUGATED INTERNAL SNAP COUPLINGS	PAGE 11
HDPE CORRUGATE REDUCER COUPLINGS	PAGE 11
HDPE CORRUGATED TO RIGID ADAPTERS	PAGE 11
HDPE CORRUGATED 90° 1/4 BEND ELBOW	PAGE 12
HDPE CORRUGATED STRAIGHT TEES	PAGE 12
HDPE REDUCING TEES	PAGE 12
HDPE CORRUGATED BLIND TEES	PAGE 12
HDPE CORRUGATED REDUCING BLIND TEE	PAGE 13
HDPE CORRUGATED WYES	PAGE 13
HDPE CORRUGATED REDUCING WYES	PAGE 13
HDPE CORRUGATED CAPS	PAGE 13
HDPE CORRUGATED DOWNSPOUT ADAPTERS	PAGE 14

NO CRITTERS DRAIN PIPE GUARD™

PAGE 14

NO CRITTERS DRAIN PIPE GUARD™	PAGE 14
-------------------------------	---------



FOR CALIFORNIA CONSUMERS WARNING:

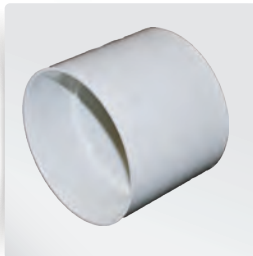
This product can expose you to chemicals including lead compounds, which are known to the State of California to cause cancer and birth defects or other reproductive harm. **For more information go to www.P65Warnings.ca.gov**

www.hydrapro.biz | (877) 813-2333 | info@hydrapro.biz

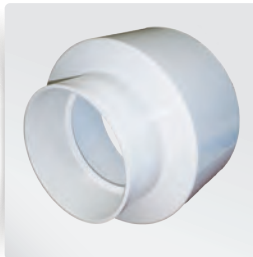
Atlanta (GA) • Dallas (TX) • Houston (TX) • Pompano Beach (FL) • Jackson (MI) • Columbus (OH)

PVC SEWER & DRAIN FITTINGS

- White Solvent Weld SDR35
- Meets or exceeds ASTM D3034 and D2729



MODEL #	DESCRIPTION (SIZE)	MASTER CARTON QTY.	LIST PRICE
COUPLINGS (SEWER HUB x SEWER HUB)			
NV103	3" x 3" COUPLING	50	\$ 7.90
NV104	4" x 4" COUPLING	50	\$ 9.00
NV106	6" x 6" COUPLING	24	\$33.00
NV108	8" x 8" COUPLING	4	\$195.60



*ITEM IS ORDER AS NEEDED

MODEL #	DESCRIPTION (SIZE)	MASTER CARTON QTY.	LIST PRICE
REDUCING COUPLINGS (SEWER HUB x SEWER HUB)			
NV1043	4" x 3" REDUCING COUPLING	40	\$ 17.00
NV1064T	6" x 4" REDUCING COUPLING	15	\$ 82.20
NV1084	8" x 4" REDUCING COUPLING*	8	\$ 219.84
NV1086	8" x 6" REDUCING COUPLING*	8	\$ 231.62



MODEL #	DESCRIPTION (SIZE)	MASTER CARTON QTY.	LIST PRICE
REPAIR COUPLING (SEWER HUB x SEWER HUB) - NO STOP			
NV144	4" x 4" REPAIR COUPLING	30	\$ 8.59



MODEL #	DESCRIPTION (SIZE)	MASTER CARTON QTY.	LIST PRICE
90° SHORT TURN 1/4 BEND (SEWER HUB x SEWER HUB)			
NV3303	3" x 3" 90° SHORT TURN ELBOW	25	\$ 11.90
NV3304	4" x 4" 90° SHORT TURN ELBOW	25	\$ 15.80
NV306	6" x 6" 90° SHORT TURN ELBOW	12	\$ 49.80
NV308	8" x 8" 90° SHORT TURN ELBOW	30 / Crate	\$ 411.10



PVC SEWER & DRAIN FITTINGS

- White Solvent Weld SDR35
- Meets or exceeds ASTM D3034 and D2729



MODEL #	DESCRIPTION (SIZE)	MASTER CARTON QTY.	LIST PRICE
90° STREET 1/4 BEND (SEWER HUB x SEWER SPIGOT)			
NV3403	3" x 3" 90° STREET ELBOW	25	\$ 21.10
NV3404	4" x 4" 90° STREET ELBOW	25	\$ 21.90
NV406	6" x 6" 90° STREET ELBOW	8	\$ 101.80



MODEL #	DESCRIPTION (SIZE)	MASTER CARTON QTY.	LIST PRICE
90° 1/4 BEND LONG TURN (SEWER HUB x SEWER HUB)			
NV303	3" x 3" 90° LONG TURN ELBOW	25	\$ 14.10
NV304	4" x 4" 90° LONG TURN ELBOW	36	\$ 18.70
NV366	6" x 6" 90° LONG TURN ELBOW	8	\$ 90.10



MODEL #	DESCRIPTION (SIZE)	MASTER CARTON QTY.	LIST PRICE
90° STREET 1/4 BEND LONG TURN (SEWER HUB x SEWER SPIGOT)			
NV403	3" x 3" 90° STREET LONG TURN ELBOW	25	\$ 20.00
NV404	4" x 4" 90° STREET LONG TURN ELBOW	36	\$ 21.90



MODEL #	DESCRIPTION (SIZE)	MASTER CARTON QTY.	LIST PRICE
FEMALE ADAPTERS (SEWER HUB x FIP)			
NV2103	3" x 3" FEMALE ADAPTER	24	\$ 20.60
NV2104	4" x 4" FEMALE ADAPTER	24	\$ 18.00
NV2106	6" x 6" FEMALE ADAPTER	12	\$ 84.60
NV2108	8" x 8" FEMALE ADAPTER	6	\$ 517.80

PVC SEWER & DRAIN FITTINGS

- White Solvent Weld SDR35
- Meets or exceeds ASTM D3034 and D2729



MODEL #	DESCRIPTION (SIZE)	MASTER CARTON QTY.	LIST PRICE
45° 1/8 BEND (SEWER HUB x SEWER HUB)			
NV503	3" x 3" 45° ELBOW	30	\$ 9.90
NV504	4" x 4" 45° ELBOW	60	\$ 13.60
NV506	6" x 6" 45° ELBOW	18	\$ 53.70
NV508	8" x 8" 45° ELBOW	11	\$ 275.60



MODEL #	DESCRIPTION (SIZE)	MASTER CARTON QTY.	LIST PRICE
45° STREET 1/8 BEND (SEWER HUB x SEWER SPIGOT)			
NV603	3" x 3" 45° STREET ELBOW	30	\$ 16.70
NV604	4" x 4" 45° STREET ELBOW	60	\$ 18.50
NV606	6" x 6" 45° STREET ELBOW	18	\$ 68.60



MODEL #	DESCRIPTION (SIZE)	MASTER CARTON QTY.	LIST PRICE
22 1/2° 1/16 BEND (SEWER HUB x SEWER HUB)			
NV703	3" x 3" 22 1/2° ELBOW	25	\$ 14.50
NV704	4" x 4" 22 1/2° ELBOW	30	\$ 15.00
NV706	6" x 6" 22 1/2° ELBOW	20	\$ 65.50
NV708	8" x 8" 22 1/2° ELBOW	8	\$ 322.20

PVC SEWER & DRAIN FITTINGS

- White Solvent Weld SDR35
- Meets or exceeds ASTM D3034 and D2729



MODEL #	DESCRIPTION (SIZE)	MASTER CARTON QTY.	LIST PRICE
22 1/2° STREET 1/16 BEND (SEWER HUB x SEWER SPIGOT)			
NV714	4" x 4" 22 1/2° STREET ELBOW	30	\$ 18.50



MODEL #	DESCRIPTION (SIZE)	MASTER CARTON QTY.	LIST PRICE
TEES (SEWER HUB x SEWER HUB x SEWER HUB)			
NV803	3" x 3" x 3" TEE	30	\$ 13.00
NV804	4" x 4" x 4" TEE	30	\$ 18.00
NV806	6" x 6" x 6" TEE	8	\$ 74.60
NV8064	6" x 6" x 4" TEE	5	\$ 74.40
NV808	8" x 8" x 8" TEE	2	\$ 600.00



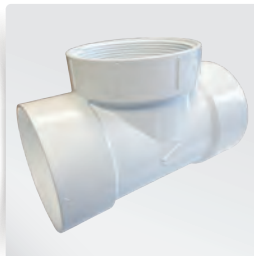
MODEL #	DESCRIPTION (SIZE)	MASTER CARTON QTY.	LIST PRICE
45° WYES (SEWER HUB x SEWER HUB)			
NV903	3" x 3" 45° WYE	25	\$ 24.40
NV904	4" x 4" 45° WYE	24	\$ 24.90
NV906	6" x 6" 45° WYE	6	\$ 105.50
NV9064	6" x 4" 45° WYE	8	\$ 92.00
NV908	8" x 8" 45° WYE	16 / Crate	\$ 694.40
NV9084	8" x 4" 45° WYE	31 / Crate	\$ 391.10
NV9086	8" x 6" 45° WYE	4	\$ 466.70

PVC SEWER & DRAIN FITTINGS

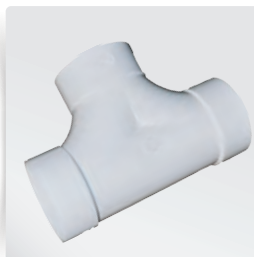
- White Solvent Weld SDR35
- Meets or exceeds ASTM D3034 and D2729



MODEL #	DESCRIPTION (SIZE)	MASTER CARTON QTY.	LIST PRICE
SANITARY TEES (SEWER HUB x SEWER HUB x SEWER HUB)			
NV1103	3" x 3" x 3" SANITARY TEE	24	\$ 28.10
NV1104	4" x 4" x 4" SANITARY TEE	25	\$ 28.80
NV11064	6" x 6" x 4" SANITARY TEE	5	\$ 213.93
NV1106	6" x 6" x 6" SANITARY TEE	6	\$ 202.20



MODEL #	DESCRIPTION (SIZE)	MASTER CARTON QTY.	LIST PRICE
CLEANOUT TEE (SEWER HUB x SEWER HUB x FIP)			
NV8804	4" x 4" x 4" CLEANOUT TEE	30	\$ 47.70



MODEL #	DESCRIPTION (SIZE)	MASTER CARTON QTY.	LIST PRICE
TWO-WAY CLEANOUT TEE (SEWER HUB x SEWER HUB x SEWER HUB)			
NV2204	4" x 4" x 4" TWO-WAY CLEANOUT TEE	10	\$ 51.50



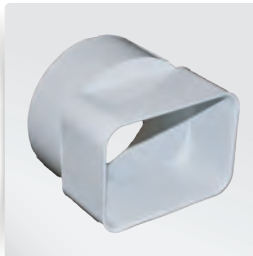
MODEL #	DESCRIPTION (SIZE)	MASTER CARTON QTY.	LIST PRICE
TWO-WAY CLEANOUT TEE (SEWER HUB x DWV x SEWER HUB)			
NV2214	4" x 4" x 4" TWO-WAY CLEANOUT TEE	10	\$ 112.20

PVC SEWER & DRAIN FITTINGS

- White Solvent Weld SDR35
- Meets or exceeds ASTM D3034 and D2729



MODEL #	DESCRIPTION (SIZE)	MASTER CARTON QTY.	LIST PRICE
CROSS (SEWER HUB x SEWER HUB x SEWER HUB x SEWER HUB)			
NV1304	4" x 4" x 4" x 4" CROSS	24	\$ 52.70



MODEL #	DESCRIPTION (SIZE)	MASTER CARTON QTY.	LIST PRICE
DOWNSPOUT ADAPTERS (DOWNSPOUT x SEWER HUB)			
NV1703	2" x 3" x 3" DOWNSPOUT ADAPTER	50	\$ 13.30
NV1704	2" x 3" x 4" DOWNSPOUT ADAPTER	50	\$ 14.40
NV1705	3" x 4" x 4" DOWNSPOUT ADAPTER	25	\$ 25.60

The first two sizes are dimensions of the Downspout Square, the third size refers to the Sewer Pipe.

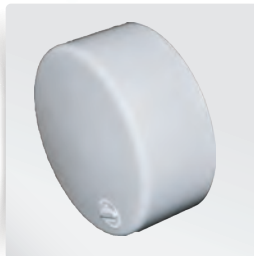


MODEL #	DESCRIPTION (SIZE)	MASTER CARTON QTY.	LIST PRICE
OFFSET FLUSH-FIT DOWNSPOUT ADAPTERS (DOWNSPOUT x SEWER HUB)			
NV1714	2" x 3" x 4" OFFSET FLUSH-FIT DOWNSPOUT ADAPTER	25	\$ 12.30
NV1715	3" x 4" x 4" OFFSET FLUSH-FIT DOWNSPOUT ADAPTER	25	\$ 21.70
NV1706	4" x 6" x 6" OFFSET FLUSH-FIT DOWNSPOUT ADAPTER	15	\$ 80.40

The first two sizes are dimensions of the Downspout Square, the third size refers to the Sewer Pipe.

PVC SEWER & DRAIN FITTINGS

- White Solvent Weld SDR35
- Meets or exceeds ASTM D3034 and D2729



MODEL #	DESCRIPTION (SIZE)	MASTER CARTON QTY.	LIST PRICE
CAPS			
NV1403	3" CAP	30	\$ 6.00
NV1404	4" CAP	30	\$ 7.90
NV1406	6" CAP	24	\$ 28.90
NV1408	8" CAP	10	\$ 186.70

Fits over Spigot End of Sewer Pipe.



MODEL #	DESCRIPTION (SIZE)	MASTER CARTON QTY.	LIST PRICE
DRAIN GRATES			
NV1803	3" DRAIN GRATE	50	\$ 13.60
NV1804	4" DRAIN GRATE	40	\$ 14.80
NV1806	6" DRAIN GRATE	25	\$ 59.90

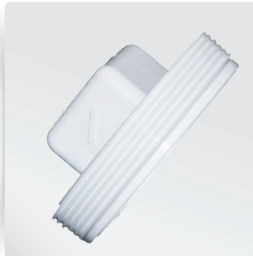
Drops into the Hub End of Sewer Pipe or Fitting.



MODEL #	DESCRIPTION (SIZE)	MASTER CARTON QTY.	LIST PRICE
FITTING CLEANOUTS (SEWER SPIGOT x FIP)			
NV1903	3" FITTING CLEANOUT	40	\$ 14.40
NV1904	4" FITTING CLEANOUT	20	\$ 14.10
NV1906	6" FITTING CLEANOUT	12	\$ 87.70

PVC SEWER & DRAIN FITTINGS

- White Solvent Weld SDR35
- Meets or exceeds ASTM D3034 and D2729



MODEL #	DESCRIPTION (SIZE)	MASTER CARTON QTY.	LIST PRICE
PLUGS (IPS THREADS)			
NV2003	3" PLUG	50	\$ 10.50
NV2004	4" PLUG	50	\$ 10.90
NV2006	6" PLUG	12	\$ 54.70



MODEL #	DESCRIPTION (SIZE)	MASTER CARTON QTY.	LIST PRICE
FITTING CLEANOUT with PLUGS			
NV1924	4" FITTING CLEANOUT WITH PLUG	50	\$ 38.90

NV-1924 consists of one V-1904 Cleanout and one V-2004 Plug.



MODEL #	DESCRIPTION (SIZE)	MASTER CARTON QTY.	LIST PRICE
COUNTERSUNK PLUGS			
NV2014	4" COUNTERSUNK PLUG	48	\$ 13.30
NV2016	6" COUNTERUNK PLUG	12	\$ 52.20



MODEL #	DESCRIPTION (SIZE)	MASTER CARTON QTY.	LIST PRICE
ADAPTER COUPLINGS (SEWER HUB x DWV HUB)			
NV2043	4" x 3" ADAPTER COUPLING	40	\$ 15.90
NV2044	4" x 4" ADAPTER COUPLING	25	\$ 22.90
NV2046T	6" x 4" ADAPTER COUPLING - TAPERED	15	\$ 61.70
NV2066	6" x 6" ADAPTER COUPLING	12	\$ 78.70

TAPERED
NV2046T



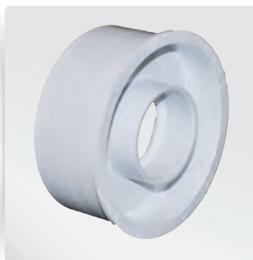
PVC SEWER & DRAIN FITTINGS

- White Solvent Weld SDR35
- Meets or exceeds ASTM D3034 and D2729



MODEL #	DESCRIPTION (SIZE)	MASTER CARTON QTY.	LIST PRICE
DWV ADAPTER SLEEVES (DWV SPIGOT x SEWER HUB)			
NV3033	3" x 3" DWV ADAPTER SLEEVE	25	\$ 18.90
NV3044	4" x 4" DWV ADAPTER SLEEVE	25	\$ 17.10
NV3066	6" x 6" DWV ADAPTER SLEEVE	10	\$ 76.96

Adapter fits into DWV Hub and allows for transition to Sewer Pipe.



MODEL #	DESCRIPTION (SIZE)	MASTER CARTON QTY.	LIST PRICE
REDUCER SLEEVES (SEWER SPIGOT x DWV HUB)			
NV1031	3" x 1-1/2" REDUCER SLEEVE	25	\$ 20.20
NV1041	4" x 1-1/2" REDUCER SLEEVE	25	\$ 30.80
NV1042	4" x 2" REDUCER SLEEVE	25	\$ 31.20

Adapter fits into Sewer Hub and allows for transition to DWV Pipe.



MODEL #	DESCRIPTION (SIZE)	MASTER CARTON QTY.	LIST PRICE
THREADED BUSHING (SEWER SPIGOT x FIP)			
NV2041	4" x 1-1/2" THREADED BUSHING (SEWER SPIGOT x FIP)	25	\$ 30.40

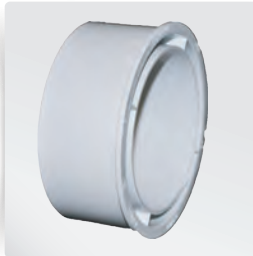


MODEL #	DESCRIPTION (SIZE)	MASTER CARTON QTY.	LIST PRICE
EXTENDED BUSHINGS (SEWER SPIGOT x SEWER HUB)			
NV2064	6" x 4" EXTENDED BUSHING	24	\$ 42.80
NV2084	8" x 4" EXTENDED BUSHING	8	\$ 267.80
NV2086	8" x 6" EXTENDED BUSHING	8	\$ 273.30

Adapter fits into Sewer Hub and allows for connection to Sewer Pipe.

PVC SEWER & DRAIN FITTINGS

- White Solvent Weld SDR35
- Meets or exceeds ASTM D3034 and D2729



MODEL #	DESCRIPTION (SIZE)	MASTER CARTON QTY.	LIST PRICE
FLUSH BUSHINGS (SEWER SPIGOT x SEWER HUB)			
NV1143	4" x 3" FLUSH BUSHING	25	\$ 55.80



MODEL #	DESCRIPTION (SIZE)	MASTER CARTON QTY.	LIST PRICE
ECCENTRIC BUSHINGS (SEWER SPIGOT x SEWER HUB)			
NV2164	6" x 4" ECCENTRIC BUSHING	15	\$ 52.60

Adapter fits into Sewer Hub and allows for connection to Sewer Pipe.



MODEL #	DESCRIPTION (SIZE)	MASTER CARTON QTY.	LIST PRICE
ADAPTER BUSHINGS (SEWER SPIGOT x DWV HUB)			
P1202	3" x 1-1/2" ADAPTER BUSHING	18	\$ 41.30
P1203	3" x 2" ADAPTER BUSHING	50	\$ 55.30
NV2644	4" x 4" ADAPTER BUSHING	24	\$ 69.79
P1204	4" x 1-1/2" ADAPTER BUSHING	8	\$ 66.90
P1205	4" x 2" ADAPTER BUSHING	25	\$ 70.10
NV2664	6" x 4" ADAPTER BUSHING - EXTENDED	12	\$ 75.40
NV2666	6" x 6" ADAPTER BUSHING	12	\$ 88.21

EXTENDED
NV2664

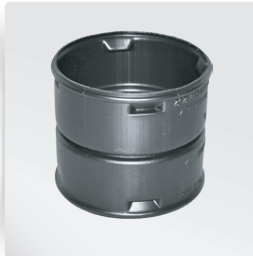
Adapter fits into Sewer Hub and allows for transition to DWV Pipe.



MODEL #	DESCRIPTION (SIZE)	MASTER CARTON QTY.	LIST PRICE
CORRUGATED ADAPTER			
NV44	4" x 4" PVC CORRUGATED ADAPTER	60	\$ 14.20

SINGLE WALL CORRUGATED FITTINGS

- Black HDPE
- Meets or exceeds ASTM F405



MODEL #	DESCRIPTION (SIZE)	MASTER CARTON QTY.	LIST PRICE
HDPE CORRUGATED EXTERNAL SNAP COUPLINGS			
NC103	3" HDPE CORRUGATED EXTERNAL SNAP COUPLING	24	\$ 7.80
NC104	4" HDPE CORRUGATED EXTERNAL SNAP COUPLING	20	\$ 7.80
NC106	6" HDPE CORRUGATED EXTERNAL SNAP COUPLING	8	\$ 18.20



MODEL #	DESCRIPTION (SIZE)	MASTER CARTON QTY.	LIST PRICE
HDPE CORRUGATED INTERNAL SNAP COUPLINGS			
NC203	3" HDPE CORRUGATED INTERNAL SNAP COUPLING	30	\$ 9.90
NC204	4" HDPE CORRUGATED INTERNAL SNAP COUPLING	24	\$ 10.20
NC206	6" HDPE CORRUGATED INTERNAL SNAP COUPLING	8	\$ 20.40



MODEL #	DESCRIPTION (SIZE)	MASTER CARTON QTY.	LIST PRICE
HDPE CORRUGATED REDUCER COUPLINGS - OFFSET			
NC1043	4" x 3" HDPE CORRUGATED REDUCER COUPLING - OFFSET	20	\$ 13.00
NC1064	6" x 4" HDPE CORRUGATED REDUCER COUPLING - OFFSET	8	\$ 20.70



MODEL #	DESCRIPTION (SIZE)	MASTER CARTON QTY.	LIST PRICE
HDPE CORRUGATED TO RIGID ADAPTERS			
NC44	4" x 4" HDPE CORRUGATED TO RIGID ADAPTER	24	\$ 9.00
NC66	6" x 6" HDPE CORRUGATED TO RIGID ADAPTER	12	\$ 21.20

Corrugated Hub x Rigid SPG & Insert adapts corrugated tube to rigid pipe or fitting.

SINGLE WALL CORRUGATED FITTINGS

- Black HDPE
- Meets or exceeds ASTM F405



MODEL #	DESCRIPTION (SIZE)	MASTER CARTON QTY.	LIST PRICE
HDPE CORRUGATED 90° 1/4 BEND			
NC303	3" HDPE CORRUGATED ELBOW	15	\$ 22.10
NC304	4" HDPE CORRUGATED ELBOW	12	\$ 26.70
NC306	6" HDPE CORRUGATED ELBOW	4	\$ 42.40



MODEL #	DESCRIPTION (SIZE)	MASTER CARTON QTY.	LIST PRICE
HDPE CORRUGATED STRAIGHT TEES			
NC803	3" HDPE CORRUGATED STRAIGHT TEE	12	\$ 17.10
NC804	4" HDPE CORRUGATED STRAIGHT TEE	12	\$ 21.50
NC806	6" HDPE CORRUGATED STRAIGHT TEE	4	\$ 47.70



MODEL #	DESCRIPTION (SIZE)	MASTER CARTON QTY.	LIST PRICE
HDPE REDUCING TEE			
NC8064	6" x 4" HDPE CORRUGATED REDUCING TEE	3	\$ 49.10

Cut off socket(s) to make 5" or 6" socket.



MODEL #	DESCRIPTION (SIZE)	MASTER CARTON QTY.	LIST PRICE
HDPE CORRUGATED BLIND TEES			
NC814	4" HDPE CORRUGATED BLIND TEE	10	\$ 32.20
NC816	6" HDPE CORRUGATED BLIND TEE	3	\$ 47.70

Serves as a 6" 90° elbow. Cut off 6" cap to make H x H x H tee.

SINGLE WALL CORRUGATED FITTINGS

- Black HDPE
- Meets or exceeds ASTM F405



MODEL #	DESCRIPTION (SIZE)	MASTER CARTON QTY.	LIST PRICE
HDPE CORRUGATED REDUCING BLIND TEE			
NC8164	6" x 4" HDPE CORRUGATED REDUCING BLIND TEE	3	\$ 70.10

Serves as a 6" 90° elbow. Socket(s) to make 5" or 6" socket.
Cut off 6" cap to make H x H x H tee.



MODEL #	DESCRIPTION (SIZE)	MASTER CARTON QTY.	LIST PRICE
HDPE CORRUGATED WYES			
NC903	3" HDPE CORRUGATED WYE	10	\$ 24.80
NC904	4" HDPE CORRUGATED WYE	8	\$ 36.40
NC906	6" HDPE CORRUGATED WYE	4	\$ 55.70



MODEL #	DESCRIPTION (SIZE)	MASTER CARTON QTY.	LIST PRICE
HDPE CORRUGATED REDUCING WYE			
NC9064	6" x 4" HDPE CORRUGATED REDUCING WYE	4	\$ 57.40



MODEL #	DESCRIPTION (SIZE)	MASTER CARTON QTY.	LIST PRICE
HDPE CORRUGATED CAPS			
NC1403	3" HDPE CORRUGATED CAP	20	\$ 6.70
NC1404	4" HDPE CORRUGATED CAP	30	\$ 13.40
NC1406	6" HDPE CORRUGATED CAP	10	\$ 25.50

SINGLE WALL CORRUGATED FITTINGS

- Black HDPE
- Meets or exceeds ASTM F405



MODEL #	DESCRIPTION (SIZE)	MASTER CARTON QTY.	LIST PRICE
HDPE CORRUGATED DOWNSPOUT ADAPTERS			
NC1703	2" x 3" x 3" HDPE CORRUGATED DOWNSPOUT ADAPTER	15	\$ 13.10
NC1704	2" x 3" x 4" HDPE CORRUGATED DOWNSPOUT ADAPTER	18	\$ 17.70
NC1705	3" x 4" x 4" HDPE CORRUGATED DOWNSPOUT ADAPTER	15	\$ 17.70
NC1706	4" x 6" x 6" HDPE CORRUGATED DOWNSPOUT ADAPTER	2	\$ 57.40

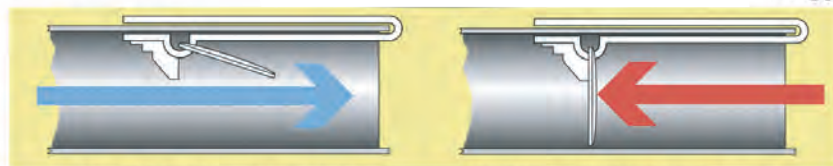


MODEL #	DESCRIPTION (SIZE)	MASTER CARTON QTY.	LIST PRICE
NO CRITTERS DRAIN PIPE GUARD™			
NDG04	4" NO-CRITTERS DRAIN PIPE GUARD™	EACH	\$ 20.00
NDG06	6" NO-CRITTERS DRAIN PIPE GUARD™	EACH	\$ 25.00



Fits Sewer & Drain Pipe,
Corrugated Pipe,
DWV & SCH 40 Pipe

Keeps Pests And
Debris From
Clogging Pipes



The "ONE WAY" Drain Guard swings open to allow free flow of water.

The "ONE WAY" Design prevents guard from swinging in opposite direction.



Privately Owned for over 60 Years

All products **Made in the USA**

Maintains the **largest inventory of Raw Materials** in the Industry