

## PRICE LIST

MULTIPLIER (x)



PVC Sewer & Drain Fittings Multiplier (SDP):

Single Wall Corrugated Fittings Multiplier (SDC):



## SEWER & DRAIN FITTINGS

- Solvent Weld White SDR 35
- Single Wall Black HDPE Corrugated

PRICE SHEET: **H06.PVCSD.0526**

EFFECTIVE: **05.11.2026**

# TABLE OF CONTENTS



**PRO TIP:**  
CLICK ON  
**PRODUCT SECTION**  
TO JUMP TO PAGE

## PVC SEWER & DRAIN FITTINGS

**PAGES 1 - 10**

COUPLINGS	<b>PAGE 1</b>
REDUCING COUPLINGS	<b>PAGE 1</b>
REPAIR COUPLINGS	<b>PAGE 1</b>
90° SHORT TURN 1/4 BEND ELBOW	<b>PAGE 1</b>
90° 1/4 BEND STREET ELBOW	<b>PAGE 2</b>
90° 1/4 BEND LONG TURN ELBOW	<b>PAGE 2</b>
90° 1/4 BEND STREET LONG TURN ELBOW	<b>PAGE 2</b>
FEMALE ADAPTERS	<b>PAGE 2</b>
45° 1/8 BEND ELBOW	<b>PAGE 3</b>
45° 1/8 BEND STREET ELBOW	<b>PAGE 3</b>
22-1/2° 1/16 BEND ELBOW	<b>PAGE 3</b>
22-1/2° 1/16 BEND STREET ELBOW	<b>PAGE 4</b>
TEES	<b>PAGE 4</b>
45° WYES	<b>PAGE 4</b>
SANITARY TEES	<b>PAGE 5</b>
CLEANOUT TEE	<b>PAGE 5</b>
TWO-WAY CLEANOUT TEES	<b>PAGE 5</b>
CROSSES	<b>PAGE 6</b>
DOWNSPOUT ADAPTERS	<b>PAGE 6</b>
OFFSET FLUSH-FIT DOWNSPOUT ADAPTERS	<b>PAGE 6</b>
CAPS	<b>PAGE 7</b>
DRAIN GRATES	<b>PAGE 7</b>
FITTING CLEANOUTS	<b>PAGE 7</b>
PLUGS	<b>PAGE 8</b>
FITTING CLEANOUT WITH PLUGS	<b>PAGE 8</b>
COUNTERSUNK PLUGS	<b>PAGE 8</b>
ADAPTER PLUGS	<b>PAGE 8</b>
DWV ADAPTER SLEEVES	<b>PAGE 9</b>
REDUCER SLEEVES	<b>PAGE 9</b>
THREADED BUSHINGS	<b>PAGE 9</b>
EXTENDED BUSHINGS	<b>PAGE 9</b>
FLUSH BUSHINGS	<b>PAGE 10</b>
ECCENTRIC BUSHINGS	<b>PAGE 10</b>
ADAPTER BUSHINGS	<b>PAGE 10</b>

## SINGLE WALL CORRUGATED FITTINGS

**PAGES 11 - 14**

HDPE CORRUGATED EXTERNAL SNAP COUPLINGS	<b>PAGE 11</b>
HDPE CORRUGATED INTERNAL SNAP COUPLINGS	<b>PAGE 11</b>
HDPE CORRUGATE REDUCER COUPLINGS	<b>PAGE 11</b>
HDPE CORRUGATED TO RIGID ADAPTERS	<b>PAGE 11</b>
HDPE CORRUGATED 90° 1/4 BEND ELBOW	<b>PAGE 12</b>
HDPE CORRUGATED STRAIGHT TEES	<b>PAGE 12</b>
HDPE REDUCING TEES	<b>PAGE 12</b>
HDPE CORRUGATED BLIND TEES	<b>PAGE 12</b>
HDPE CORRUGATED REDUCING BLIND TEE	<b>PAGE 13</b>
HDPE CORRUGATED WYES	<b>PAGE 13</b>
HDPE CORRUGATED REDUCING WYES	<b>PAGE 13</b>
HDPE CORRUGATED CAPS	<b>PAGE 13</b>
HDPE CORRUGATED DOWNSPOUT ADAPTERS	<b>PAGE 14</b>

## NO CRITTERS DRAIN PIPE GUARD™

**PAGE 14**

NO CRITTERS DRAIN PIPE GUARD™	<b>PAGE 14</b>
-------------------------------	----------------



### **WARNING: FOR CALIFORNIA CONSUMERS**

This product can expose you to chemicals including styrene, which are known to the State of California to cause cancer.  
**For more information go to [www.P65Warnings.ca.gov](http://www.P65Warnings.ca.gov)**

[www.hydrapro.biz](http://www.hydrapro.biz) | (877) 813-2333 | [info@hydrapro.biz](mailto:info@hydrapro.biz)

Atlanta (GA) • Dallas (TX) • Houston (TX) • Pompano Beach (FL) • Jackson (MI) • Columbus (OH)

## PVC SEWER & DRAIN FITTINGS

- White Solvent Weld SDR35
- Meets or exceeds ASTM D3034 and D2729



MODEL #	DESCRIPTION (SIZE)	MASTER CARTON QTY.	LIST PRICE
<b>COUPLINGS (SEWER HUB x SEWER HUB)</b>			
NV103	3" x 3" COUPLING	50	\$ 8.59
NV104	4" x 4" COUPLING	50	\$ 9.78
NV106	6" x 6" COUPLING	24	\$35.87
NV108	8" x 8" COUPLING	4	\$212.61

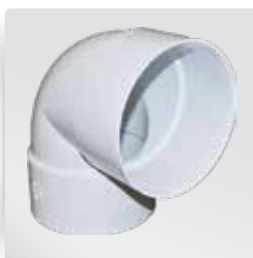


**\*ITEM IS ORDER AS NEEDED**

MODEL #	DESCRIPTION (SIZE)	MASTER CARTON QTY.	LIST PRICE
<b>REDUCING COUPLINGS (SEWER HUB x SEWER HUB)</b>			
NV1043	4" x 3" REDUCING COUPLING	40	\$ 18.48
NV1064T	6" x 4" REDUCING COUPLING	15	\$ 89.35
NV1084	8" x 4" REDUCING COUPLING*	8	\$ 238.96
NV1086	8" x 6" REDUCING COUPLING*	8	\$ 251.76



MODEL #	DESCRIPTION (SIZE)	MASTER CARTON QTY.	LIST PRICE
<b>REPAIR COUPLING (SEWER HUB x SEWER HUB) - NO STOP</b>			
NV144	4" x 4" REPAIR COUPLING	30	\$ 9.34



MODEL #	DESCRIPTION (SIZE)	MASTER CARTON QTY.	LIST PRICE
<b>90° SHORT TURN 1/4 BEND (SEWER HUB x SEWER HUB)</b>			
NV3303	3" x 3" 90° SHORT TURN ELBOW	25	\$ 12.93
NV3304	4" x 4" 90° SHORT TURN ELBOW	25	\$ 17.17
NV306	6" x 6" 90° SHORT TURN ELBOW	12	\$ 54.13
NV308	8" x 8" 90° SHORT TURN ELBOW	30 / Crate	\$ 446.85



## PVC SEWER & DRAIN FITTINGS

- White Solvent Weld SDR35
- Meets or exceeds ASTM D3034 and D2729



MODEL #	DESCRIPTION (SIZE)	MASTER CARTON QTY.	LIST PRICE
<b>90° STREET 1/4 BEND (SEWER HUB x SEWER SPIGOT)</b>			
NV3403	3" x 3" 90° STREET ELBOW	25	\$ 22.93
NV3404	4" x 4" 90° STREET ELBOW	25	\$ 23.80
NV406	6" x 6" 90° STREET ELBOW	8	\$ 110.65



MODEL #	DESCRIPTION (SIZE)	MASTER CARTON QTY.	LIST PRICE
<b>90° 1/4 BEND LONG TURN (SEWER HUB x SEWER HUB)</b>			
NV303	3" x 3" 90° LONG TURN ELBOW	25	\$ 15.33
NV304	4" x 4" 90° LONG TURN ELBOW	36	\$ 20.33
NV366	6" x 6" 90° LONG TURN ELBOW	8	\$ 97.93



MODEL #	DESCRIPTION (SIZE)	MASTER CARTON QTY.	LIST PRICE
<b>90° STREET 1/4 BEND LONG TURN (SEWER HUB x SEWER SPIGOT)</b>			
NV403	3" x 3" 90° STREET LONG TURN ELBOW	25	\$ 21.74
NV404	4" x 4" 90° STREET LONG TURN ELBOW	36	\$ 23.80



MODEL #	DESCRIPTION (SIZE)	MASTER CARTON QTY.	LIST PRICE
<b>FEMALE ADAPTERS (SEWER HUB x FIP)</b>			
NV2103	3" x 3" FEMALE ADAPTER	24	\$ 22.39
NV2104	4" x 4" FEMALE ADAPTER	24	\$ 19.57
NV2106	6" x 6" FEMALE ADAPTER	12	\$ 91.96
NV2108	8" x 8" FEMALE ADAPTER	6	\$ 562.83

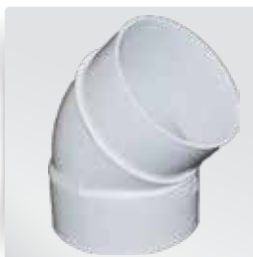


## PVC SEWER & DRAIN FITTINGS

- White Solvent Weld SDR35
- Meets or exceeds ASTM D3034 and D2729



MODEL #	DESCRIPTION (SIZE)	MASTER CARTON QTY.	LIST PRICE
<b>45° 1/8 BEND (SEWER HUB x SEWER HUB)</b>			
NV503	3" x 3" 45° ELBOW	30	\$ 10.76
NV504	4" x 4" 45° ELBOW	60	\$ 14.78
NV506	6" x 6" 45° ELBOW	18	\$ 58.37
NV508	8" x 8" 45° ELBOW	11	\$ 299.57



MODEL #	DESCRIPTION (SIZE)	MASTER CARTON QTY.	LIST PRICE
<b>45° STREET 1/8 BEND (SEWER HUB x SEWER SPIGOT)</b>			
NV603	3" x 3" 45° STREET ELBOW	30	\$ 18.15
NV604	4" x 4" 45° STREET ELBOW	60	\$ 20.11
NV606	6" x 6" 45° STREET ELBOW	18	\$ 74.57



MODEL #	DESCRIPTION (SIZE)	MASTER CARTON QTY.	LIST PRICE
<b>22 1/2° 1/16 BEND (SEWER HUB x SEWER HUB)</b>			
NV703	3" x 3" 22 1/2° ELBOW	25	\$ 15.76
NV704	4" x 4" 22 1/2° ELBOW	30	\$ 16.30
NV706	6" x 6" 22 1/2° ELBOW	20	\$ 71.20
NV708	8" x 8" 22 1/2° ELBOW	8	\$ 350.22

## PVC SEWER & DRAIN FITTINGS

- White Solvent Weld SDR35
- Meets or exceeds ASTM D3034 and D2729



MODEL #	DESCRIPTION (SIZE)	MASTER CARTON QTY.	LIST PRICE
<b>22 1/2° STREET 1/16 BEND (SEWER HUB x SEWER SPIGOT)</b>			
NV714	4" x 4" 22 1/2° STREET ELBOW	30	\$ 20.11



MODEL #	DESCRIPTION (SIZE)	MASTER CARTON QTY.	LIST PRICE
<b>TEES (SEWER HUB x SEWER HUB x SEWER HUB)</b>			
NV803	3" x 3" x 3" TEE	30	\$ 14.13
NV804	4" x 4" x 4" TEE	30	\$ 19.57
NV806	6" x 6" x 6" TEE	8	\$ 81.09
NV8064	6" x 6" x 4" TEE	5	\$ 80.87
NV808	8" x 8" x 8" TEE	2	\$ 652.17



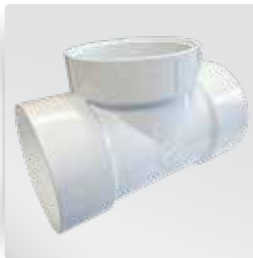
MODEL #	DESCRIPTION (SIZE)	MASTER CARTON QTY.	LIST PRICE
<b>45° WYES (SEWER HUB x SEWER HUB)</b>			
NV903	3" x 3" 45° WYE	25	\$ 26.52
NV904	4" x 4" 45° WYE	24	\$ 27.07
NV906	6" x 6" 45° WYE	6	\$ 114.67
NV9064	6" x 4" 45° WYE	8	\$ 100.00
NV908	8" x 8" 45° WYE	16 / Crate	\$ 754.78
NV9084	8" x 4" 45° WYE	31 / Crate	\$ 425.11
NV9086	8" x 6" 45° WYE	4	\$ 507.28

## PVC SEWER & DRAIN FITTINGS

- White Solvent Weld SDR35
- Meets or exceeds ASTM D3034 and D2729



MODEL #	DESCRIPTION (SIZE)	MASTER CARTON QTY.	LIST PRICE
<b>SANITARY TEES (SEWER HUB x SEWER HUB x SEWER HUB)</b>			
NV1103	3" x 3" x 3" SANITARY TEE	24	\$ 30.54
NV1104	4" x 4" x 4" SANITARY TEE	25	\$ 31.30
NV11064	6" x 6" x 4" SANITARY TEE	5	\$ 232.53
NV1106	6" x 6" x 6" SANITARY TEE	6	\$ 219.78



MODEL #	DESCRIPTION (SIZE)	MASTER CARTON QTY.	LIST PRICE
<b>CLEANOUT TEE (SEWER HUB x SEWER HUB x FIP)</b>			
NV8804	4" x 4" x 4" CLEANOUT TEE	30	\$ 51.85



MODEL #	DESCRIPTION (SIZE)	MASTER CARTON QTY.	LIST PRICE
<b>TWO-WAY CLEANOUT TEE (SEWER HUB x SEWER HUB x SEWER HUB)</b>			
NV2204	4" x 4" x 4" TWO-WAY CLEANOUT TEE	10	\$ 55.98



MODEL #	DESCRIPTION (SIZE)	MASTER CARTON QTY.	LIST PRICE
<b>TWO-WAY CLEANOUT TEE (SEWER HUB x DWV x SEWER HUB)</b>			
NV2214	4" x 4" x 4" TWO-WAY CLEANOUT TEE	10	\$ 121.96

## PVC SEWER & DRAIN FITTINGS

- White Solvent Weld SDR35
- Meets or exceeds ASTM D3034 and D2729



MODEL #	DESCRIPTION (SIZE)	MASTER CARTON QTY.	LIST PRICE
<b>CROSS (SEWER HUB x SEWER HUB x SEWER HUB x SEWER HUB)</b>			
NV1304	4" x 4" x 4" x 4" CROSS	24	\$ 57.28



MODEL #	DESCRIPTION (SIZE)	MASTER CARTON QTY.	LIST PRICE
<b>DOWNSPOUT ADAPTERS (DOWNSPOUT x SEWER HUB)</b>			
NV1703	2" x 3" x 3" DOWNSPOUT ADAPTER	50	\$ 14.46
NV1704	2" x 3" x 4" DOWNSPOUT ADAPTER	50	\$ 15.65
NV1705	3" x 4" x 4" DOWNSPOUT ADAPTER	25	\$ 27.83

The first two sizes are dimensions of the Downspout Square, the third size refers to the Sewer Pipe.



MODEL #	DESCRIPTION (SIZE)	MASTER CARTON QTY.	LIST PRICE
<b>OFFSET FLUSH-FIT DOWNSPOUT ADAPTERS (DOWNSPOUT x SEWER HUB)</b>			
NV1714	2" x 3" x 4" OFFSET FLUSH-FIT DOWNSPOUT ADAPTER	25	\$ 13.37
NV1715	3" x 4" x 4" OFFSET FLUSH-FIT DOWNSPOUT ADAPTER	25	\$ 23.59
NV1706	4" x 6" x 6" OFFSET FLUSH-FIT DOWNSPOUT ADAPTER	15	\$ 87.39

The first two sizes are dimensions of the Downspout Square, the third size refers to the Sewer Pipe.

## PVC SEWER & DRAIN FITTINGS

- White Solvent Weld SDR35
- Meets or exceeds ASTM D3034 and D2729



MODEL #	DESCRIPTION (SIZE)	MASTER CARTON QTY.	LIST PRICE
<b>CAPS</b>			
NV1403	3" CAP	30	\$ 6.52
NV1404	4" CAP	30	\$ 8.59
NV1406	6" CAP	24	\$ 31.41
NV1408	8" CAP	10	\$ 202.93

Fits over Spigot End of Sewer Pipe.



MODEL #	DESCRIPTION (SIZE)	MASTER CARTON QTY.	LIST PRICE
<b>DRAIN GRATES</b>			
NV1803	3" DRAIN GRATE	50	\$ 14.78
NV1804	4" DRAIN GRATE	40	\$ 16.09
NV1806	6" DRAIN GRATE	25	\$ 65.11

Drops into the Hub End of Sewer Pipe or Fitting.



MODEL #	DESCRIPTION (SIZE)	MASTER CARTON QTY.	LIST PRICE
<b>FITTING CLEANOUTS (SEWER SPIGOT x FIP)</b>			
NV1903	3" FITTING CLEANOUT	40	\$ 15.65
NV1904	4" FITTING CLEANOUT	20	\$ 15.33
NV1906	6" FITTING CLEANOUT	12	\$ 95.33

## PVC SEWER & DRAIN FITTINGS

- White Solvent Weld SDR35
- Meets or exceeds ASTM D3034 and D2729

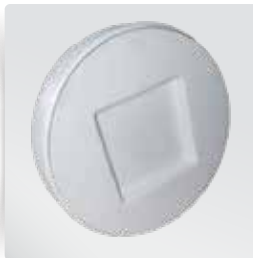


MODEL #	DESCRIPTION (SIZE)	MASTER CARTON QTY.	LIST PRICE
<b>PLUGS (IPS THREADS)</b>			
NV2003	3" PLUG	50	\$ 11.41
NV2004	4" PLUG	50	\$ 11.85
NV2006	6" PLUG	12	\$ 59.46



MODEL #	DESCRIPTION (SIZE)	MASTER CARTON QTY.	LIST PRICE
<b>FITTING CLEANOUT with PLUGS</b>			
NV1924	4" FITTING CLEANOUT WITH PLUG	50	\$ 42.28

NV-1924 consists of one V-1904 Cleanout and one V-2004 Plug.



MODEL #	DESCRIPTION (SIZE)	MASTER CARTON QTY.	LIST PRICE
<b>COUNTERSUNK PLUGS</b>			
NV2014	4" COUNTERSUNK PLUG	48	\$ 14.46
NV2016	6" COUNTERUNK PLUG	12	\$ 56.74



MODEL #	DESCRIPTION (SIZE)	MASTER CARTON QTY.	LIST PRICE
<b>ADAPTER COUPLINGS (SEWER HUB x DWV HUB)</b>			
NV2043	4" x 3" ADAPTER COUPLING	40	\$ 17.28
NV2044	4" x 4" ADAPTER COUPLING	25	\$ 24.89
NV2046T	6" x 4" ADAPTER COUPLING - TAPERED	15	\$ 67.07
NV2066	6" x 6" ADAPTER COUPLING	12	\$ 85.54

TAPERED  
NV2046T



Adapter fits over Spigot End of the Sewer Pipe and allows for the transition to DWV Pipe.



## PVC SEWER & DRAIN FITTINGS

- White Solvent Weld SDR35
- Meets or exceeds ASTM D3034 and D2729



MODEL #	DESCRIPTION (SIZE)	MASTER CARTON QTY.	LIST PRICE
<b>DWV ADAPTER SLEEVES (DWV SPIGOT x SEWER HUB)</b>			
NV3033	3" x 3" DWV ADAPTER SLEEVE	25	\$ 20.54
NV3044	4" x 4" DWV ADAPTER SLEEVE	25	\$ 18.59
NV3066	6" x 6" DWV ADAPTER SLEEVE	10	\$ 83.65

Adapter fits into DWV Hub and allows for transition to Sewer Pipe.



MODEL #	DESCRIPTION (SIZE)	MASTER CARTON QTY.	LIST PRICE
<b>REDUCER SLEEVES (SEWER SPIGOT x DWV HUB)</b>			
NV1031	3" x 1-1/2" REDUCER SLEEVE	25	\$ 21.96
NV1041	4" x 1-1/2" REDUCER SLEEVE	25	\$ 33.48
NV1042	4" x 2" REDUCER SLEEVE	25	\$ 33.91

Adapter fits into Sewer Hub and allows for transition to DWV Pipe.



MODEL #	DESCRIPTION (SIZE)	MASTER CARTON QTY.	LIST PRICE
<b>THREADED BUSHING (SEWER SPIGOT x FIP)</b>			
NV2041	4" x 1-1/2" THREADED BUSHING (SEWER SPIGOT x FIP)	25	\$ 33.04



MODEL #	DESCRIPTION (SIZE)	MASTER CARTON QTY.	LIST PRICE
<b>EXTENDED BUSHINGS (SEWER SPIGOT x SEWER HUB)</b>			
NV2064	6" x 4" EXTENDED BUSHING	24	\$ 46.52
NV2084	8" x 4" EXTENDED BUSHING	8	\$ 291.09
NV2086	8" x 6" EXTENDED BUSHING	8	\$ 297.07

Adapter fits into Sewer Hub and allows for connection to Sewer Pipe.



## PVC SEWER & DRAIN FITTINGS

- White Solvent Weld SDR35
- Meets or exceeds ASTM D3034 and D2729



MODEL #	DESCRIPTION (SIZE)	MASTER CARTON QTY.	LIST PRICE
<b>FLUSH BUSHINGS (SEWER SPIGOT x SEWER HUB)</b>			
NV1143	4" x 3" FLUSH BUSHING	25	\$ 60.65



MODEL #	DESCRIPTION (SIZE)	MASTER CARTON QTY.	LIST PRICE
<b>ECCENTRIC BUSHINGS (SEWER SPIGOT x SEWER HUB)</b>			
NV2164	6" x 4" ECCENTRIC BUSHING	15	\$ 57.17

Adapter fits into Sewer Hub and allows for connection to Sewer Pipe.



MODEL #	DESCRIPTION (SIZE)	MASTER CARTON QTY.	LIST PRICE
<b>ADAPTER BUSHINGS (SEWER SPIGOT x DWV HUB)</b>			
P1202	3" x 1-1/2" ADAPTER BUSHING	18	\$ 44.89
P1203	3" x 2" ADAPTER BUSHING	50	\$ 60.11
NV2644	4" x 4" ADAPTER BUSHING	24	\$ 75.86
P1204	4" x 1-1/2" ADAPTER BUSHING	8	\$ 72.72
P1205	4" x 2" ADAPTER BUSHING	25	\$ 76.20
NV2664	6" x 4" ADAPTER BUSHING - EXTENDED	12	\$ 81.96
NV2666	6" x 6" ADAPTER BUSHING	12	\$ 95.88

EXTENDED  
NV2664

Adapter fits into Sewer Hub and allows for transition to DWV Pipe.



MODEL #	DESCRIPTION (SIZE)	MASTER CARTON QTY.	LIST PRICE
<b>CORRUGATED ADAPTER</b>			
NV44	4" x 4" PVC CORRUGATED ADAPTER	60	\$ 15.43

## SINGLE WALL CORRUGATED FITTINGS

- Black HDPE
- Meets or exceeds ASTM F405



MODEL #	DESCRIPTION (SIZE)	MASTER CARTON QTY.	LIST PRICE
<b>HDPE CORRUGATED EXTERNAL SNAP COUPLINGS</b>			
NC103	3" HDPE CORRUGATED EXTERNAL SNAP COUPLING	24	\$ 8.48
NC104	4" HDPE CORRUGATED EXTERNAL SNAP COUPLING	20	\$ 8.48
NC106	6" HDPE CORRUGATED EXTERNAL SNAP COUPLING	8	\$ 19.78



MODEL #	DESCRIPTION (SIZE)	MASTER CARTON QTY.	LIST PRICE
<b>HDPE CORRUGATED INTERNAL SNAP COUPLINGS</b>			
NC203	3" HDPE CORRUGATED INTERNAL SNAP COUPLING	30	\$ 10.76
NC204	4" HDPE CORRUGATED INTERNAL SNAP COUPLING	24	\$ 11.09
NC206	6" HDPE CORRUGATED INTERNAL SNAP COUPLING	8	\$ 22.17



MODEL #	DESCRIPTION (SIZE)	MASTER CARTON QTY.	LIST PRICE
<b>HDPE CORRUGATED REDUCER COUPLINGS - OFFSET</b>			
NC1043	4" x 3" HDPE CORRUGATED REDUCER COUPLING - OFFSET	20	\$ 14.13
NC1064	6" x 4" HDPE CORRUGATED REDUCER COUPLING - OFFSET	8	\$ 22.50



MODEL #	DESCRIPTION (SIZE)	MASTER CARTON QTY.	LIST PRICE
<b>HDPE CORRUGATED TO RIGID ADAPTERS</b>			
NC44	4" x 4" HDPE CORRUGATED TO RIGID ADAPTER	24	\$ 9.78
NC66	6" x 6" HDPE CORRUGATED TO RIGID ADAPTER	12	\$ 23.04

Corrugated Hub x Rigid SPG & Insert adapts corrugated tube to rigid pipe or fitting.

## SINGLE WALL CORRUGATED FITTINGS

- Black HDPE
- Meets or exceeds ASTM F405



MODEL #	DESCRIPTION (SIZE)	MASTER CARTON QTY.	LIST PRICE
<b>HDPE CORRUGATED 90° 1/4 BEND</b>			
NC303	3" HDPE CORRUGATED ELBOW	15	\$ 24.02
NC304	4" HDPE CORRUGATED ELBOW	12	\$ 29.02
NC306	6" HDPE CORRUGATED ELBOW	4	\$ 46.09



MODEL #	DESCRIPTION (SIZE)	MASTER CARTON QTY.	LIST PRICE
<b>HDPE CORRUGATED STRAIGHT TEES</b>			
NC803	3" HDPE CORRUGATED STRAIGHT TEE	12	\$ 18.59
NC804	4" HDPE CORRUGATED STRAIGHT TEE	12	\$ 23.37
NC806	6" HDPE CORRUGATED STRAIGHT TEE	4	\$ 51.85



MODEL #	DESCRIPTION (SIZE)	MASTER CARTON QTY.	LIST PRICE
<b>HDPE REDUCING TEE</b>			
NC8064	6" x 4" HDPE CORRUGATED REDUCING TEE	3	\$ 53.37

Cut off socket(s) to make 5" or 6" socket.



MODEL #	DESCRIPTION (SIZE)	MASTER CARTON QTY.	LIST PRICE
<b>HDPE CORRUGATED BLIND TEES</b>			
NC814	4" HDPE CORRUGATED BLIND TEE	10	\$ 35.00
NC816	6" HDPE CORRUGATED BLIND TEE	3	\$ 51.85

Serves as a 6" 90° elbow. Cut off 6" cap to make H x H x H tee.



## SINGLE WALL CORRUGATED FITTINGS

- Black HDPE
- Meets or exceeds ASTM F405

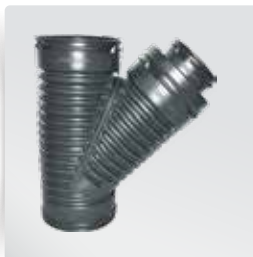


MODEL #	DESCRIPTION (SIZE)	MASTER CARTON QTY.	LIST PRICE
<b>HDPE CORRUGATED REDUCING BLIND TEE</b>			
NC8164	6" x 4" HDPE CORRUGATED REDUCING BLIND TEE	3	\$ 76.20

Serves as a 6" 90° elbow. Socket(s) to make 5" or 6" socket.  
Cut off 6" cap to make H x H x H tee.



MODEL #	DESCRIPTION (SIZE)	MASTER CARTON QTY.	LIST PRICE
<b>HDPE CORRUGATED WYES</b>			
NC903	3" HDPE CORRUGATED WYE	10	\$ 26.96
NC904	4" HDPE CORRUGATED WYE	8	\$ 39.57
NC906	6" HDPE CORRUGATED WYE	4	\$ 60.54



MODEL #	DESCRIPTION (SIZE)	MASTER CARTON QTY.	LIST PRICE
<b>HDPE CORRUGATED REDUCING WYE</b>			
NC9064	6" x 4" HDPE CORRUGATED REDUCING WYE	4	\$ 62.39



MODEL #	DESCRIPTION (SIZE)	MASTER CARTON QTY.	LIST PRICE
<b>HDPE CORRUGATED CAPS</b>			
NC1403	3" HDPE CORRUGATED CAP	20	\$ 7.28
NC1404	4" HDPE CORRUGATED CAP	30	\$ 14.57
NC1406	6" HDPE CORRUGATED CAP	10	\$ 27.72

## SINGLE WALL CORRUGATED FITTINGS

- Black HDPE
- Meets or exceeds ASTM F405



MODEL #	DESCRIPTION (SIZE)	MASTER CARTON QTY.	LIST PRICE
<b>HDPE CORRUGATED DOWNSPOUT ADAPTERS</b>			
NC1703	2" x 3" x 3" HDPE CORRUGATED DOWNSPOUT ADAPTER	15	\$ 14.24
NC1704	2" x 3" x 4" HDPE CORRUGATED DOWNSPOUT ADAPTER	18	\$ 19.24
NC1705	3" x 4" x 4" HDPE CORRUGATED DOWNSPOUT ADAPTER	15	\$ 19.24
NC1706	4" x 6" x 6" HDPE CORRUGATED DOWNSPOUT ADAPTER	2	\$ 62.39

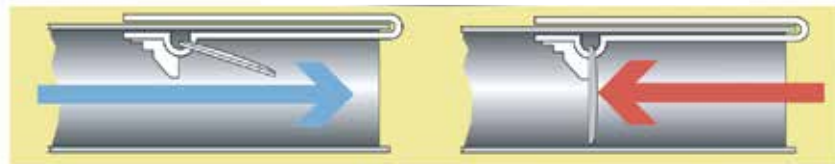


MODEL #	DESCRIPTION (SIZE)	MASTER CARTON QTY.	LIST PRICE
<b>NO CRITTERS DRAIN PIPE GUARD™</b>			
NDG04	4" NO-CRITTERS DRAIN PIPE GUARD™	EACH	\$ 21.74
NDG06	6" NO-CRITTERS DRAIN PIPE GUARD™	EACH	\$ 27.17



Fits Sewer & Drain Pipe,  
Corrugated Pipe,  
DWV & SCH 40 Pipe

Keeps Pests And  
Debris From  
Clogging Pipes



The "ONE WAY" Drain Guard swings open to allow free flow of water.

The "ONE WAY" Design prevents guard from swinging in opposite direction.



Privately Owned for over 60 Years

All products **Made in the USA**

Maintains the **largest inventory of Raw Materials** in the Industry