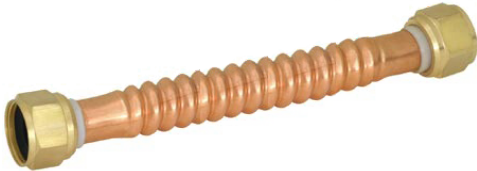


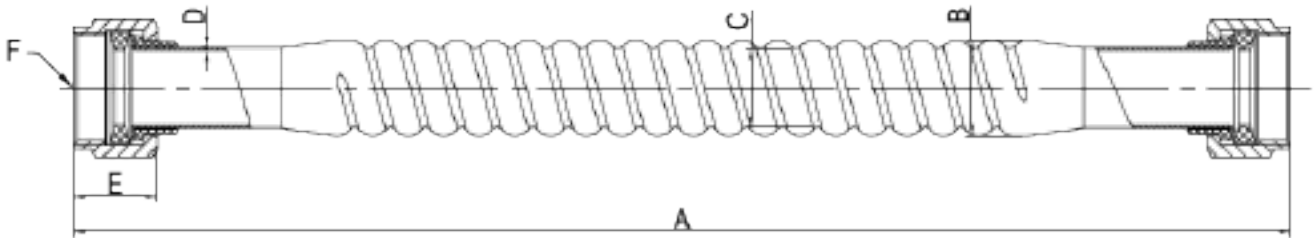
Copper Corrugated Water Heater Connectors

Features and Benefits

- Copper
- Nitrile Rubber Washer
- External Dielectric Sleeve
- Brass Nuts
- 3/4" FIP x 3/4" FIP
- Individually Tagged and barcoded
- Lead Free
- Conforms to ASME A112.18.6
- Conforms to CSA B125.6



ITEM#	DESCRIPTION	LENGTH	INNER CASE QTY	MASTER CASE QTY
HPCWHCFIP18	3/4" FIP X 3/4" FIP	18"	1	25



A	18"
B	0.875"
C	0.728"
D	0.0256"
E	0.77"
F	0.75"

*Lead Free refers to the wetted surface of pipe, fittings and fixtures in potable water systems that have a weighted average lead content $\leq 0.25\%$ per the Safe Drinking Water Act (Sec. 1417) ammended 1-4-2011 and other equivalent state regulations.

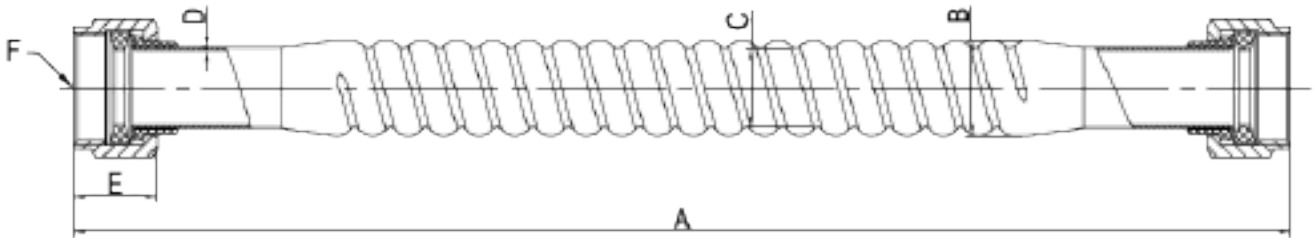
Copper Corrugated Water Heater Connectors

Features and Benefits

- Copper
- Nitrile Rubber Washer
- External Dielectric Sleeve
- Brass Nuts
- 3/4" FIP x 3/4" FIP
- Individually Tagged and barcoded
- Lead Free
- Conforms to ASME A112.18.6
- Conforms to CSA B125.6



ITEM#	DESCRIPTION	LENGTH	INNER CASE QTY	MASTER CASE QTY
HPCWHCFIP24	3/4" FIP X 3/4" FIP	24"	1	25



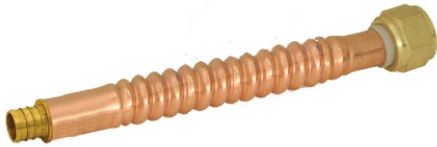
A	24"
B	0.875"
C	0.728"
D	0.0256"
E	0.77"
F	0.75"

*Lead Free refers to the wetted surface of pipe, fittings and fixtures in potable water systems that have a weighted average lead content $\leq 0.25\%$ per the Safe Drinking Water Act (Sec. 1417) ammended 1-4-2011 and other equivalent state regulations.

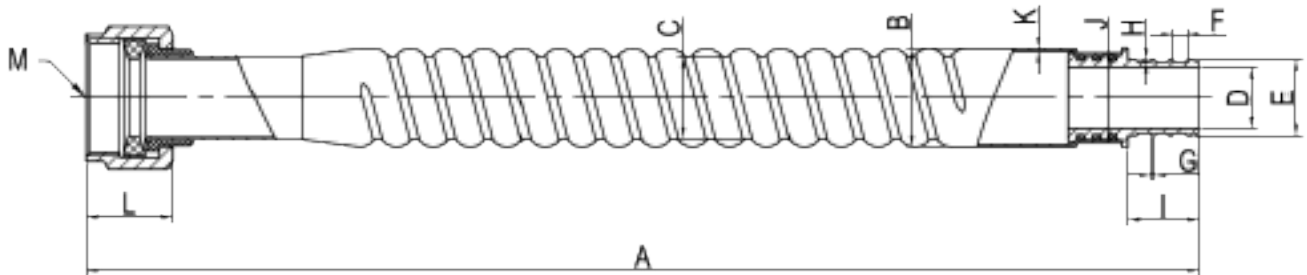
Copper Corrugated Water Heater Connectors

Features and Benefits

- Copper
- Nitrile Rubber Washer
- External Dielectric Sleeve
- Brass Nuts
- 3/4" FIP x 3/4" PEX
- Individually Tagged and barcoded
- Lead Free
- Conforms to ASME A112.18.6
- Conforms to CSA B125.6



ITEM#	DESCRIPTION	LENGTH	INNER CASE QTY	MASTER CASE QTY
HPCWHCPEX18	3/4" FIP X 3/4" PEX	18"	1	25



A	18"
B	0.875"
C	0.728"
D	0.53"
E	0.667"
F	0.12"
G	0.03"
H	0.013"
I	0.625"
J	0.80"
K	0.0256"
L	0.77"
M	0.75"

*Lead Free refers to the wetted surface of pipe, fittings and fixtures in potable water systems that have a weighted average lead content $\leq 0.25\%$ per the Safe Drinking Water Act (Sec. 1417) ammended 1-4-2011 and other equivalent state regulations.

HYDRAPRO INC.

Phone: 877-813-2333; Fax 877-249-8435

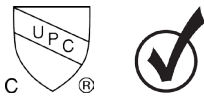
Atlanta - Boston - Dallas - Deerfield Beach - Houston - Philadelphia

www.hydrapro.biz

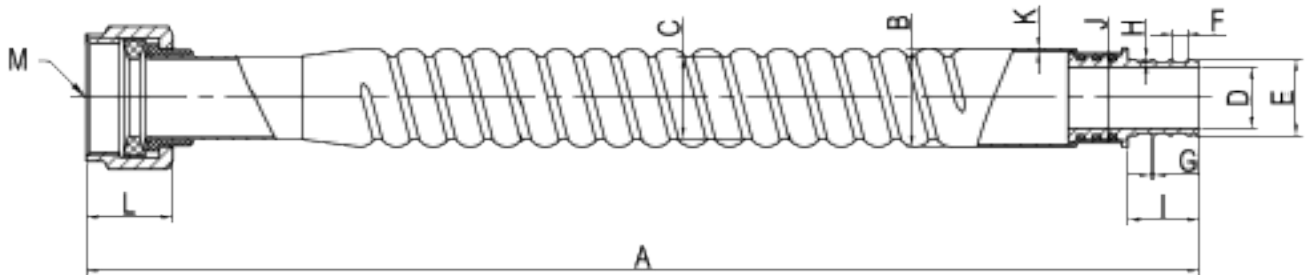
Copper Corrugated Water Heater Connectors

Features and Benefits

- Copper
- Nitrile Rubber Washer
- External Dielectric Sleeve
- Brass Nuts
- 3/4" FIP x 3/4" PEX
- Individually Tagged and barcoded
- Lead Free
- Conforms to ASME A112.18.6
- Conforms to CSA B125.6



ITEM#	DESCRIPTION	LENGTH	INNER CASE QTY	MASTER CASE QTY
HPCWHCPEX24	3/4" FIP X 3/4" PEX	24"	1	25



A	24"
B	0.875"
C	0.728"
D	0.53"
E	0.667"
F	0.12"
G	0.03"
H	0.013"
I	0.625"
J	0.80"
K	0.0256"
L	0.77"
M	0.75"

*Lead Free refers to the wetted surface of pipe, fittings and fixtures in potable water systems that have a weighted average lead content $\leq 0.25\%$ per the Safe Drinking Water Act (Sec. 1417) amended 1-4-2011 and other equivalent state regulations.

HYDRAPRO INC.

Phone: 877-813-2333; Fax 877-249-8435

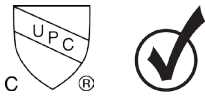
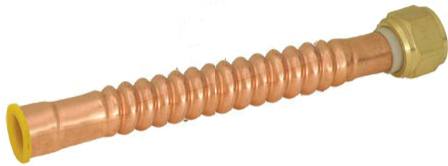
Atlanta - Boston - Dallas - Deerfield Beach - Houston - Philadelphia

www.hydrapro.biz

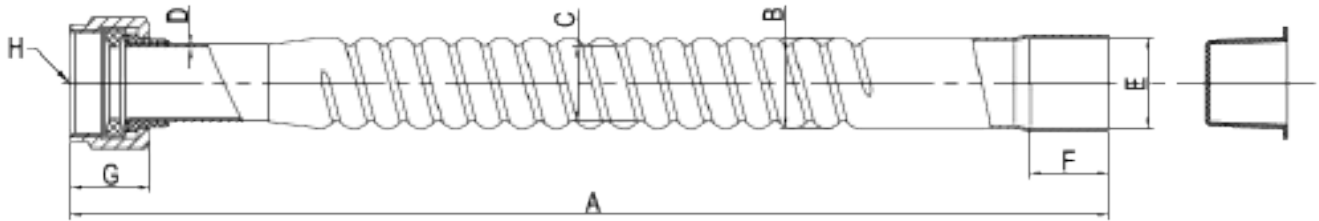
Copper Corrugated Water Heater Connectors

Features and Benefits

- Copper
- Nitrile Rubber Washer
- External Dielectric Sleeve
- Brass Nuts
- 3/4" FIP x 3/4" Female Sweat
- Individually Tagged and barcoded
- Lead Free
- Conforms to ASME A112.18.6
- Conforms to CSA B125.6



ITEM#	DESCRIPTION	LENGTH	INNER CASE QTY	MASTER CASE QTY
HPCWHCSWT18	3/4" FIP X 3/4" Female Sweat	18"	1	25



A	18"
B	0.875"
C	0.728"
D	0.0256"
E	0.877"
F	0.75"
G	0.77"
H	0.75"

*Lead Free refers to the wetted surface of pipe, fittings and fixtures in potable water systems that have a weighted average lead content $\leq 0.25\%$ per the Safe Drinking Water Act (Sec. 1417) ammended 1-4-2011 and other equivalent state regulations.

HYDRAPRO INC.

Phone: 877-813-2333; Fax 877-249-8435

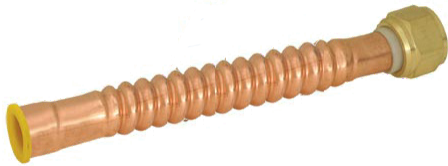
Atlanta - Boston - Dallas - Deerfield Beach - Houston - Philadelphia

www.hydrapro.biz

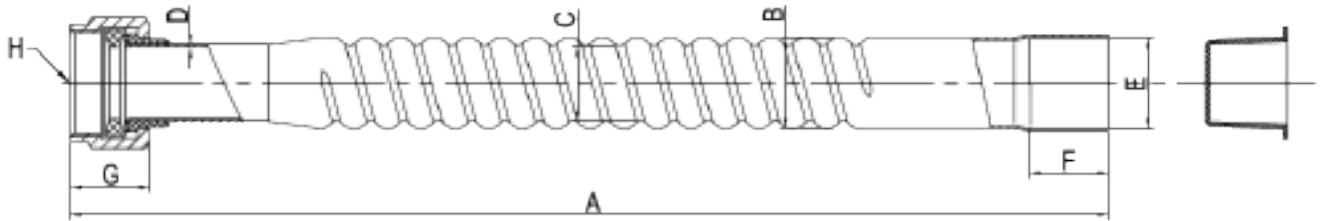
Copper Corrugated Water Heater Connectors

Features and Benefits

- Copper
- Nitrile Rubber Washer
- External Dielectric Sleeve
- Brass Nuts
- 3/4" FIP x 3/4" Female Sweat
- Individually Tagged and barcoded
- Lead Free
- Conforms to ASME A112.18.6
- Conforms to CSA B125.6



ITEM#	DESCRIPTION	LENGTH	INNER CASE QTY	MASTER CASE QTY
HPCWHCSWT24	3/4" FIP X 3/4" Female Sweat	24"	1	25



A	24"
B	0.875"
C	0.728"
D	0.0256"
E	0.877"
F	0.75"
G	0.77"
H	0.75"

*Lead Free refers to the wetted surface of pipe, fittings and fixtures in potable water systems that have a weighted average lead content $\leq 0.25\%$ per the Safe Drinking Water Act (Sec. 1417) ammended 1-4-2011 and other equivalent state regulations.

HYDRAPRO INC.

Phone: 877-813-2333; Fax 877-249-8435

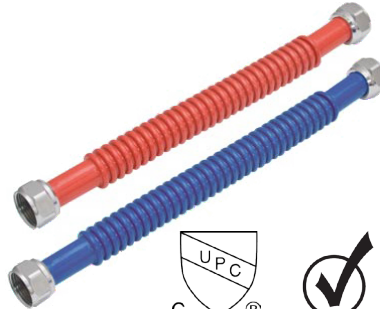
Atlanta - Boston - Dallas - Deerfield Beach - Houston - Philadelphia

www.hydrapro.biz

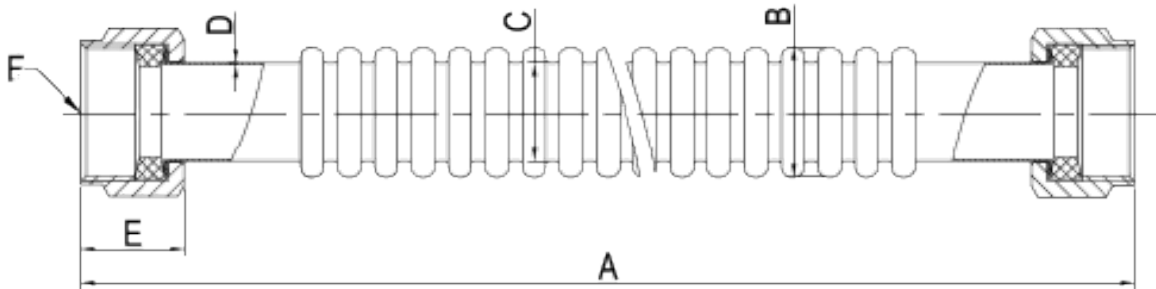
Stainless Steel Corrugated Water Heater Connectors

Features and Benefits

- Stainless Steel
- Nitrile Rubber Washer
- Nickel Plated Brass Nuts
- 3/4" FIP x 3/4" FIP
- Lead Free
- Conforms to ASME A112.18.6
- Conforms to CSA B125.6



ITEM #	DESCRIPTION	LENGTH	INNER	MASTER
			CASE	CASE
QTY				
INDIVIDUALLY TAGGED AND BARCODED				
HPSSWHCFIP18	3/4" FIP X 3/4" FIP	18"	1	25
EPOXY COATED BAGGED PAIRED AND BARCODED (RED AND BLUE)				
HPSSWHCFIP18PR	3/4" FIP X 3/4" FIP (PAIR)	18"	1	12



A	18"
B	0.984"
C	0.748"
D	0.011"
E	0.77"
F	0.75"

*Lead Free refers to the wetted surface of pipe, fittings and fixtures in potable water systems that have a weighted average lead content $\leq 0.25\%$ per the Safe Drinking Water Act (Sec. 1417) amended 1-4-2011 and other equivalent state regulations.

HYDRAPRO INC.

Phone: 877-813-2333; Fax 877-249-8435

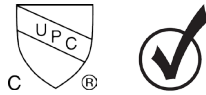
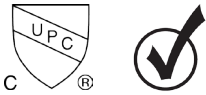
Atlanta - Boston - Dallas - Deerfield Beach - Houston - Philadelphia

www.hydrapro.biz

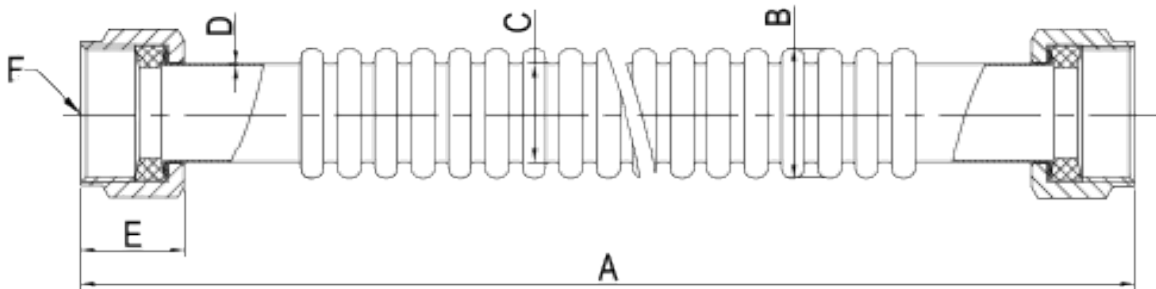
Stainless Steel Corrugated Water Heater Connectors

Features and Benefits

- Stainless Steel
- Nitrile Rubber Washer
- Nickel Plated Brass Nuts
- 3/4" FIP x 3/4" FIP
- Lead Free



ITEM #	DESCRIPTION	LENGTH	INNER CASE QTY	MASTER CASE QTY
INDIVIDUALLY TAGGED AND BARCODED				
HPSSWHCFIP24	3/4" FIP X 3/4" FIP	24"	1	25
EPOXY COATED BAGGED PAIRED AND BARCODED (RED AND BLUE)				
HPSSWHCFIP24PR	3/4" FIP X 3/4" FIP (PAIR)	24"	1	12



A	24"
B	0.984"
C	0.748"
D	0.011"
E	0.77"
F	0.75"

*Lead Free refers to the wetted surface of pipe, fittings and fixtures in potable water systems that have a weighted average lead content $\leq 0.25\%$ per the Safe Drinking Water Act (Sec. 1417) ammended 1-4-2011 and other equivalent state regulations.

HYDRAPRO INC.

Phone: 877-813-2333; Fax 877-249-8435

Atlanta - Boston - Dallas - Deerfield Beach - Houston - Philadelphia

www.hydrapro.biz