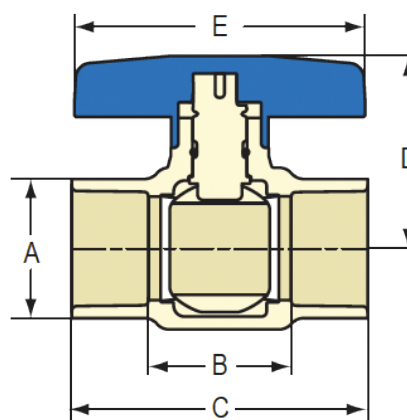


## CPVC Ball Valves

- CPVC
- Full port
- Max working pressure 100 PSI @ 180° F
- Blue handle
- Lead Free



ITEM #	DESCRIPTION	A	B	C	D	E	APPROX. WT. (LBS)
STDSW4712	1/2"	13/16	1	2-1/32	1-9/32	2-1/32	0.09
STDSW4734	3/4"	1-3/32	1-1/4	2-23/32	1-23/32	2-23/32	0.15
STDSW471	1"	1-3/8	1-9/16	3-3/8	2-5/16	3-1/2	0.27
STDSW47114	1-1/4"	1-21/32	1-9/16	3-13/16	2-3/8	3-1/2	0.47
STDSW47112	1-1/2"	1-31/32	1-15/16	4-9/16	2-13/16	3-3/4	0.53
STDSW472	2"	2-9/16	2-3/8	5-13/16	3-5/32	4-9/32	1.38

\*Lead Free refers to the wetted surface of pipe, fittings and fixtures in potable water systems that have a weighted average lead content  $\leq 0.25\%$  per the Safe Drinking Water Act (Sec. 1417) ammended 1-4-2011 and other equivalent state regulations.

**HYDRAPRO INC.**

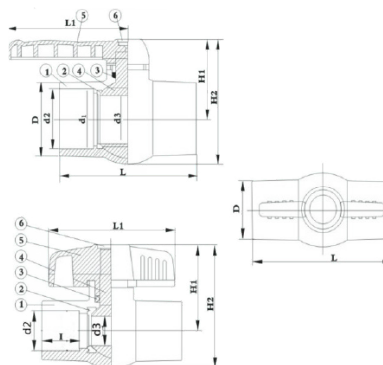
Phone: 877-813-2333; Fax 877-249-8435

**Atlanta - Boston - Dallas - Pompano Beach - Houston - Philadelphia**

[www.hydrapro.biz](http://www.hydrapro.biz)

## PVC BALL VALVES

- Sch. 40
- EPDM Seats and O-rings
- Impact resistant
- Blue handle
- Working pressure 150 psi
- Valves ARE NOT NSF approved



### SOLVENT WELD

ITEM #	SIZE	d2	d3	D	L	L1	I	H1	H2
SW4012	1/2" X 1/2"	0.834	0.591	1.181	2.756	2.748	0.740	1.661	2.370
SW4034	3/4" X 3/4"	1.050	0.787	1.421	3.299	3.008	0.969	2.031	2.874
SW401	1" X 1"	1.310	0.984	1.717	3.835	3.543	1.102	2.295	3.331
SW40114	1-1/4" X 1-1/4"	1.660	1.220	2.051	4.205	4.016	1.134	2.465	3.685
SW40112	1-1/2" X 1-1/2"	1.900	1.417	2.283	4.783	4.331	1.276	2.894	4.291
SW402	2" X 2"	2.370	1.772	2.827	5.457	5.157	1.394	3.287	4.980
SW40212	2-1/2" X 2-1/2"	2.870	2.362	3.555	6.969	6.299	1.701	3.898	6.102
SW403	3" X 3"	3.500	2.874	4.252	9.583	6.929	2.717	4.567	7.323
SW404	4" X 4"	4.500	3.268	5.295	11.26	7.047	3.118	5.354	8.740

NO.	PART	MATERIAL	QTY
1	BODY	U-PVC	1
2	SEAT SEAL	TPE	2
3	STEM O-RING	NBR	1
4	BALL	PP	1
5	HANDLE	PP	1
6	CAP	PP	1

**HYDRAPRO INC.**

Phone: 877-813-2333; Fax 877-249-8435

Atlanta - Boston - Dallas - Pompano Beach - Houston - Philadelphia

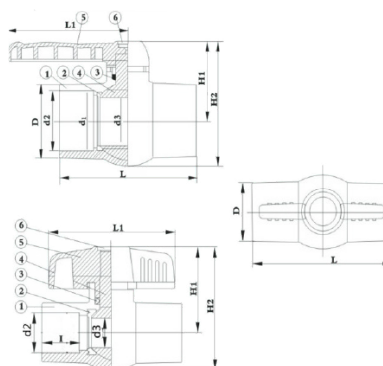
[www.hydrapro.biz](http://www.hydrapro.biz)

## PVC BALL VALVES

- Sch. 40
- EPDM Seats and O-rings
- Impact resistant
- Blue handle
- Working pressure 150 psi
- Valves ARE NOT NSF approved



THREADED



ITEM #	SIZE	d2	d3	D	L	L1	I	H1	H2
THD4034	3/4" X 3/4"	0.551	0.787	1.354	3.299	3.008	0.969	2.031	2.874
THD401	1" X 1"	0.453	0.984	1.665	3.835	3.543	1.102	2.295	3.331
THD402	2" X 2"	0.453	1.772	2.815	5.457	5.157	1.394	3.287	4.980

NO.	PART	MATERIAL	QTY
1	BODY	U-PVC	1
2	SEAT SEAL	TPE	2
3	STEM O-RING	NBR	1
4	BALL	PP	1
5	HANDLE	PP	1
6	CAP	PP	1

HYDRAPRO INC.

Phone: 877-813-2333; Fax 877-249-8435

Atlanta - Boston - Dallas - Deerfield Beach - Houston - Philadelphia

www.hydrapro.biz



# EverTUFF® CTS CPVC HOT & COLD WATER DISTRIBUTION SYSTEM

CTS-2-1014

## Certified Safe Alternative to Metal Plumbing Systems



All conventional metal plumbing systems corrode leaving their corrosive wastes for deposit into the water system. CPVC thermoplastic system components never corrode. Spears® EverTUFF® CTS CPVC system of fittings, pipe, supply stops & valves are Certified lead-free by NSF® International (NSF®) in accordance with ANSI/NSF® 61 and NSF®372 for compliance with all State & Federal Regulations. Approved by national, state and most municipal building codes\* and Listed by ICC to ASTM E84 for Flame & Smoke Characteristics of less than 25/50 for use in return air plenums (See PMG Listing No. PMG-1278 at [www.icc-es-pmg.org](http://www.icc-es-pmg.org)). Spears® CTS CPVC products are ideally suited for hot and cold water distribution systems in residential and commercial structures, as well as recreational vehicles, modular homes and mobile homes.

\*Check state and local codes.

### Full Line of CTS CPVC Fittings, Pipe, Supply Stops & Ball Valves 1/2" Through 2" Plus Supplemental IPS CPVC in 2-1/2" & Up

EverTUFF® CPVC pipe and fitting are available for most any size project using Copper-Tube-Size (CTS) CPVC in sizes 1/2" through 2". Plus, can be used with supplemental Schedule 40 and Schedule 80 CPVC Iron Pipe Size (IPS) for sizes 2-1/2" and larger available for use in multi-story installations where adequate design and installation practices have been utilized.

### Exceptional Corrosion Resistance

Unlike metal systems, CPVC CTS products never rust, scale, or pit, and will provide many years of maintenance-free service and extended system life.

### Energy Savings

Low heat conductivity minimizes heat loss in hot water systems.

### Higher Flow Capacity

Smooth interior walls result in lower pressure loss and higher volume than conventional metal systems.

### Lower System Costs

Lower material costs than metallic systems, combined with lighter weight and ease of installation, can substantially reduce installation cost.

### Suitable for Commercial Hot Water

CTS CPVC products can handle fluids at service temperatures up to 180°F (82°C).

### CTS CPVC 1/4-Turn Angle Supply Stop



Used with plumbing fixtures to terminate and control hot and cold water supply, Angle Supply Stops NSF® Certified to ASTM F 1970 for use in ASTM D 2846 Hot & Cold Water Distribution Systems. All Supply Stops are rated to 100 psi @ 180°F. Available in 1/2" CTS Socket, Spears® patented Special Reinforced (SR) 1/2" FIPT female thread inlets. Choose 1/2" and 3/8" NPT male thread outlets or 1/2" and 3/8" Compression male thread outlets for connection to conventional Female NPT or Female Compression faucet or toilet supply lines with captive seals.

### CTS CPVC Ball Valves



*Residential*

*Commercial*

Spears® EverTUFF® Copper-Tube-Size Ball Valves feature one-piece design that never requires adjustment. EPDM O-ring seal and PTFE Seats enable bubble-tight shut off. Choose Heavy Commercial design manufactured to ASTM F1970 for use in ASTM D 2846 Hot & Cold Water Distribution Systems or Economical Residential design. Rated to 100 psi maximum internal pressure at 180°F and NSF® Certified Lead-Free for use in potable water systems.

**PROGRESSIVE PRODUCTS FROM SPEARS® INNOVATION & TECHNOLOGY**

Visit our web site: [www.spearsmfg.com](http://www.spearsmfg.com)

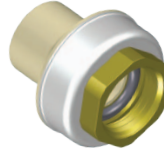
## Spears® EverTUFF® Exclusive Specialty Fittings - All Lead-Free...

### CTS CPVC Push-on Couplings



- Uses **NO Solvent Cement**  
– Permanent Connection
- Excellent for Repairs & Transition to Copper Systems
- NSF® Certified Lead-Free

### Gasket Sealed Brass-Threaded Transition Fittings



- Eliminates Radial Stress
- Requires NO Thread Sealants
- Eliminates Sealant Incompatibility
- NSF® Certified Lead-Free

### Patented Special Reinforced (SR) Plastic Threaded Transition Fittings



- Eliminates Split Threads
- Eliminates Leaks Associated with Over Tightening
- Eliminates MIC, Electrolytic & Soil Chemistry Corrosion
- NSF® Certified Lead-Free

### Stainless Steel Threaded Transition Fittings



- Excellent for Transitions to Metal Systems
- NSF® Certified Lead-Free

### Lead-Free Brass Compression Unions



- NSF® Certified Lead-Free
- Transitions to Copper Tubing and Other Metal Systems

## Spears® EverTUFF®, The Full-Service CTS CPVC Product Line...

### Application

Spears® EverTUFF® Copper-Tube-Size (CTS) products are manufactured from chlorinated polyvinyl chloride (CPVC) for use with SDR-11 piping systems of CTS outside diameter in hot and cold water distribution systems in nominal pipe size 1/2" through 2". CTS CPVC products can be used in conjunction with Spears® supplemental Schedule 40 and Schedule 80 CPVC Iron-Pipe-Size (IPS) pipe and fittings for sizes 2-1/2" through 12" in commercial multi-story installations. Check state and local codes for application and restrictions.

### Working Pressure

Spears® EverTUFF® CTS CPVC fittings, pipe and valves have a continuous working pressure rating of 100 psi at 180°F, unless designated for cold water use only.

### Conformance Standards

Spears® EverTUFF® CTS CPVC fittings conform to ASTM D 2846 Specification for Chlorinated Poly (Vinyl Chloride) (CPVC) Plastic Hot and Cold Water Distribution Systems.

### Product Certification

Spears® EverTUFF® CTS CPVC piping systems are certified by NSF® International (NSF®) to ASTM D 2846 for use in Hot and Cold Water Distribution Systems, to the Uniform Plumbing Code (NSF® U.P.Code) and for use in potable water service. All Spears® EverTUFF® CTS CPVC products are NSF® certified lead-free in accordance with ANSI/NSF® Standard 61 and 372 for compliance with all State & Federal regulation. All Spears® EverTUFF® CTS CPVC pipe and fittings are Listed by ICC to ASTM E84 for flame spread/smoke development of less than 25/50.

### Sample Engineering Specifications

All fittings, pipe, supply stops and valves shall be EverTUFF® Copper-Tube-Size (CTS) constructed from CPVC 4120 with minimum Cell Classification of 23447. All CTS CPVC products shall be produced to applicable requirements of ASTM D 2846 and rated to 100 psi at 180°F, unless specifically designated for cold water service only. All supply stops shall be 1/4 turn angle or straight pattern CTS CPVC with NPT or Compression male thread outlets. All ball valves shall be CTS CPVC sealed unit type with EPDM O-ring and double stop Polypropylene handle in either Commercial or Residential design. All CTS CPVC products shall be certified lead-free for potable water use by NSF® International in accordance with NSF® 61 and NSF® 372. All pipe and fittings shall be Listed by ICC for compliance with ASTM E84 Surface Burning Characteristic with flame spread/smoke development of less than 25/50 for use in return air plenums, as manufactured by Spears® Manufacturing Company.



**SPEARS® MANUFACTURING COMPANY • CORPORATE OFFICE**

15853 Olden St., Sylmar, CA 91342 • PO Box 9203, Sylmar, CA 91392  
(818) 364-1611 • [www.spearsmfg.com](http://www.spearsmfg.com)

